



Greenstone Estates Limited
83 Boundary Road
St John's Wood
London NW8 0RG

Strathmore Court, St Johns Wood, NW8



Located opposite Regents Park and within easy walking distance to Baker Street is this one bedroom apartment comprising 334 sq ft and located on the ground floor of an Art Deco Mansion block.

Strathmore Court would be ideally suited to young professionals or students due to its proximity to the West End, as well as a number of top colleges and universities such as London Business School, University of Westminster and the Royal College of Physicians. All units can benefit from a Westminster parking permit.

Westminster Council Tax Band: H £2,095.70
EPC Rating - D

It is a mandatory requirement for a Sales or Lettings Agent to be part of a redress scheme, we have membership with The Property Ombudsman (a Government-approved redress scheme).

It is a mandatory requirement for a Lettings Agent to be part of a Client Money Protection scheme, we have membership with Property Mark (a Government-approved client money protection provider).

£2,600 Per Calendar Month Subject to contract

Lettings: 020 7625 1000
Sales: 020 7625 7000



www.greenstone.com



www.facebook.com/greenstoneproperty

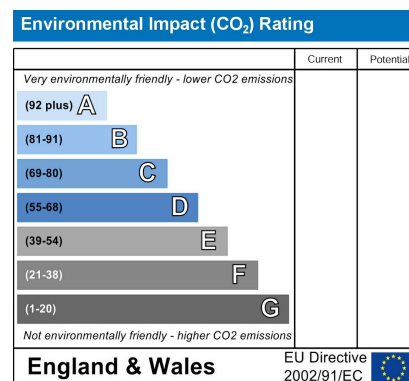
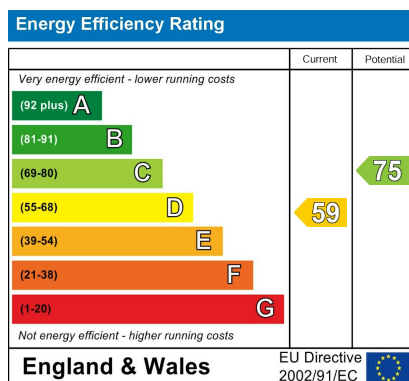


www.twitter.com/lewisgreenstone



www.youtube.com/user/greenstone





Lettings: 020 7625 1000
Sales: 020 7625 7000

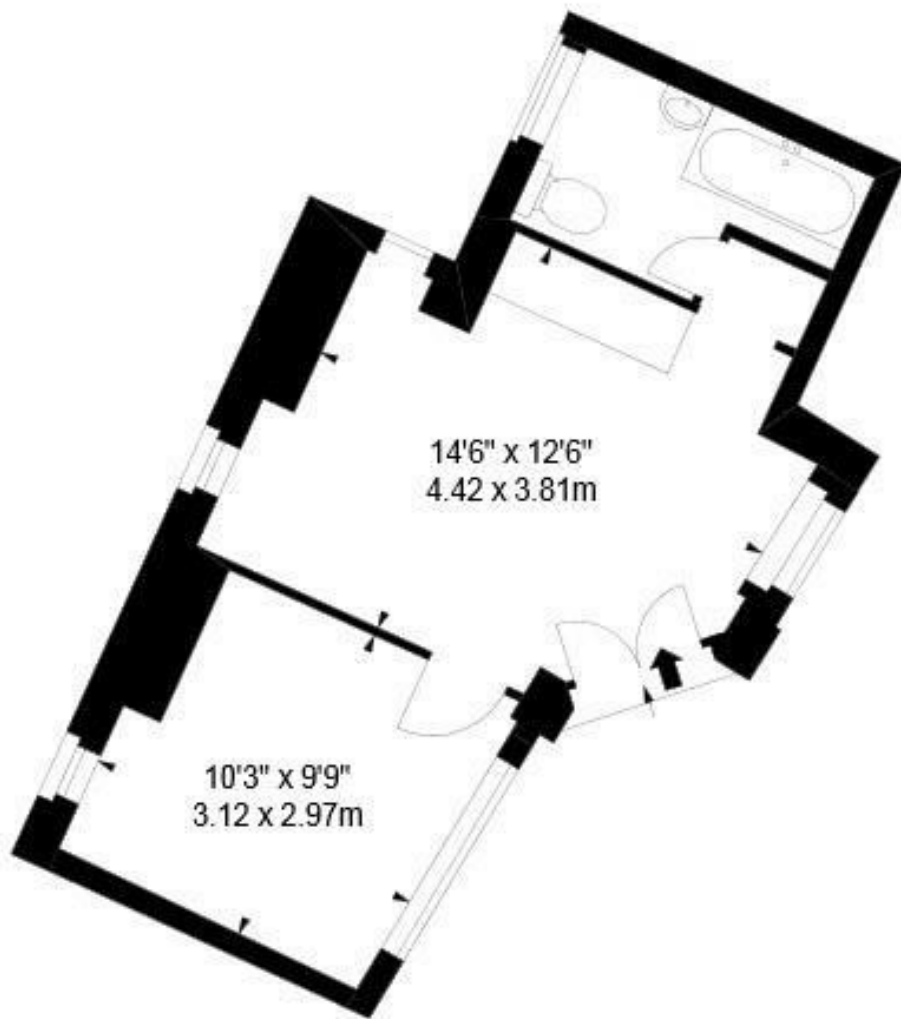
www.greenstone.com

www.facebook.com/greenstoneproperty

www.twitter.com/lewisgreenstone

www.youtube.com/user/greenstone





IMPORTANT NOTICE All of the information is intended only as a guide to a prospective purchaser and does not constitute any part of an offer or contract. Any measurements or distances referred to herein are approximate only. Any information contained herein (whether in the text, plans or photographs) is given in good faith and cannot be relied upon as being a statement or representation of fact. Should you proceed with the purchase of the property, your solicitor must verify these details. We have not carried out a detailed survey nor tested the services, appliances and specific fittings. In accordance with current legislation we would advise you that the measurements on these particulars are imperial. The formula for conversion to metric is as follows:- 1' (one foot) = 30.4cm (centimetres), 1m (one metre) = 3'29 (feet).