



14 Newcroft Road, Calne, SN11 9EG

£1,300 Per Month



- Three bedroom house
- Longer term let preferred
- EPC - D
- Driveway parking & enclosed rear garden
- Pets considered
- Council Tax - B (Wiltshire Council)

Discover Calne: A Historic Wiltshire Town with Scenic Charm and Great Connectivity

Situated in the beautiful North Wiltshire countryside, Calne is a market town that combines rich history with modern-day living. With a sense of community and range of local amenities, Calne is an ideal place to call home.

Local Amenities and Lifestyle

Calne offers a town centre featuring independent shops, cafes, and traditional pubs. There's no shortage of green space, with the popular Castlefields Park and The Recreation Ground offering relaxing outdoor areas for picnics, dog walks and family time. For fitness and leisure, Calne Leisure Centre provides a gym, swimming pool and fitness classes for all ages.

THE PROPERTY

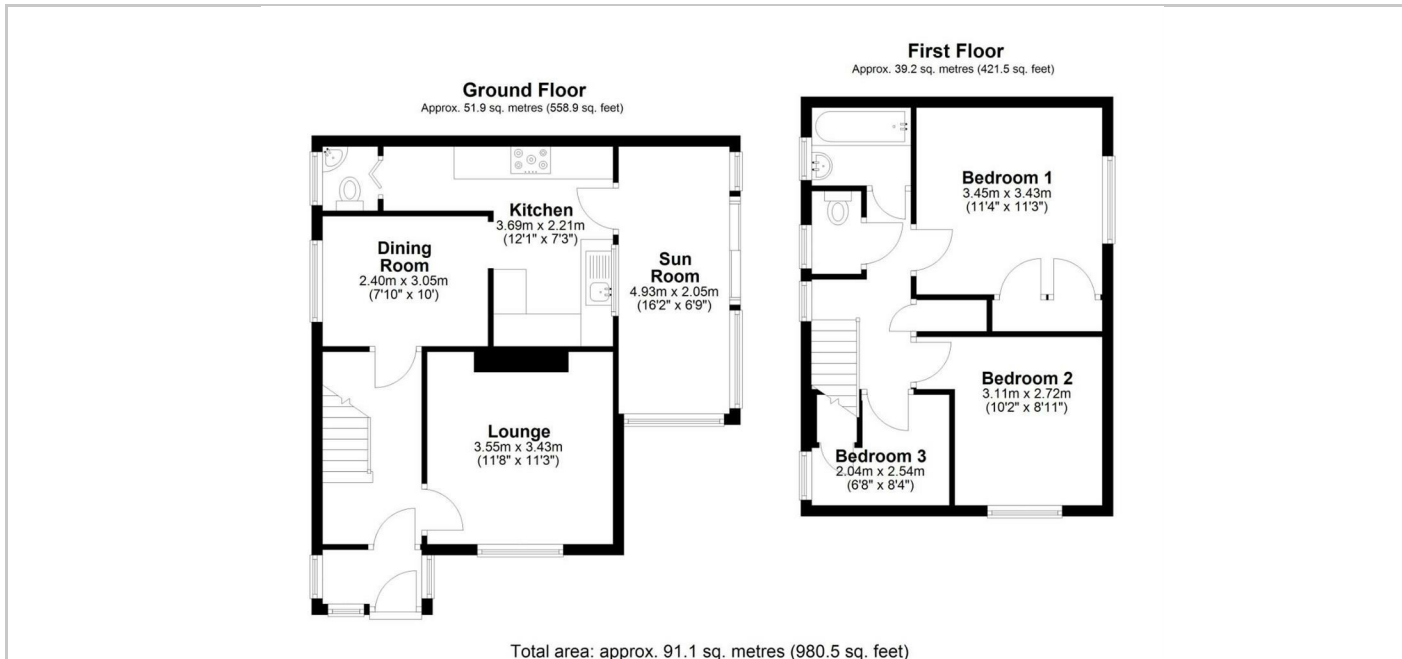
Welcome to 14 Newcroft Road, Calne. A three bedroom end of terrace home available for a longer term let.

The ground floor accommodation comprises entrance porch, entrance hall, lounge, dining room, kitchen, sun room and cloakroom. The first floor accommodation comprises landing with storage cupboard, two double bedrooms, single bedroom, bathroom and separate toilet room.

The property further benefits from driveway parking for multiple vehicles, an enclosed rear garden with patio, lawn, flower beds and shed, gas central heating and double glazing.

The landlord would prefer a longer term let and will consider pets on application.

SITUATION



Directions