

REZIDE



Cobble Close, Barrow Upon Soar,

£96,000 60% Shared

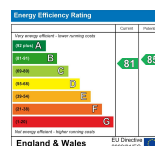
Ownership - 2 Bed - 2 Bath - 1 Rec - 1

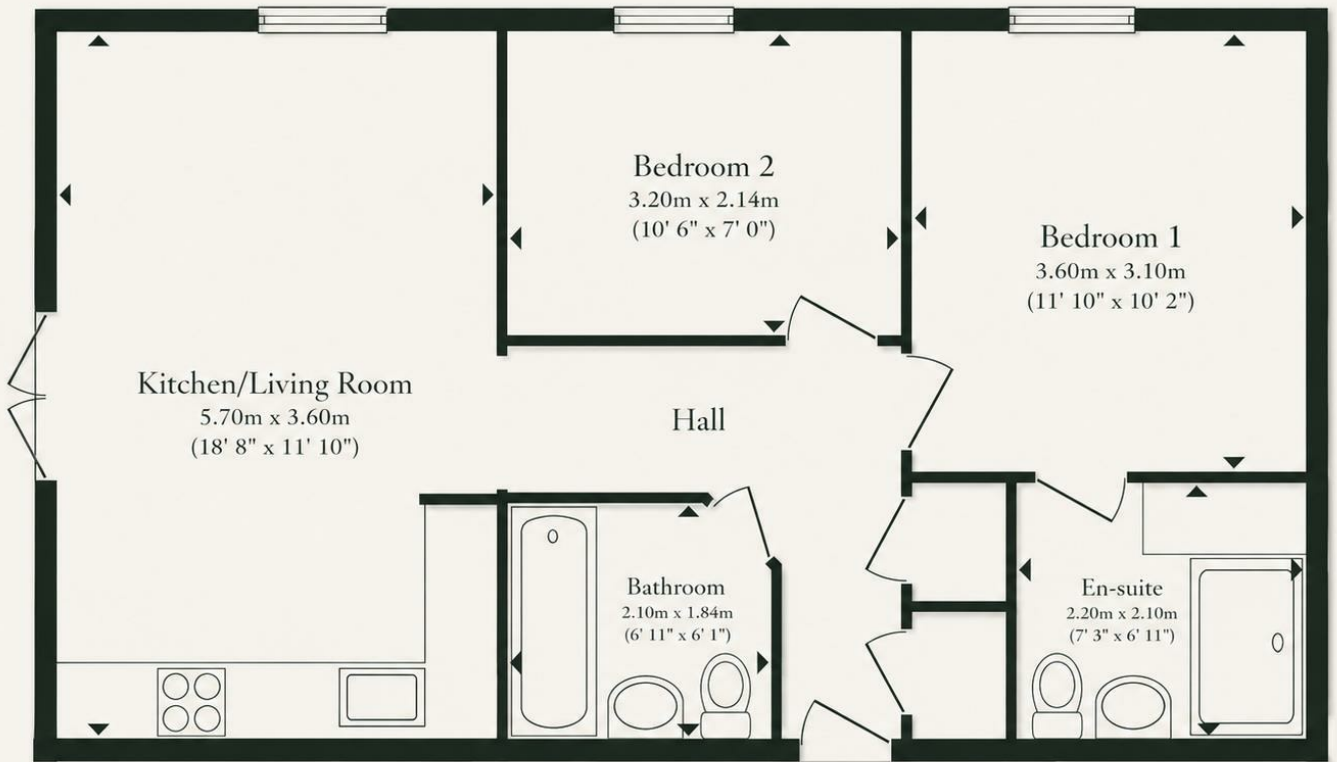
Modern Apartment Living with the Opportunity to Step Onto the Property Ladder. Situated within a popular modern development, this well-presented two bedroom first floor apartment is available on a 60% shared ownership basis, offering an excellent opportunity for first-time buyers or those seeking a stylish, low maintenance home.

- Available on a 60% shared ownership basis
- Two bedroom first floor apartment
- Spacious open plan kitchen, dining and living area
- Juliette balcony
- Principal bedroom with en suite shower room
- Modern family bathroom
- Allocated parking space
- Excellent first home or investment opportunity

Tenure -

Council Tax Band - B





Total floor area 57.6 m² (620 sq.ft.) approx

This floor plan is for illustrative purposes only. It is not drawn to scale. Any measurements, floor areas (including any total floor area), openings and orientation are approximate. No details are guaranteed, they cannot be relied upon for any purpose and they do not form part of any agreement. No liability is taken for any error, omission or misstatement. A party must rely upon its own inspection(s). Powered by www.propertybox.io

REZIDE

01509 274474



info@rezide.group