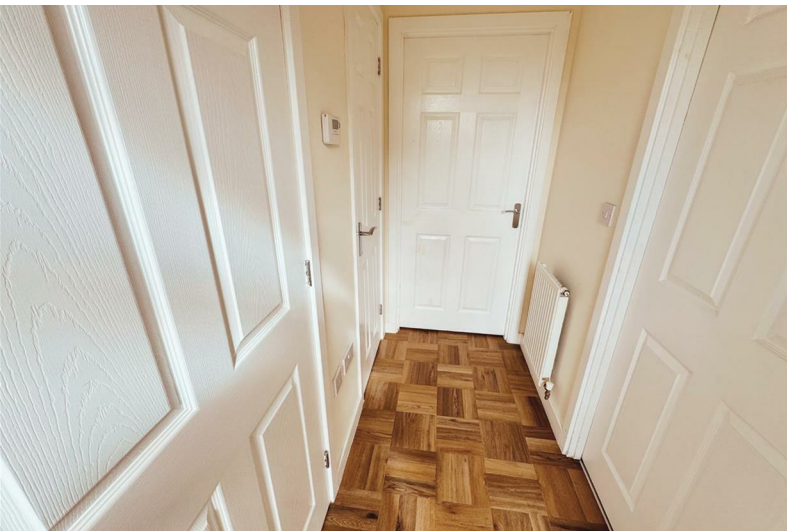




Elton Street

, Corby, NN17 5EN

£1,000 Per month



Elton Street

, Corby, NN17 5EN

£1,000 Per month



Entrance Hall

Entered via a double glazed door, radiator, storage cupboard, doors to:

W.C

Fitted to comprise a two piece suite consisting of a low level pedestal and low level wash hand basin, radiator.

Kitchen

8' 5" x 7' 5" (2.44m 1.52m x 2.13m 1.52m)
Fitted to comprise a range of base and eye level units with a single sink and drainer, gas hob with extractor, electric oven, plumbing for automatic washing machine, space for free standing fridge/freezer, double glazed window to front elevation.

Living Room

14' 8" x 12' 9" (4.27m 2.44m x 3.66m 2.74m)
Double glazed French doors to rear elevation, radiator, multi media point, double glazed window to rear elevation, stairs rising to first floor landing, doors to:

First Floor Landing

Doors to:

Bedroom 1

11' 3" x 10' 4" (3.35m 0.91m x 3.05m 1.22m)
Double glazed window to the rear, radiator, built in double wardrobes.

En-suite

Fitted to comprise a three piece suite consisting of a mains feed shower cubicle, low level pedestal, low level wash hand wash basin, extractor fan, radiator, double glazed window to rear elevation.

Bedroom 2

10' 9" x 7' 8" (3.05m 2.74m x 2.13m 2.44m)
Double glazed window to the front, loft access, radiator.

Bathroom

7'0 x 6'5 (2.13m x 1.96m)
Fitted to comprise a three piece suite consisting of a panel bath with mixer tap and shower attachment, pedestal wash hand basin, low level WC, tiled splash back, extractor fan, vinyl flooring, radiator, double glazed Velux window.

Outside

Front: Consisting of a low maintenance planting area.

Rear: A patio area leads onto a low maintenance artificial laid lawn and is enclosed by timber fencing to all sides, gated access to the rear.



Road Map



Hybrid Map



Terrain Map



Floor Plan

Ground Floor

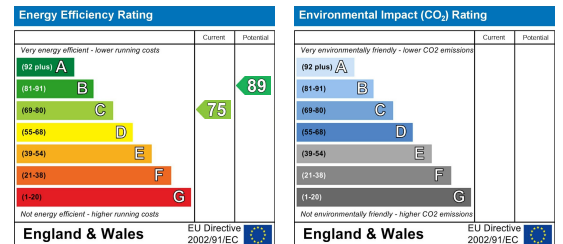
First Floor

Floor plan not to scale - for guidance purposes only.
Plan produced using PlanUp.

Viewing

Please contact our Stuart Charles Estate Agents Office on 01536 234264 if you wish to arrange a viewing appointment for this property or require further information.

Energy Efficiency Graph



These particulars, whilst believed to be accurate are set out as a general outline only for guidance and do not constitute any part of an offer or contract. Intending purchasers should not rely on them as statements of representation of fact, but must satisfy themselves by inspection or otherwise as to their accuracy. No person in this firm's employment has the authority to make or give any representation or warranty in respect of the property.