

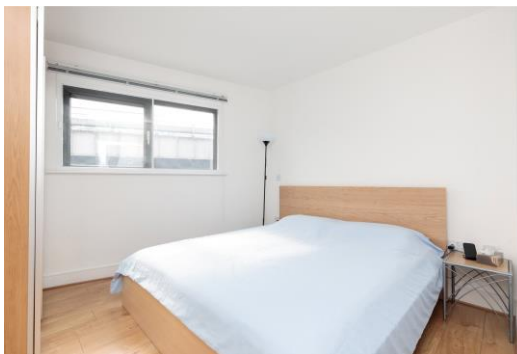


Tower View

171 Tower Bridge Road, SE1

£2,650 per month
(£611.54 per week)

An exceptional two bedroom apartment. The property comprises two double bedrooms and two bathrooms, balcony and is furnished to a very high standard.



Tower View

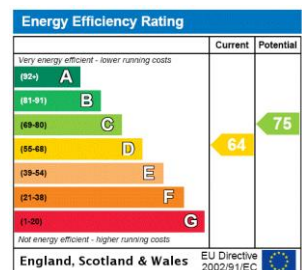
171 Tower Bridge Road, SE1

- TWO BEDROOM
- TWO BATHROOM
- BALCONY
- LIFT



An exceptional two bedroom apartment. The property comprises two double bedrooms and two bathrooms, balcony and is furnished to a very high standard. Bermondsey is situated on the south bank of the River Thames and is one of the capital's most up and coming areas. Bermondsey is on the Jubilee line making Canary Wharf and West London easily accessible. The area has a weekly antiques market on a Friday and is a short walk to Shad Thames, London Bridge & Bermondsey Street which are home to an array of bars and restaurants.

Minimum Term: 12 months
Deposit Required: £3,057.69
Local Authority: London Borough of Southwark (Council Tax)
Council Tax Band: E
EPC Rating: D
Furnished



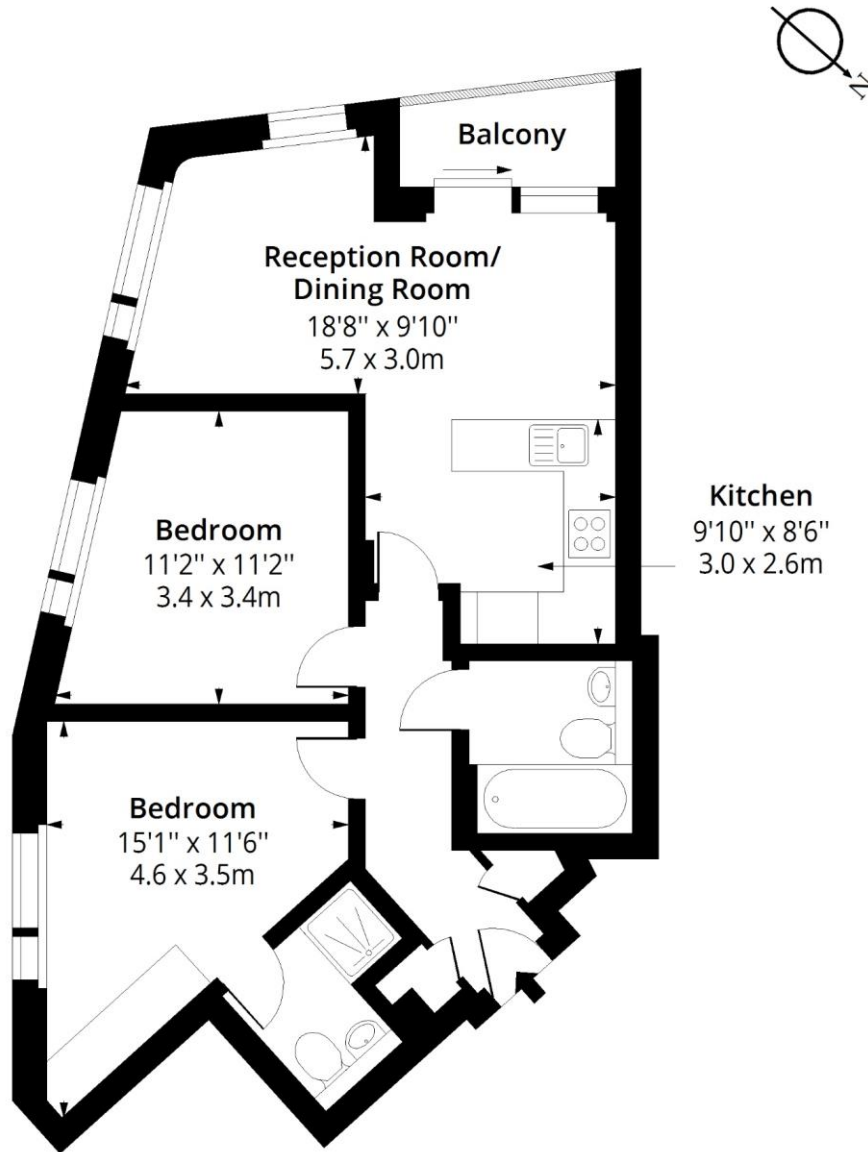
Chestertons Tower Bridge Lettings

220 Tower Bridge Road
 Tower Bridge
 London
 SE1 2UP
 towerbridge@chestertons.co.uk
 02073576911
 chestertons.co.uk

Additional tenant charges apply (fees apply to non-AST tenancies only)
 Tenancy Agreement Fee: £300
 References per Tenant/Guarantor: £60
 Inventory check (approx. £100 – £250 inc. VAT)
 chestertons.co.uk/property-to-rent/applicable-fees

Tower Bridge Road, SE1

Approx. Gross Internal Area 636 Sq Ft - 59.08 Sq M
Approx. Gross Balcony Area 29 Sq Ft - 2.69 Sq M



First Floor

Floor Area 636 Sq Ft - 59.08 Sq M



Measured according to RICS IPMS2. Floor plan is for illustrative purposes only and is not to scale. Every attempt has been made to ensure the accuracy of the floor plan shown, however all measurements, fixtures, fittings and data shown are an approximate interpretation for illustrative purposes only. 1 sq m = 10.76 sq feet.

lpaplus.com

ate: 26/9/2022

Chesterton Global Ltd trading as Chestertons for themselves and for the vendor of this property whose agents they are, give notice that (i) these particulars do not constitute any part of an offer or contract, (ii) all statements contained within these particulars are made without responsibility on the part of Chestertons or the vendor, (iii) whilst made in good faith, none of the statements contained within these particulars are to be relied upon as a statement or representation of fact, (iv) any intending purchasers must satisfy themselves by inspection or otherwise as to the correctness of each of the statements contained within these particulars, (v) the vendor does not make or give either Chestertons or any person in their employment any authority to make or give representation or warranty whatsoever in relation to this property. Wide angle lenses may be used. ©Copyright Chestertons | Chesterton Global Ltd |

Registered Office 40 Connaught Street, Hyde Park, London W2 2AB Registered Company Number 05334580.



This paper is
100% recyclable