

Westbourne Park Road, W11 £890,000

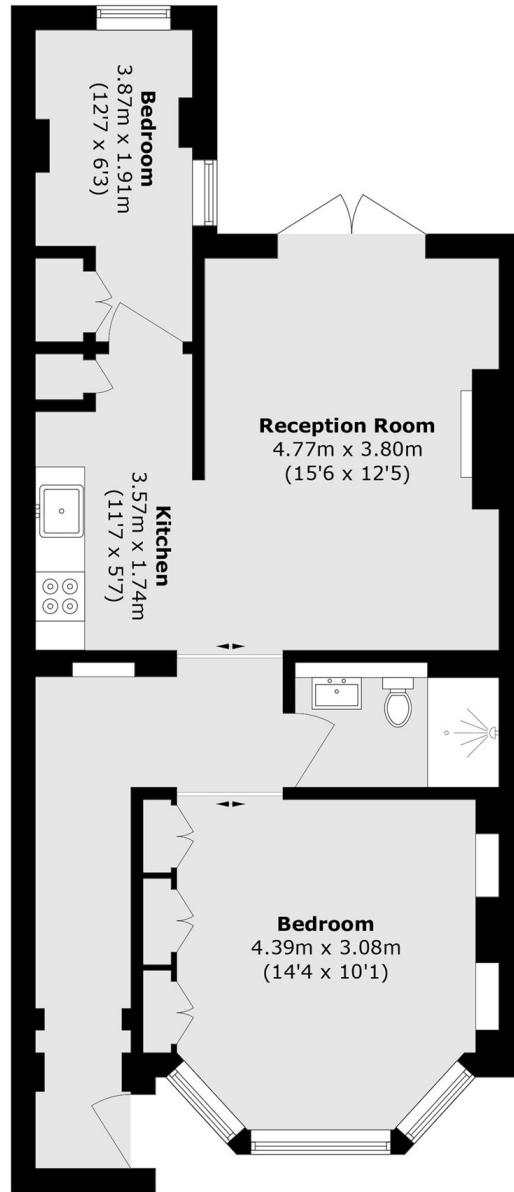
A stylishly refurbished two bedroom garden flat with its own front door. The open plan kitchen and reception has room to dine and leads out to the large private patio garden, making an ideal entertaining space. The service charge is on an ADHOC basis.

Westbourne Park Road is within an easy walking distance of the shops and boutiques on Westbourne Grove, Portobello Road and Golborne Road. Westbourne Park station is a short walk away and Paddington gives convenient access across London and to Heathrow.

Features

- Two Bedrooms
- Open Plan
- Stylishly Refurbished
- Private Garden
- Victorian Conversion
- Close To Amenities

Westbourne Park Road,
London, W11



Total area (approx.): 63.9 sq. m (687.8 sq. ft)