



BELLEFIELDS ROAD, SW9

£6,100 PCM

- Mid-terrace house
- Five bedrooms
- Three bathrooms
- Private garden
- Great location
- Energy rating: D





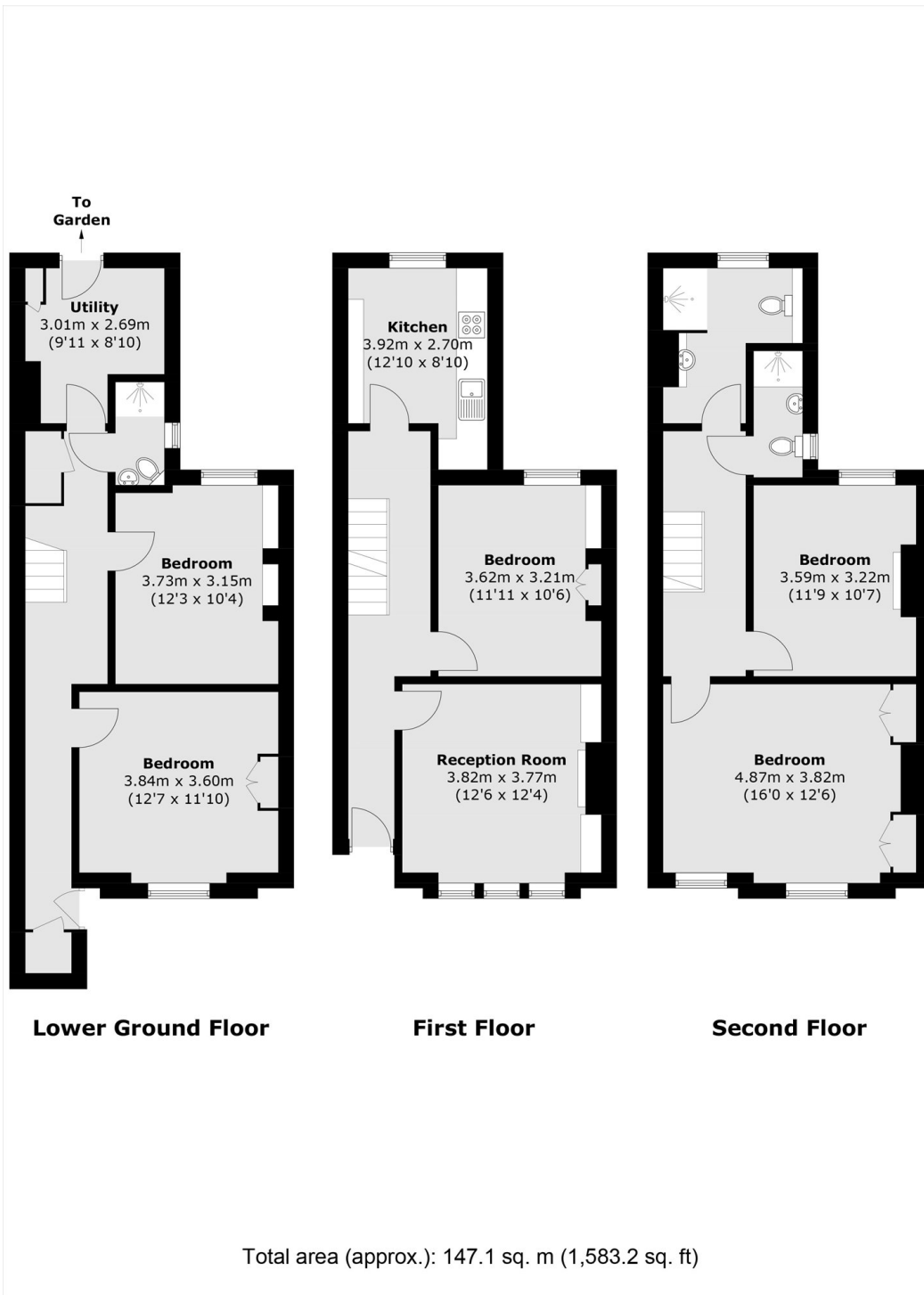
ABOUT THE HOME

Offered to market part-furnished, this charming mid-terrace home offers both style and location. Arranged over the three storeys, the accommodation comprises five bedrooms, three bathrooms, modern kitchen and a separate reception room. The property further benefits from a utility room and private garden. Suitable for a family or professional sharers.

Bellefields Road is a residential road conveniently located for the high street shops, cafés and recreational amenities of Brixton. Brixton (Victoria line) Underground and mainline (0.2 mile) offer swift commuting to the City, West End and outer London, along with numerous regular buses. The green open space of Brockwell Park is also close at hand.






JACKSONS CLAPHAM

73 Abbeville Road, London,
 SW4 9JN
 Sales: 020 8487 3177
 Lettings: 020 8487 3178

Energy Rating: D We aim to make our particulars both accurate and reliable. However they are not guaranteed; nor do they form part of an offer or contract. If you require clarification on any points then please contact us, especially if you're traveling some distance to view. Please note that appliances and heating systems have not been tested and therefore no warranties can be given as to their good working order.