



Oxhouse Court, Milton Keynes MK5 7GL

Viewings are highly recommended to fully appreciate the space and potential on offer

A rare opportunity to secure an extended, chain-free family home directly opposite Shenley Brook End Secondary School, with planning permission already granted to create a five-bedroom property.

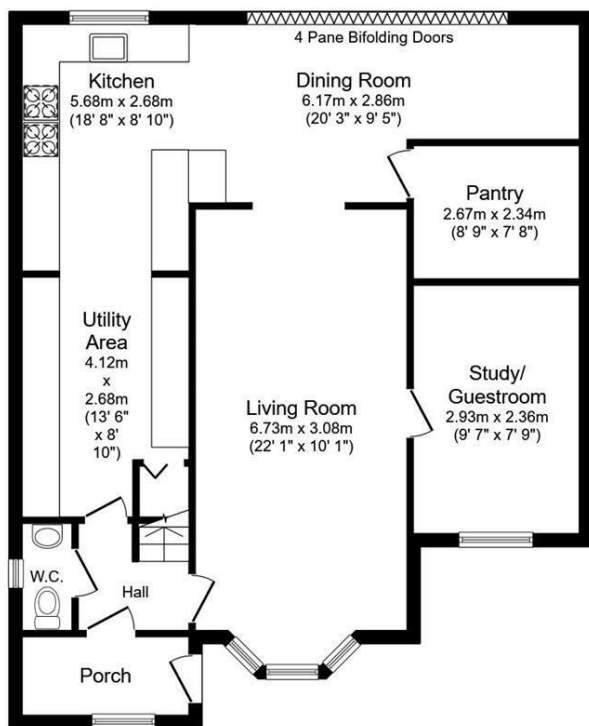
Set within a peaceful cul-de-sac, the property features a bright and welcoming 22ft living room, ideal for relaxing or entertaining. The stunning open-plan kitchen/diner benefits from a feature skylight, walk-in pantry and large utility room, offering excellent practicality for busy family life. Wide 4-pane bi-folding doors create a seamless connection to the rear garden.

The landscaped garden is modern, attractive and low maintenance, with a paved patio, neat lawn and a superb covered gazebo with lighting and heating for year-round use. A dedicated outdoor kitchen area provides the perfect space for alfresco dining and social gatherings. A fully insulated shed, currently used as a home office, offers valuable private workspace for multi-person home working.

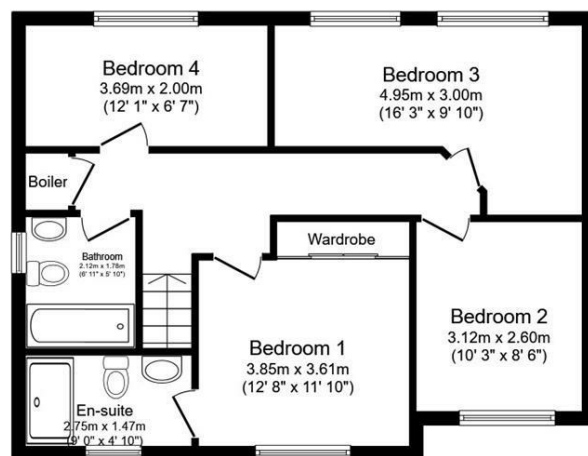
The converted garage now forms a spacious study/guest room. Upstairs are four well-proportioned bedrooms,

- Open Viewing Available – By Appointment Only
- Opposite one of MK's most sought after schools
- Fully extended with skylit kitchen/diner
- Separate home-office building
- Master bedroom with en-suite
- Loft conversion already approved
- Extended 4-bedroom detached home
- Driveway for multiple cars
- Walk-in pantry

£625,000



Ground Floor



First Floor

Total floor area 146.2 sq.m. (1,573 sq.ft.) approx

This floor plan is for illustrative purposes only. It is not drawn to scale. Any measurements, floor areas (including any total floor area), openings and orientation are approximate. No details are guaranteed, they cannot be relied upon for any purpose and they do not form part of any agreement. No liability is taken for any error, omission or misstatement. A party must rely upon its own inspection(s). Powered by www.focalagent.com

