

Ben Allman
Estate & Letting Agents



138 Magdalen Road

, Norwich, NR3 4BA

Offers in excess of £155,000



2



1

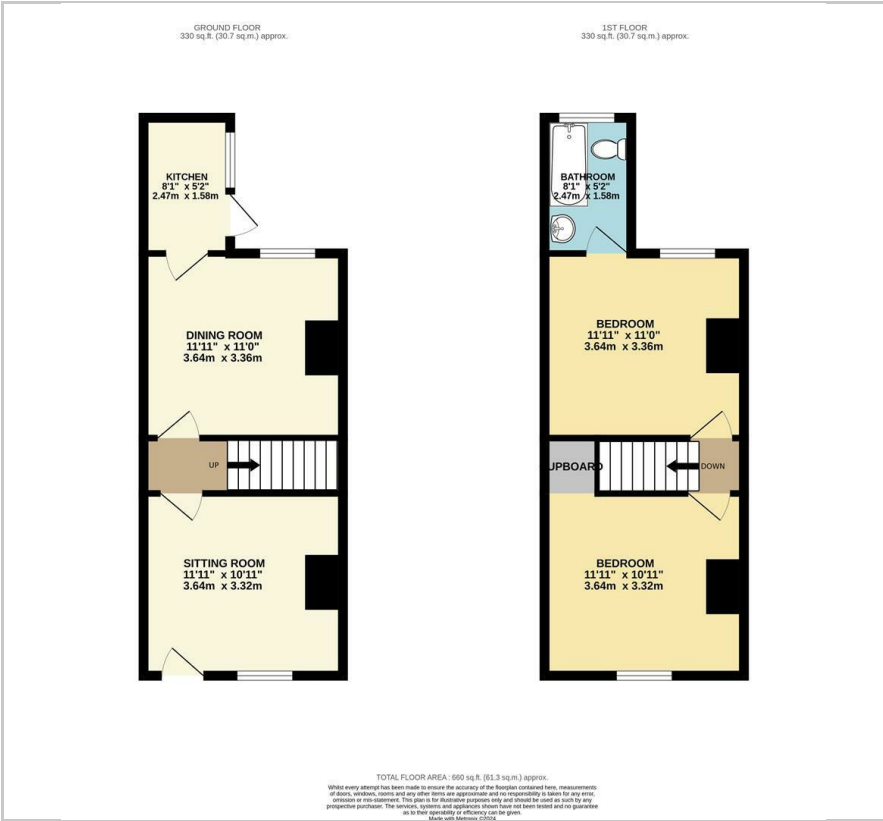


2

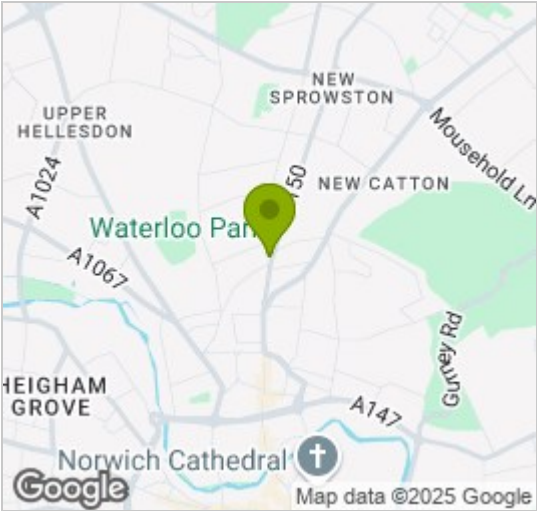


E

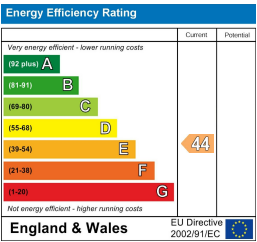
Floor Plan



Area Map



Energy Efficiency Graph



Viewing

Please contact our Ben Allman Estate Agents Office on 01603 555577 if you wish to arrange a viewing appointment for this property or require further information.

- No Onward Chain
- Electric Storage Heating
- Bi-Sected Rear Garden
- First Floor Bathroom
- EPC Rating - E
- Requires Modernising
- Mostly Double Glazed
- Two Double Bedrooms
- Sold As Seen (Property To Be Cleared By Purchaser)
- Permit Parking



Packed with potential is this North City terrace house requiring updating.

Upstairs there are two double bedrooms and a bathroom all with double glazed windows. Downstairs there is a sitting room with double glazed window to front, a dining room and separate kitchen which each have a single glazed window.

To the rear there is a small lean-to and a bisected garden.



These particulars, whilst believed to be accurate are set out as a general outline only for guidance and do not constitute any part of an offer or contract. Intending purchasers should not rely on them as statements of representation of fact, but must satisfy themselves by inspection or otherwise as to their accuracy. No person in this firm's employment has the authority to make or give any representation or warranty in respect of the property.