

for sale

offers in excess of **£325,000**



## St. Olams Close Luton LU3 2LD

This three/four bedroom family home has been lovingly looked after by its current owner, it has been extended to the rear allowing spacious living and is situated in the ever popular Icknield catchment in a cul-de-sac. This makes the ideal first time purchase for a growing family.



# St. Olams Close Luton LU3 2LD

## Entrance Hall

Double glazed frosted door and window to front aspect. Storage cupboard. Stairs leading to first floor. Wooden flooring. Radiator.

## Kitchen/Breakfast Room

Double glazed window to front aspect. Fitted kitchen comprising a range of wall and base units with work surfaces over incorporating a stainless steel sink and drainer unit. Plumbing for a washing machine. Integrated gas hob with oven and fan over. Integrated fridge/freezer. Combi boiler.

## Lounge

Double glazed window to rear aspect. Wooden floor. Two

radiators.

## Dining Room/Bedroom Four

Double glazed bi folding doors to rear aspect. Wooden flooring. Radiator.

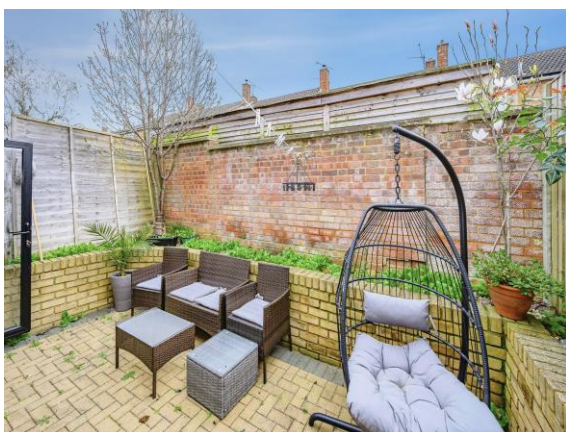
## First Floor Landing

Loft access - part boarded and insulated.

## Bedroom One

Double glazed window to front aspect. Radiator.

## Bedroom Two



Double glazed window to rear aspect. Radiator.

### **Bedroom Three**

Double glazed window to rear aspect. Radiator.

### **Bathroom**

Double glazed frosted window to front aspect. Suite comprising bath with shower over, wash hand basin and low level wc. Heated towel rail. Fully tiled. Extractor fan.

### **Front Garden**

Lawn area with paved pathway to front aspect. Shrubs and trees.

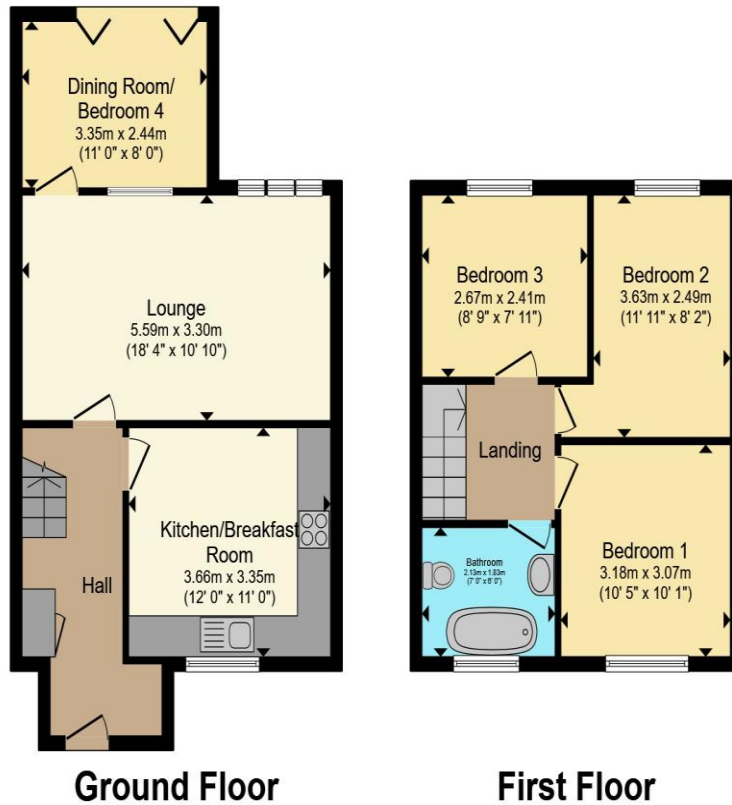
### **Rear Garden**

Paved courtyard garden with shrubs.

### **Garage**

Situated in a block. White door.





Total floor area 86.3 m<sup>2</sup> (929 sq.ft.) approx

This floor plan is for illustrative purposes only. It is not drawn to scale. Any measurements, floor areas (including any total floor area), openings and orientation are approximate. No details are guaranteed, they cannot be relied upon for any purpose and they do not form part of any agreement. No liability is taken for any error, omission or misstatement. A party must rely upon its own inspection(s). Powered by www.propertybox.io



To view this property please contact Connells on

**T 01582 592332**  
**E lutonnorth@connells.co.uk**

1A Riddy Lane  
 LUTON LU3 2AD

Property Ref: LUN103812 - 0007

Tenure:Freehold EPC Rating: C

Council Tax Band: B

**view this property online [connells.co.uk/Property/LUN103812](https://www.connells.co.uk/Property/LUN103812)**



1. MONEY LAUNDERING REGULATIONS Intending purchasers will be asked to produce identification documentation at a later stage and we would ask for your co-operation in order that there will be no delay in agreeing the sale. 2. These particulars do not constitute part or all of an offer or contract. 3. The measurements indicated are supplied for guidance only and as such must be considered incorrect. Potential buyers are advised to recheck measurements before committing to any expense. 4. We have not tested any apparatus, equipment, fixtures, fittings or services and it is in the buyers interest to check the working condition of any appliances.

Connells Residential is registered in England and Wales under company number 1489613, Registered Office is Cumbria House, 16-20 Hockliffe Street, Leighton Buzzard, Bedfordshire, LU7 1GN. VAT Registration Number is 500 2481 05.

see all our properties at [www.connells.co.uk](https://www.connells.co.uk) | [www.rightmove.co.uk](https://www.rightmove.co.uk) | [www.zoopla.co.uk](https://www.zoopla.co.uk)