



2



1



1



C

Whittingham Road, Nottingham, NG3 6AZ

DavidJames
the estate agent

£950

About This Property

A well-presented and freshly redecorated first-floor maisonette, ideally situated within walking distance of Mapperley's excellent amenities and frequent bus services. This bright and spacious home boasts a modern, neutral décor throughout. The generous lounge/dining room features a charming bay window that fills the space with natural light while offering stunning elevated views. The contemporary kitchen is fitted with stylish grey units, integrated cooking appliances, and includes a dishwasher, washing machine and fridge freezer, providing both practicality and a sleek finish. There are two well-proportioned double bedrooms, alongside a modern three-piece bathroom suite complete with an electric shower over the bath. Outside, the property benefits from a rear garden with a lawn and planted borders, as well as a garage located in a nearby block.

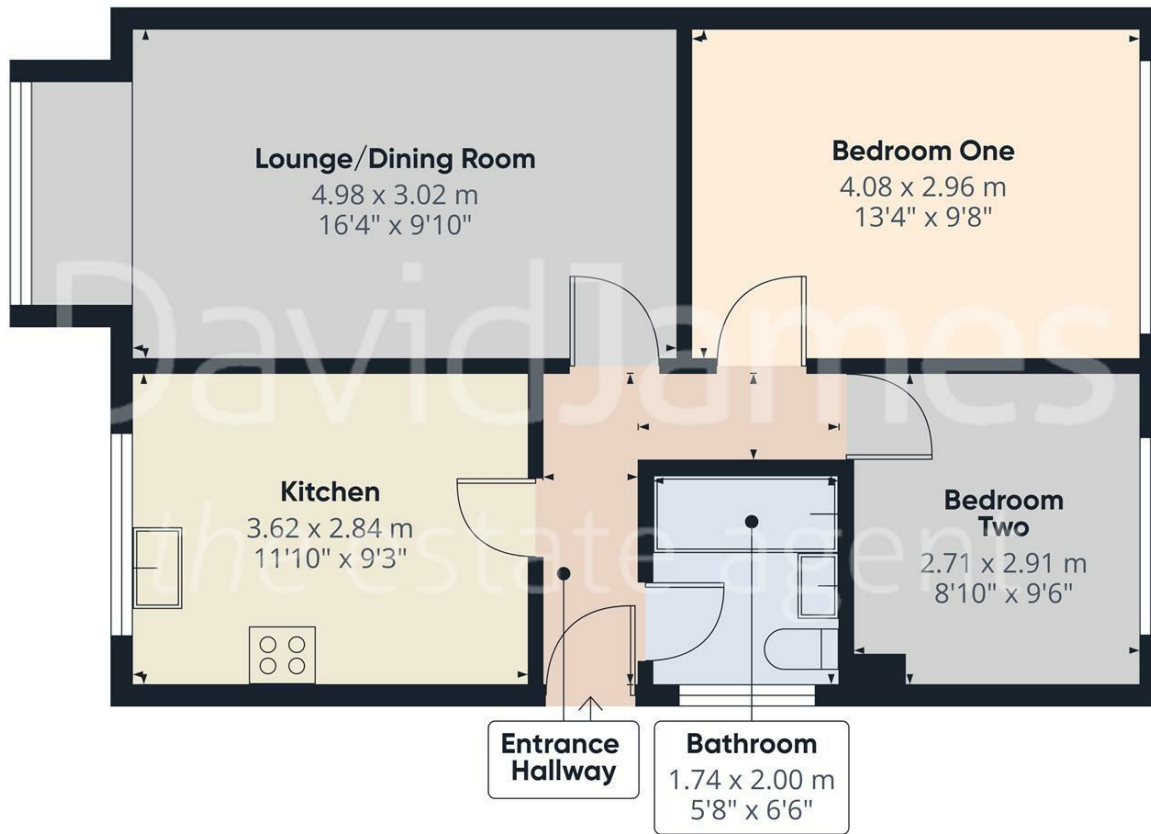
TENANCY DETAILS

Available From: Now
Tenancy Term: Minimum 6 months
Furnishing: Unfurnished
EPC Rating: C
Council Band: A
Pets: Not permitted

- First-floor maisonette
- Modern, neutral décor, freshly painted throughout
- Spacious lounge/dining room with bay window & stunning elevated views
- Contemporary kitchen with integrated appliances
- Two double bedrooms
- Modern three-piece bathroom with electric shower
- Full double glazing & gas central heating
- Rear garden with lawn and borders
- Garage in block
- Close to Mapperley's amenities and public transport





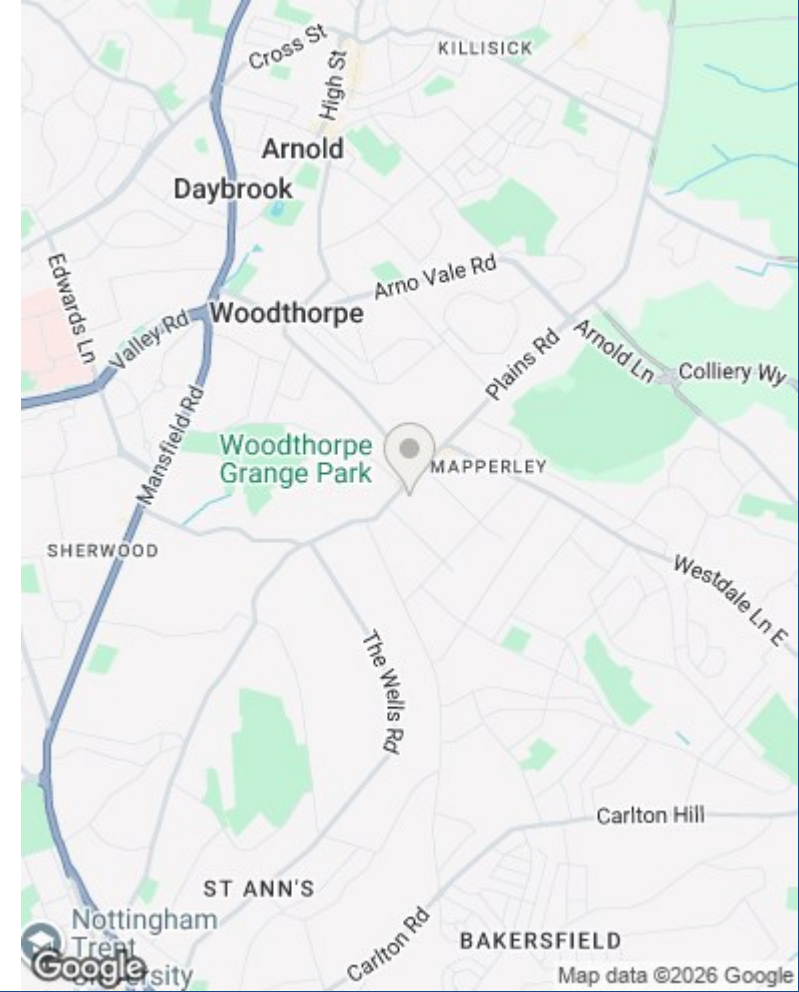


Approximate total area**
55.3 m²
596 ft²

(1) Excluding balconies and terraces

Calculations reference the RICS IPMS 3C standard. Measurements are approximate and not to scale. This floor plan is intended for illustration only.

GIRAFFE360



These particulars are produced in good faith, are set out as a general guide only and do not constitute any part of a contract. No person in the employment of David James Estate Agents Ltd has any authority to make any representation whatsoever in relation to the property. All services, together with electrical fittings or fitted appliances have NOT been tested. All the measurements given in the details are approximate. Floor plans are for illustrative purposes only and are not drawn to scale. The position and size of doors, windows, appliances and other features are approximate only. The photographs of this property have been taken with a 10mm wide-angle lens. No responsibility can be accepted for any loss or expense incurred in viewing. If you have a property to sell you may wish to take advantage of our free valuation service. David James Estate Agents have established professional relationships with third-party suppliers for the provision of services to Clients. As remuneration for this professional relationship, the agent receives referral commission from the third-party company. David James Estate Agents receives the following commission from each third party supplier on a per referral basis: W A Barnes Ltd: £60 including VAT. All Moves UK Ltd: 18% including VAT of the invoice total (£107 including VAT average). MoveWithUs Limited: £188 including VAT (average).

**Council Tax Band: A
Gedling Borough Council**

DavidJames
the estate agent

David James Estate Agents
45b Plains Road, Mapperley, Nottingham, NG3 5JU
t: 0115 962 4213 e: lettings@david-james.com

