



Antony Road, Shirley, B90 2NX

£475,000

- Approved Planning Permission - PL/2025/01661/MINFHO
- An Extended & Well Presented Semi Detached Family Home
- Three Double Bedrooms
- Two Reception Rooms
- Extended Kitchen
- Generous Utility Room
- Four Piece Family Bathroom
- Garage/Store Room
- Landscaped Rear Garden
- Sought After Location



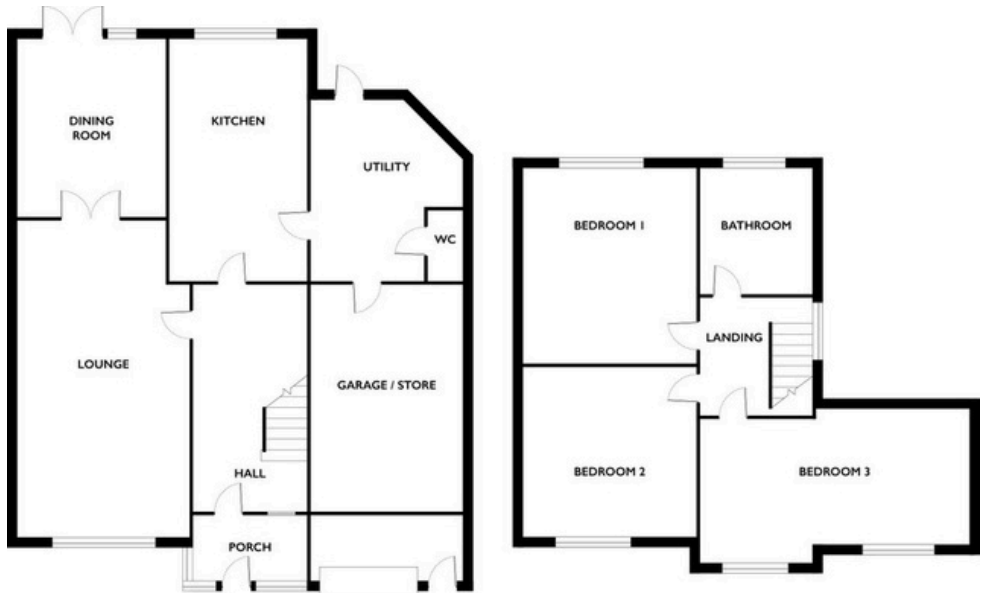
SCAN TO VIEW
VIRTUAL TOUR



- Enclosed Porch
- Welcoming Entrance Hall
- Lounge to front - 6.45m x 3.45m (21'2" x 11'4")
- Dining Room to rear - 3.61m x 2.67m (11'10" x 8'9")
- Extended Kitchen to rear - 5.51m x 2.64m (18'1" x 8'8")
- Generous Utility Room to rear - 3.71m max x 2.92m max (12'2" x 9'7")
- Guest WC
- Garage/Store Room to front - 4.67m x 3.12m (15'4" x 10'3")
- Bedroom One to rear - 3.89m x 3.4m (12'9" x 11'2")
- Bedroom Two to front - 3.48m x 3.4m (11'5" x 11'2")
- Extended Bedroom Three to front - 5.51m x 2.36m max (18'1" x 7'9")
- Four Piece Family Bathroom to rear - 2.59m x 2.21m (8'6" x 7'3")
- Landscaped Rear Garden

A well presented & extended semi detached family home in a sought after location benefitting from approved planning permission, three double bedrooms, two reception rooms, extended kitchen, generous utility room, guest WC, four piece family bathroom, garage/store room, landscaped rear garden and off road parking.

Energy Efficiency Rating		
	Current	Potential
Very energy efficient - lower running costs		
(92 plus) A		
(81-91) B		
(69-80) C		77
(55-68) D		
(39-54) E	52	
(21-38) F		
(1-20) G		
Not energy efficient - higher running costs		
England & Wales	EU Directive 2002/91/EC	



COUNCIL TAX BAND: E
 EPC Rating: D
 Tenure: Freehold

The vendor advises that the property is Freehold. Drakes Estate Agents will not be held responsible should this information be incorrect, and we request that your conveyancing solicitor verifies this throughout the conveyancing procedure.

The information provided by Drakes Estate Agents do not constitute part or all of an offer or contract, the measurements are supplied for guidance only and as such must be considered incorrect, we have not tested any appliances, fittings, services or equipment or and we ask all potential buyers to check the working of any appliances and the measurements before committing to any expenses. Some properties may have been staged for marketing purposes using AI (artificial intelligence). For Money Laundering purposes we will request any potential buyer at offer stage to provide proof of identity before negotiation takes place. Drakes Estate Agents do receive a small referral fee from some Conveyancing Solicitors & Mortgage Brokers which is on a case-by-case basis, and is subject to a minimum referral fee of £50.