

3 Tyrrell Crescent, South Wootton PE30 3QL

£250,000

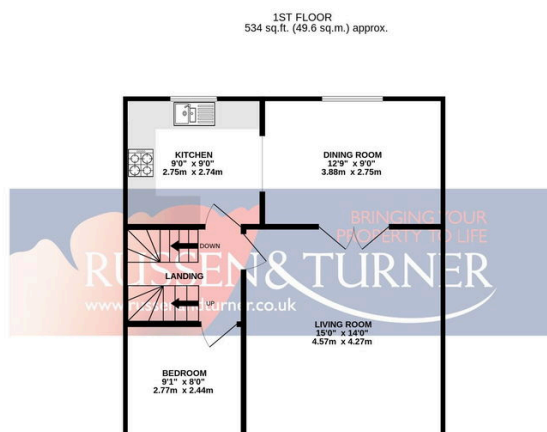
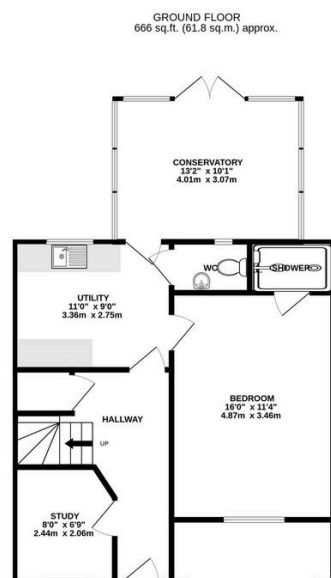
🛏 4 🚿 2 🛋 3



NO OWNARD CHAIN! If space and flexibility are at the top of your Wishlist, this well-presented mid-terraced home in the ever-popular South Wootton could be just what you've been searching for. Set across three floors, it offers an impressive amount of adaptable living space that can be tailored to suit your lifestyle.

Key Features

- Mid Terraced House
- Sought After Location
- Three Bathrooms
- Gas Central Heating
- Two Reception Rooms
- Four Bedrooms
- No Onward Chain
- Off-road Parking
- Private Rear Garden
- Versatile Accommodation - Set Over Three Floors



TOTAL FLOOR AREA: 1598 sq.ft. (148.4 sq.m.) approx.

Whilst every attempt has been made to ensure the accuracy of the floorplan contained here, measurements of doors, windows, rooms and any other items are approximate and no responsibility is taken for any error, omission or mis-statement. This plan is for illustrative purposes only and should be used as such by any prospective purchaser. The services, systems and appliances shown have not been tested and no guarantee as to their operability or efficiency can be given.
Made with Metropix ©2025