



Upper Tulse Hill, SW2

£525,000

Spread over the first floor of this grand period property is this two double bedroom property. With high ceilings, big windows and wooden floors throughout, this property is full of character and charm.

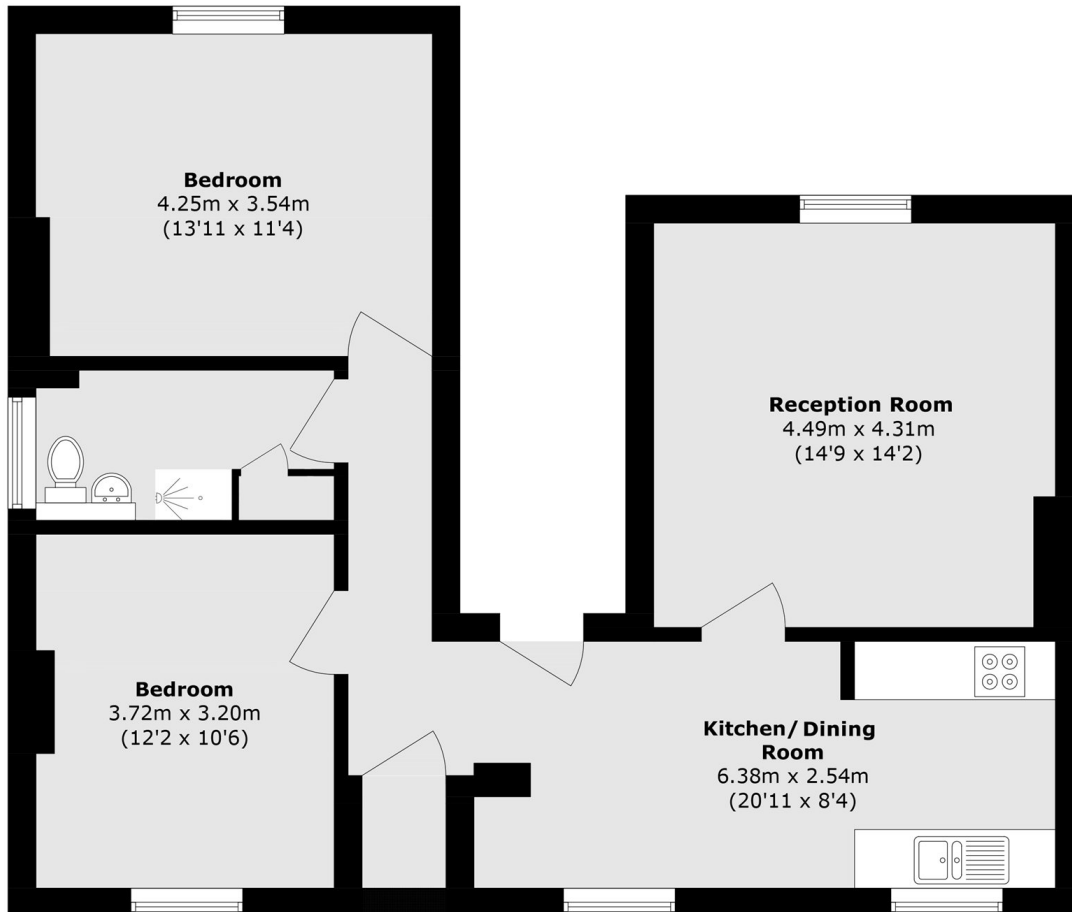
There is a separate kitchen with space for dining as well as a large reception over looking the gardens. Although currently laid out as one big space, this property also comes with a separate section of the garden. It is also offered to the market with no onward chain and off-street parking.

Upper Tulse Hill is a residential street nestled in between Streatham Hill & Brixton Hill and benefits from a selection of local amenities, green open spaces of Brockwell Park nearby and transport via Brixton, Herne Hill & Streatham Hill.

Features

- Two Double Bedrooms
- No Onward Chain
- Private share of Garden
- Off-Street Parking
- Quiet Location
- High Ceilings

Upper Tulse Hill, London, SW2



Total area (approx.): 76.0 sq. m (818.0 sq. ft)