

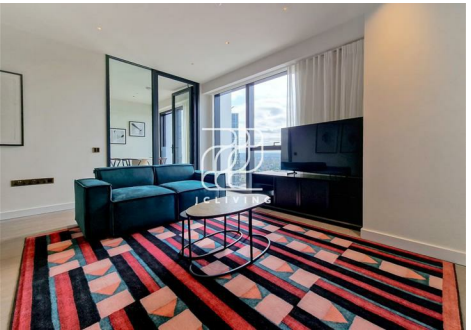
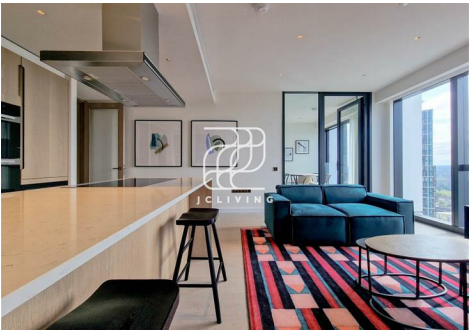
Directions

Viewings

Viewings by arrangement only. Call 02033696888 to make an appointment.

EPC Rating

Energy Efficiency Rating		
	Current	Potential
Very energy efficient - lower running costs		
(92 plus) A		
(81-91) B		
(69-80) C		
(55-68) D		
(39-54) E		
(21-38) F		
(1-20) G		
Not energy efficient - higher running costs		
England & Wales	EU Directive 2002/91/EC	



ML57 Apartment 4003, River Park Tower 1 Nine Elms Lane, London, SW8  
5HF  
£2,355



# River Park Tower 1 Nine Elms Lane, London SW8 5HF

Welcome to this charming flat located at 1 Nine Elms Lane, London. This delightful property offers a perfect blend of comfort and modern living, making it an ideal choice for individuals or small families seeking a vibrant urban lifestyle.

The flat features a spacious reception room, providing a welcoming space for relaxation and entertaining guests. With two well-appointed bedrooms, there is ample room for rest and privacy. The property also boasts two bathrooms, ensuring convenience for all occupants.

Situated in a prime location, this flat benefits from excellent transport links and a variety of local amenities, including shops, restaurants, and parks, all within easy reach. The surrounding area is known for its lively atmosphere and community spirit, making it a wonderful place to call home.

This property is a fantastic opportunity for those looking to enjoy the best of London living. With its modern features and prime location, it is sure to attract interest. For further details, please refer to the reference number JC25051712. Don't miss the chance to make this lovely flat your new home.



Council Tax Band: G

