



Instinct Guides You



Harbour View Road, Portland Offers In Excess Of £190,000

- Stunning Sea Views
- Generous Southerly Garden
- Three Bedrooms
- Two Reception Rooms
- Contemporary Kitchen
- Near Chesil Beach
- Downstairs Shower Room
- Coastal Living



Registration No. 08079158 Directors Mr Wilson, Mr Tominey

Courtesy Notice Upon using WilsonTominey as selling agents ensure we are made aware of contractual obligations you may be under. We can then proceed accordingly.

WilsonTominey Ltd
15 Westham Rd.
DT4 8NS

T 01305 775500
E sales@wilsontominey.co.uk
W www.wilsontominey.co.uk



Situated within the heart of Fortuneswell is this three bedroom, two bathroom home with STRIKING SEA VIEWS across Chesil Vista and Portland Marina. The property enjoys a generous southerly garden and separate cloakroom whilst located just moments from some of Portland's staple vibrancy, charm and coastal living.

A green space fronts the home, setting the entrance back. Inside, a spacious lounge enjoys the first of the elegant sea views - Ample floorspace flows seamlessly to the dining room, amplifying light and space. A stylish kitchen lies conveniently adjacent with a range of units and storage.alongside ample preparation space. Additionally, an outhouse provides a downstairs shower room, doubling up downstairs toilet. The ground floor is completed by a separate utility.

The first floor hosts all three bedrooms. Bedrooms One and Two enjoy excellent proportions with Bedroom One enjoying enviable views across Portland's infamous Chesil beach. Bedroom Three enjoys similar views as a single room or potential study; A family bathroom completes the floor.

Outside, a generous rear garden enjoys the sun via a southerly aspect as well as benefitting from side access. Hand crafted portland stone extends the patio area with established gardens and steps to the sun trap.

Room Dimensions

Porch

Living Room 14'0" x 11'3" (4.27m x 3.44m)

Dining Room 10'4" x 10'1" max (3.15m x 3.09m max)

Kitchen 10'1" max x 9'10" max (3.08m max x 3.02m max)

Utility 8'11" x 4'11" (2.73m x 1.51m)

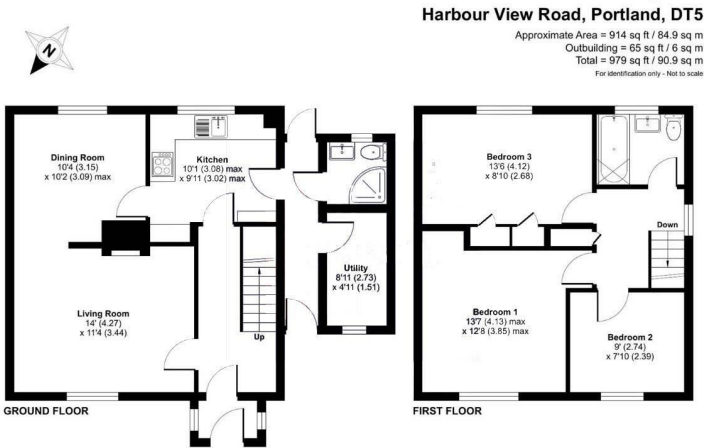
Downstairs Shower Room

Bedroom One 13'6" max x 12'7" max (4.13m max x 3.85m max)

Bedroom Two 8'11" x 7'10" (2.74m x 2.39m)

Bedroom Three 13'6" x 8'9" (4.12m x 2.68m)

Family Bathroom



Energy Efficiency Rating		Environmental Impact (CO ₂) Rating							
	Current	Potential		Current	Potential				
Very energy efficient - lower running costs	<div><div></div><div></div><div></div><div></div><div></div><div></div><div></div></div>		Very environmentally friendly - lower CO ₂ emissions	<div><div></div><div></div><div></div><div></div><div></div><div></div><div></div></div>					
Not energy efficient - higher running costs			Not environmentally friendly - higher CO ₂ emissions						
England & Wales			England & Wales						
EU Directive 2002/91/EC			EU Directive 2002/91/EC						

Important Notice: Particulars are prepared for marketing purposes only and should not be treated as a statement of the condition of any building, fixture or appliance. All measurements, floor plans and lease/ maintenance are approximate and not to be relied upon. Purchasers should make their own checks before relying on any of the information provided herein. * For double glazing and gas radiator heating, it is where specified.