



Nightingale Lane

London, SW12

Asking Price £450,000

Newly refurbished Victorian conversion on Wandsworth Common.

Bright end-of-chain apartment with a large bay window, open-plan living, spacious bedroom, family bathroom, communal garden, and secure bike storage.

CHESTERTONS



Nightingale Lane

London, SW12



A newly refurbished, high-standard Victorian conversion just off the highly sought-after Wandsworth Common, perfectly blending modern comfort with period charm. This stylish apartment features a bright, open-plan reception, kitchen, and dining area, flooded with natural light through a large bay window, along with a spacious double bedroom and a bathroom. Additional benefits include a long lease, an additional laundry room, and secure bike storage.

Residents also enjoy access to a communal garden, ideal for relaxing outdoors. The property is conveniently located next to Wandsworth Common and near excellent transport links, shops, bars, restaurants along Bellevue Road, and a selection of reputable schools.

Tenure: Leasehold 125 years

Service Charge: £0

Ground Rent: £1

Local Authority: London Borough of Wandsworth

Council Tax Band: D

Score	Energy rating	Current	Potential
92+	A		
81-91	B		
69-80	C		
55-68	D	58 D	71 C
39-54	E		
21-38	F		
1-20	G		

Chestertons Wandsworth Common Sales

Chestertons Estate Agents

4 Bellevue Road

London

SW17 7EG

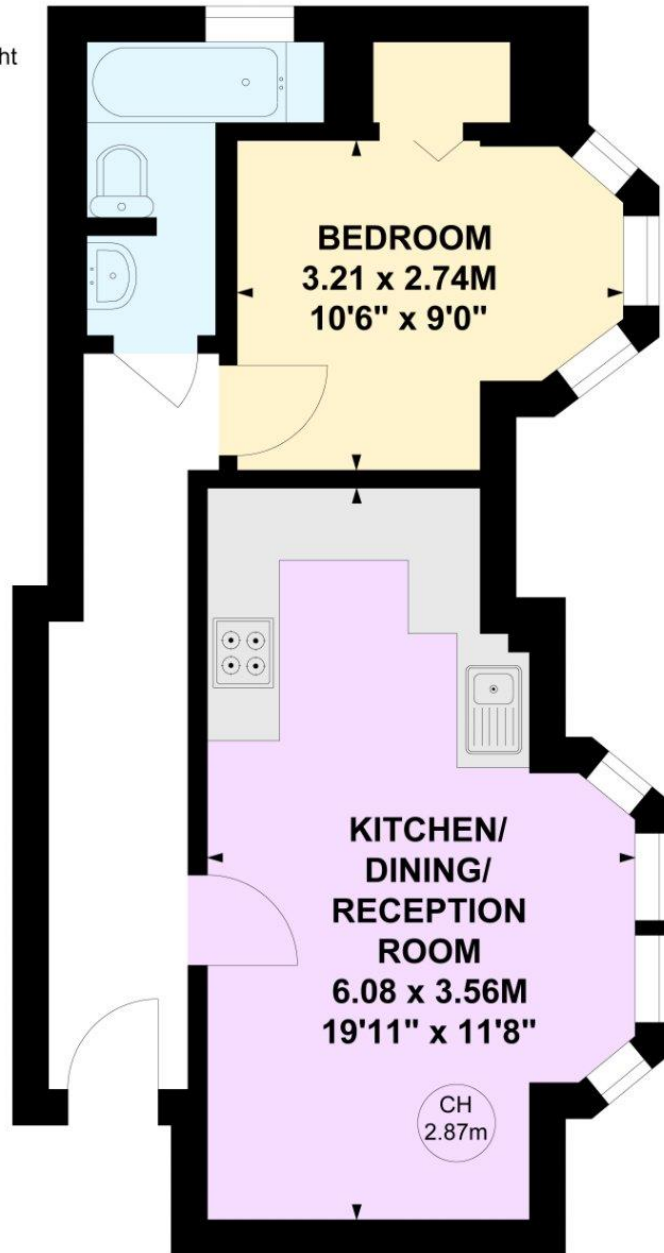
020 8767 0086

[chestertons.co.uk](https://www.chestertons.co.uk)

Nightingale Lane, SW12

Approximate gross internal area
38.88 sq m / 418 sq ft

Key :
CH - Ceiling Height



Ground Floor

Not to scale, for guidance only and must not be relied upon as a statement of fact.
All measurements and areas are approximate only

