



## 16 Hunter Road

Willesborough Ashford, TN24 0RY

£1,400 Per Month

Situated in this convenient location, this good sized well presented home has two reception rooms, kitchen and shower room to the ground floor. The kitchen has a range of modern units and white goods.

On the first floor there are two double bedrooms and a four piece bathroom suite. As the incoming Tenant you will appreciate the double glazing, gas central heating system, solar panels and part furnishing.

The long private drive can accommodate up to four vehicles. Both the garage and the garden cabin have power and lighting.

To the bottom of the well stocked garden there is an greenhouse and the Landlord also employs a gardener to prune shrubs and bushes twice a year.

SECURITY DEPOSIT £1615.00  
COUNCIL TAX BAND C (Ashford Borough Council)  
EPC RATING C (69)

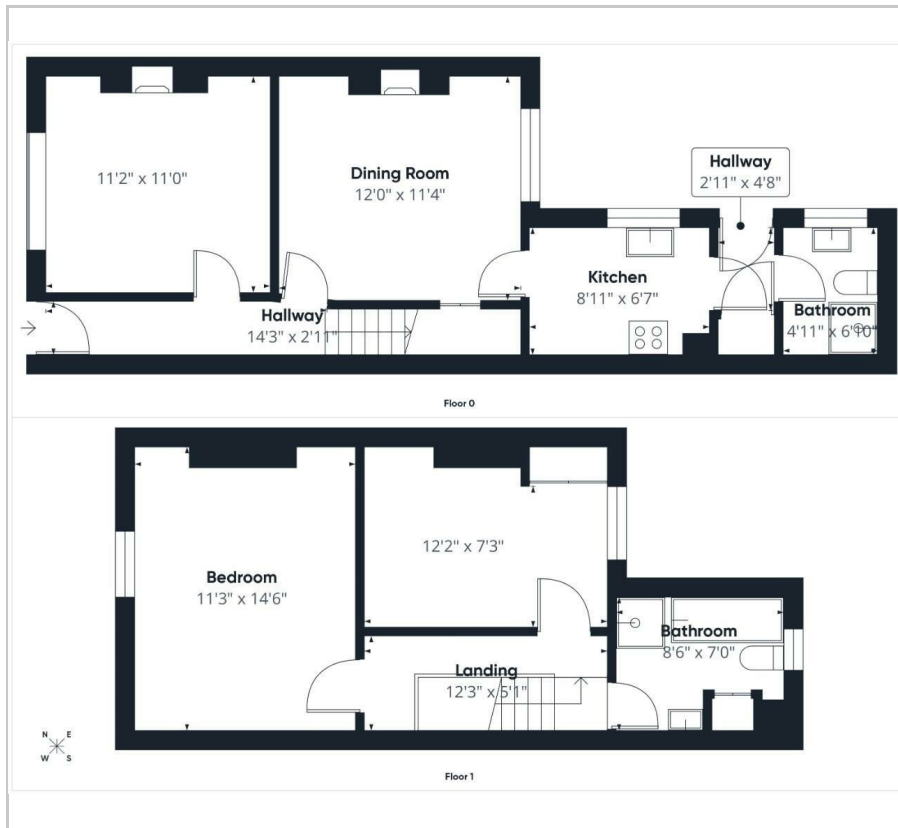
### Viewing

Please contact our Ashford Office on 01233 646411 if you wish to arrange a viewing appointment for this property or require further information.

- FANTASTIC OPPORTUNITY. CALL US NOW TO ARRANGE AN APPOINTMENT
- VERY WELL PRESENTED TWO BEDROOM HOME
- PART FURNISHED
- TWO RECEPTION ROOMS
- KITCHEN AND GROUND FLOOR SHOWER ROOM
- FIRST FLOOR FOUR PIECE BATHROOM
- LARGE REAR GARDEN WITH A CABIN OFFERING POWER AND LIGHT. GREEN HOUSE
- DRIVEWAY AND DETACHED GARAGE
- DOUBLE GLAZING AND GAS CENTRAL HEATING SYSTEM. SOLAR PANELS
- WELL LOCATED FOR THE M20, WILLIAM HARVEY HOSPITAL AND TOWN CENTRE



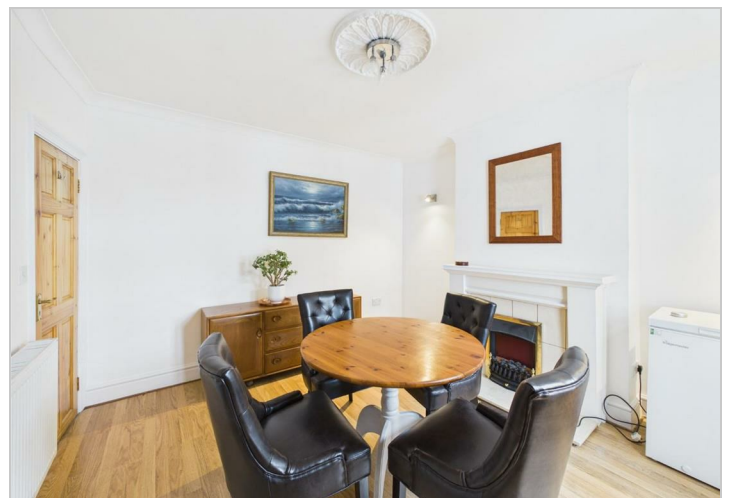
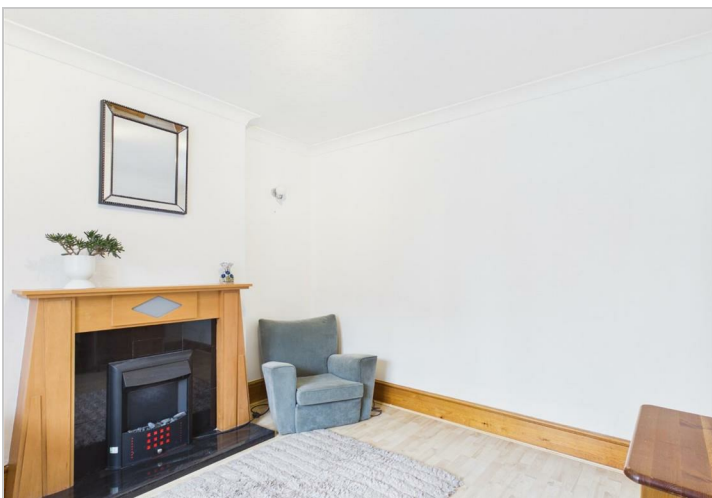
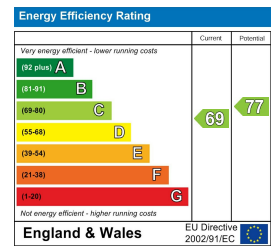
## Floor Plan



## Area Map



## Energy Efficiency Graph



These particulars, whilst believed to be accurate are set out as a general outline only for guidance and do not constitute any part of an offer or contract. Intending purchasers should not rely on them as statements of representation of fact, but must satisfy themselves by inspection or otherwise as to their accuracy. No person in this firm's employment has the authority to make or give any representation or warranty in respect of the property.