



HARBERSON ROAD, SW12

£2,800 per month

This fantastic two bedroom apartment is beautifully decorated with modern interiors and flooded with natural light.

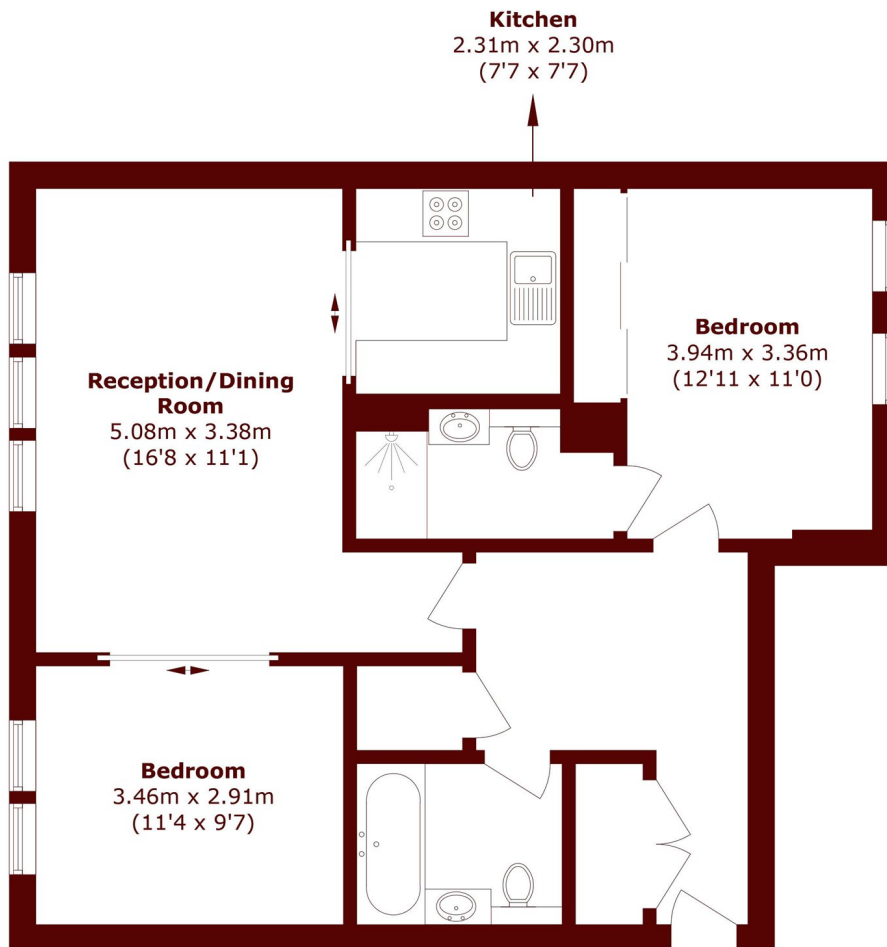
Two bedrooms
Two bathrooms
Wooden flooring

Wandsworth
Off street parking
Modern finish

@marshandparsons
marshandparsons.co.uk

MARSH &
PARSONS

STEP INSIDE HARBERSON ROAD



Total area (approx.): 71.8 sq. m (772.8 sq. ft)

Balham & Clapham South
020 8772 9200

Energy Rating: We aim to make our particulars both accurate and reliable. However, they are not guaranteed; nor do they form part of an offer or contract. If you require clarification on any points then please contact us, especially if you're traveling some distance to view. Please note that appliances and heating systems have not been tested and therefore no warranties can be given as to their good working order

MARSH &
PARSONS