



Highland Road | | Weymouth | DT4 0BG

Offers Over £255,000

BEAUMONT  JONES

**Highland Road |
Weymouth | DT4 0BG
Offers Over £255,000**

Charming two double bedroom character terraced house, beautifully modernised throughout while retaining its original style. The property offers bright, stylish living spaces and a well presented contemporary finish. To the rear, a sunny private garden provides the perfect spot for relaxing or entertaining. Ideal for first time buyers, small families, or investors alike.

- Two Double Bedrooms
- Large Rear Garden
- Modern Interiors
- Perfect First Time Purchase
- Spacious Living Accomodation
- Walking Distance Of Town Center And Harbour
- Well-Regarded Schools Close By

Full Description

Entrance into this beautiful home is via a front aspect double glazed UPVC door leading into a welcoming hallway with stairs rising to the first floor, door leading through to the living room area, an opening leads through to the dining area and a further opening into the kitchen. The generous sized open plan lounge/diner boasts a front aspect double glazed bay window, rear aspect double glazed window, wall mounted radiators, plenty of space for furniture and a large dining table and chairs. The kitchen comprises eye and base level units with wooden work surfaces over, integral dishwasher, eye level integral oven, inset four ring electric hob and



This well-presented home is the perfect first time purchase offering spacious living accommodation.



extractor fan over, space and plumbing for a washing machine, space for a fridge/freezer, partially tiled splashback and door leading to the rear garden.

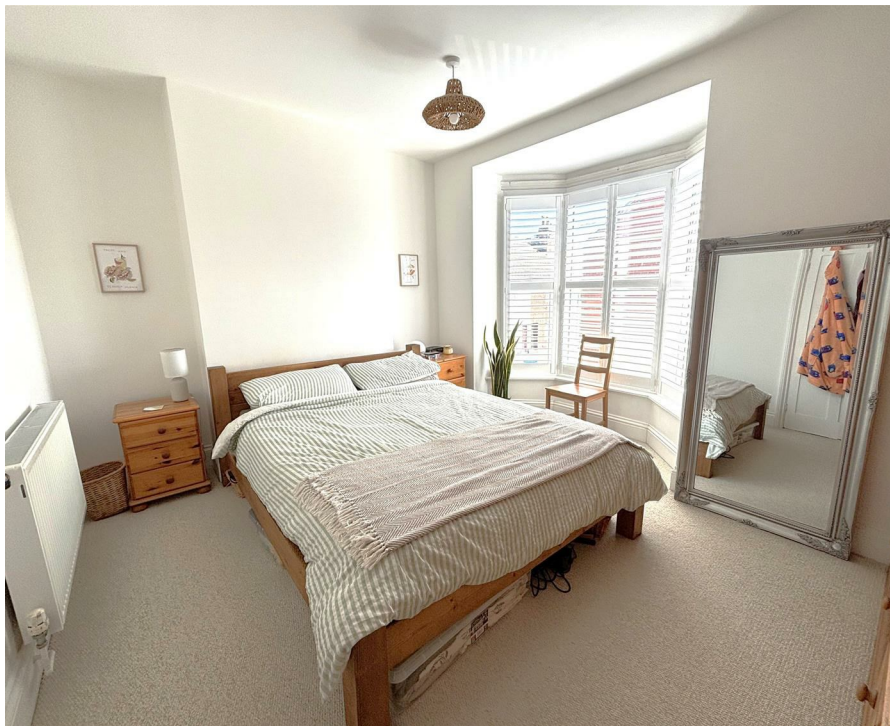
The first floor offers a split level landing area with access the loft. Doors from the landing lead through to the two bedrooms and family bathroom. Bedroom one is a generous sized double offering a front aspect double glazed bay window, wall mounted radiator and plenty of space for additional bedroom furniture. Bedroom two is also a double offering a rear aspect double glazed window, wall mounted radiator and also space for bedroom furniture. Heading back to the landing, a further door opens into the bathroom, with double glazed rear aspect window. The bathroom consists of a generous walk in shower, low level WC, free standing roll top bath, wash hand basin with storage and airing cupboard that houses the gas fired boiler.



Outside, the property boasts a generous, enclosed rear garden. A decked area directly abuts the house, leading onto a low-maintenance garden mainly laid with artificial grass, and a modern patio at the far end ideal for outdoor dining and entertaining. There is also an additional patio area to the side of the property, perfect for potted plants or extra storage. The garden further benefits from an external water supply.



The property is well located with amenities nearby. There is a Londis convenience store and Pharmacy a little further down on Abbotsbury Road. Weymouth town centre and harbour is within walking distance. The Marsh offers a lovely open green space nearby for walks and Weymouth swimming pool is also close-by. This is an excellent school catchment area with good primary and secondary schools within easy reach.



Rating Authority: - Dorset (Weymouth & Portland) Council.
Council Tax Band B.



Services: - Mains gas, electric & drainage.

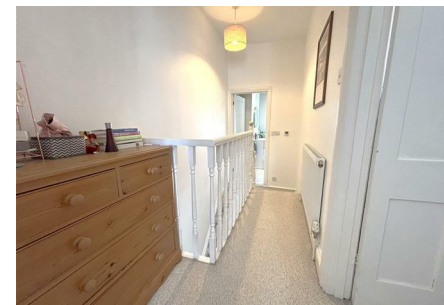
Agents Notes:- The loft room is an eaved room and measurements have been taken at it's maximum

Disclaimer: - Beaumont Jones and their clients have no authority to make or give any representations or warranties in relation to the property. These particulars do not form part of any offer or contract and must not be relied upon as statements or representations of fact. Any areas, measurements or distances are approximate. The text, photographs, plans and measurements are for guidance only and are not necessarily comprehensive. It should be assumed that the property has all necessary Planning, Building Regulations or other consents, and Beaumont Jones have not tested any services, equipment or facilities.

Beaumont Jones is a member of The Property Ombudsman scheme and subscribe to The Property Ombudsman Code of Practice.



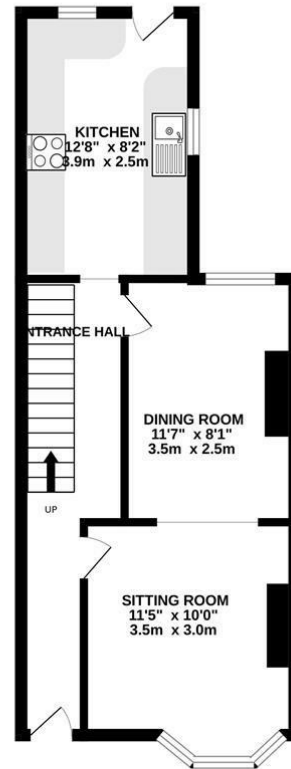
Within walking distance of the town centre and Weymouth Marina.



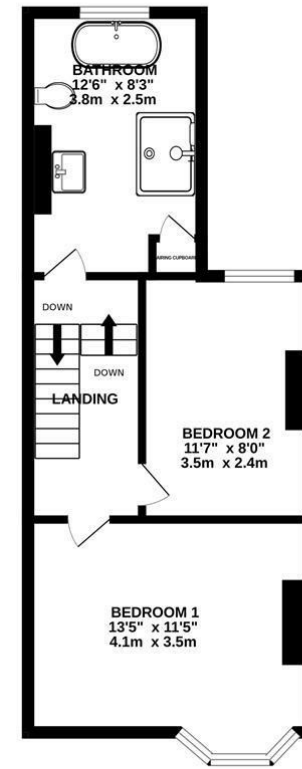


Energy Efficiency Rating		
	Current	Potential
Very energy efficient - lower running costs		
(92 plus) A		
(81-91) B		
(69-80) C		
(55-68) D		
(39-54) E		
(21-38) F		
(1-20) G		
Not energy efficient - higher running costs		
England & Wales	EU Directive 2002/91/EC	

GROUND FLOOR
381 sq.ft. (35.4 sq.m.) approx.



1ST FLOOR
387 sq.ft. (36.0 sq.m.) approx.



TOTAL FLOOR AREA : 768 sq.ft. (71.4 sq.m.) approx.

Whilst every attempt has been made to ensure the accuracy of the footprints contained here, measurements of doors, windows, rooms and any other items are approximate and no responsibility is taken for any error, omission or mis-statement. This plan is for illustrative purposes only and should be used as such by any prospective purchaser. The services, systems and appliances shown have not been tested and no guarantee as to their operability or efficiency can be given.
Made with Metropix ©2025

We value more than your property

33 St Thomas Street
Weymouth
Dorset
DT4 8EJ
01305 787434
sales@beaumontjones.co.uk
www.beaumontjones.co.uk