



**Pilgrims Way, Detling, Maidstone, Kent, ME14 3JY**  
**Offers In Excess Of £575,000**



**\*\* GUIDE PRICE £575,000 - £600,000 \*\*** Occupying a generous plot in a beautiful location along the Pilgrims Way on the periphery of Detling village, is this four bedroom detached family home.

On the ground floor is a spacious sitting room with bay window to the side which overlooks the garden. The generous dual aspect dining room gives access to a terrace via French doors, and boasts far reaching views looking South. The well-proportioned dual aspect kitchen benefits from plenty of cupboard space and work-surfaces and has a handy internal door leads to the garage. The ground floor accommodation is completed by a spacious family bathroom with the advantage of both bath and separate shower.

The first floor provides access to the exceptionally generous principal bedroom which boasts an en-suite shower and a basin. Bedroom two and three are both good size doubles also, whilst the fourth can be used as a single bedroom or a study. A W.C. serves all bedrooms and with some re-modelling, could become a wonderful family bathroom, utilising some of the space in the principal.

Externally there is a large south-west facing garden perfect for any sun-lovers and keen gardeners. The spacious driveway provides ample space for multiple vehicles, perfect for a large or growing family. The property is being sold with the significant advantage of NO FORWARD CHAIN.

Tenure: Freehold. Council tax band: F. EPC Rating: D.



## LOCATION

The area boasts superb schools and is situated within close proximity of the North Downs, Horish Wood, Pilgrims Way and Thurnham Castle; ideal for those who enjoy country walks. The property is situated on a quiet road in Detling Village and is also a short distance from Bearsted Village. It is within easy reach of both the M20 and M2 Motorways, Bearsted mainline station is just one mile away providing convenient access into London. Detling Village has a shop, playground, pub, church, village hall, woods and a cricket ground.

## ACCOMMODATION

### GROUND FLOOR

Entrance hall

Sitting room

Dining room

Kitchen

Bathroom

### FIRST FLOOR

Landing

Bedroom one

Bedroom two

Bedroom three

Bedroom four

### EXTERNALLY

Driveway

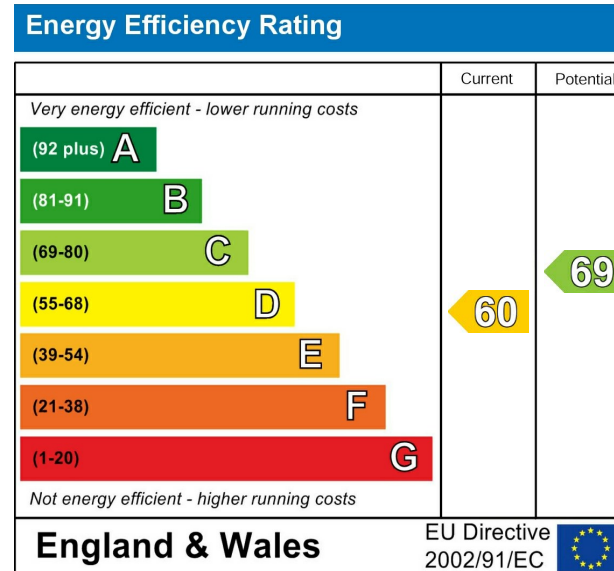
Garage

Balcony

Rear garden

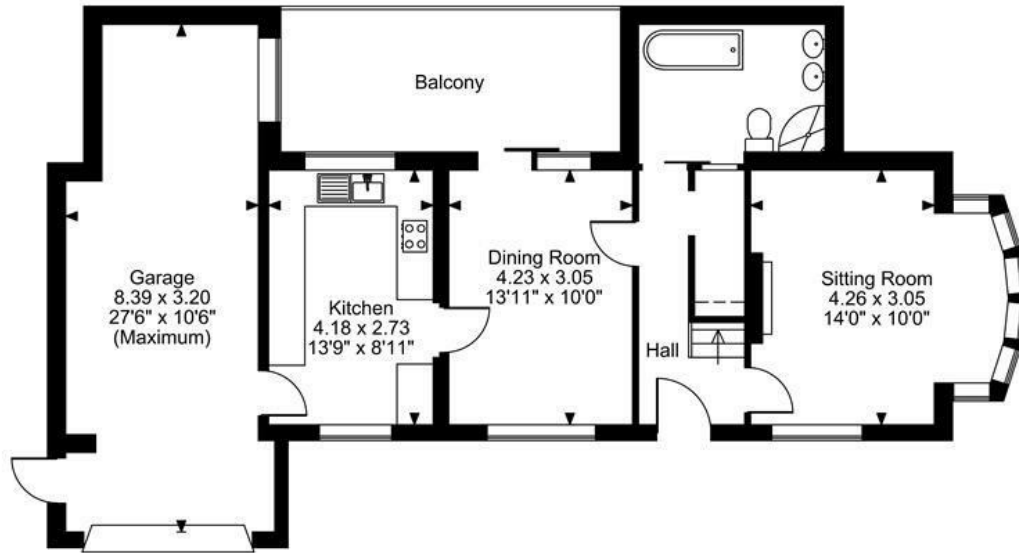
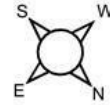
### Viewings

Strictly by arrangement with the Agent's Bearsted Office, 132 Ashford Road, Bearsted, Maidstone, Kent ME14 4LX. Tel: 01622 739574.

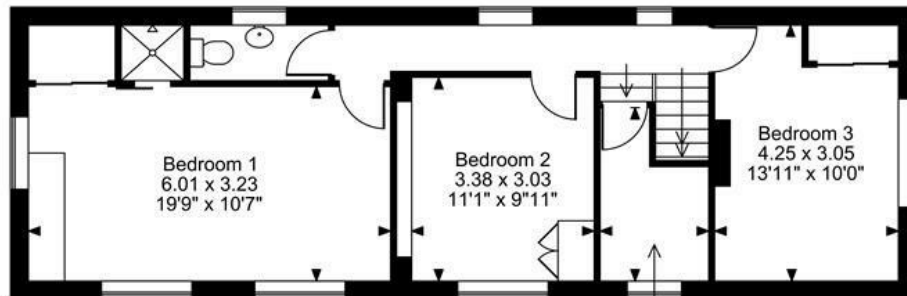


Page & Wells limited for themselves and for the vendors of this property whose agents they are give notice that: 1. These particulars do not constitute any part of, an offer or a contract. 2. All statements contained in these particulars as to this property are made without responsibility on the part of Page & Wells Limited or the Vendor. 3. None of the statements contained in these particulars as to the property is to be relied on as statements or representations of fact. 4. Any intending purchaser must satisfy himself by inspection or otherwise as to the correctness of each of the statements contained in these particulars. 5. The vendor does not make or give, and neither Page & Wells Limited nor any person in their employment has any authority to make or give any representation whatsoever in relation to this property. These particulars are supplied on the understanding that all negotiations are carried out throughout Page & Wells Limited. Properties with a reference prefixes EAA are those which Page & Wells Limited disclose an interest in accordance with the provisions of the Estates Agents Act 1979

Pilgrims Way, Detling, Maidstone  
 Approximate Gross Internal Area  
 Main House = 1279 Sq Ft/119 Sq M  
 Garage = 278 Sq Ft/26 Sq M  
 Total = 1557 Sq Ft/145 Sq M



Ground Floor



First Floor

FOR ILLUSTRATIVE PURPOSES ONLY - NOT TO SCALE

The position & size of doors, windows, appliances and other features are approximate only.

© ehouse. Unauthorised reproduction prohibited. Drawing ref. dig/8697024/LCO

