



: £ 719,995

**THE HAWTHORNE, SOWTERS LANE, BURTON-ON-THE-WOLDS,
MIDDERBURY**

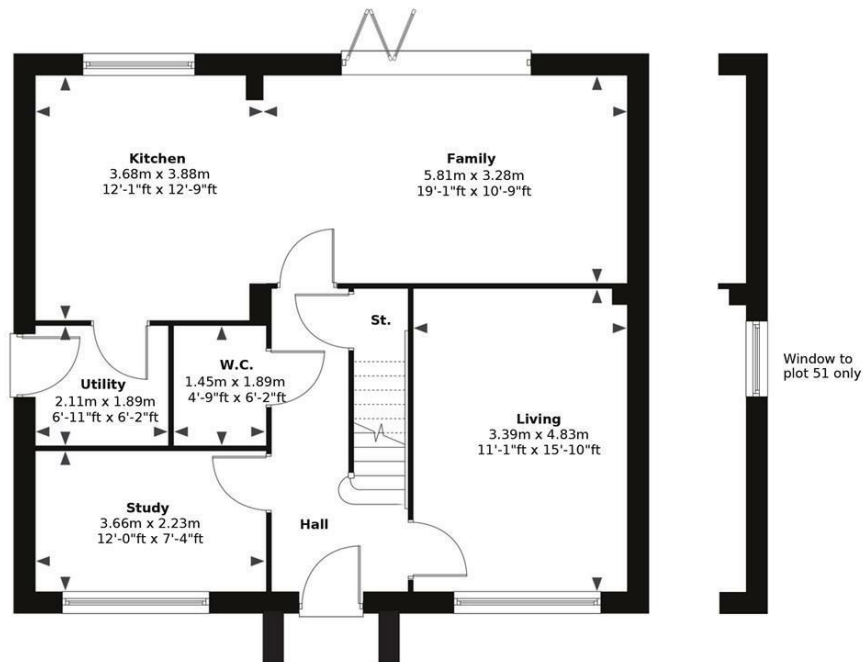






The Hawthorne – Spacious Elegance Across Three Floors. The Hawthorne is a striking five-bedroom detached residence that combines architectural charm with exceptional versatility. Designed over three floors, it provides expansive living spaces, stylish finishes, and a layout that adapts beautifully to the demands of modern family life.

GROUND FLOOR



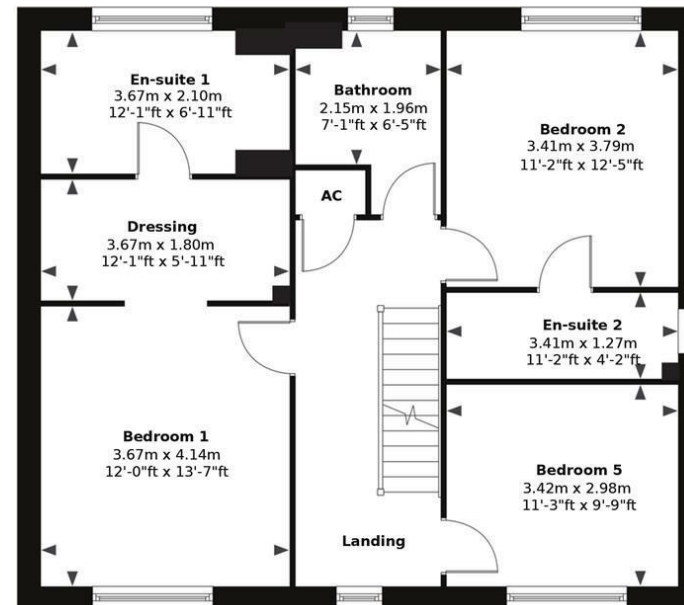
Ground Floor – Style, Comfort & Flexibility

From the moment you step into the welcoming hallway, The Hawthorne sets the tone for generous proportions and thoughtful design. To the front, a dedicated study (3.66m x 2.23m) offers the perfect work-from-home space, while the elegant living room (3.39m x 4.83m) creates a refined retreat, ideal for both entertaining and relaxing evenings. At the rear, the home opens into a superb kitchen (3.68m x 3.88m) and expansive family area (5.81m x 3.28m), the true heart of the house. Designed with entertaining in mind, this open-plan space is flooded with natural light and features French doors that lead directly onto the garden. A practical utility room (2.11m x 1.89m) and guest WC complete the floor, ensuring convenience for everyday living.

First Floor – Luxury & Privacy

The first floor is designed to provide a perfect balance of elegance and privacy. The master suite (3.67m x 4.14m) is a genuine highlight, complete with its own dressing area (3.67m x 1.80m) and a stylish en-suite bathroom (3.67m x 2.10m), creating a private sanctuary for relaxation. A second double bedroom (3.41m x 3.79m) also benefits from its own en-suite shower room (3.41m x 1.27m), making it ideal for guests or older children. The floor is further complemented by a well-proportioned fifth bedroom (3.42m x 2.98m) and a family bathroom, perfectly equipped to meet the needs of busy households.

FIRST FLOOR

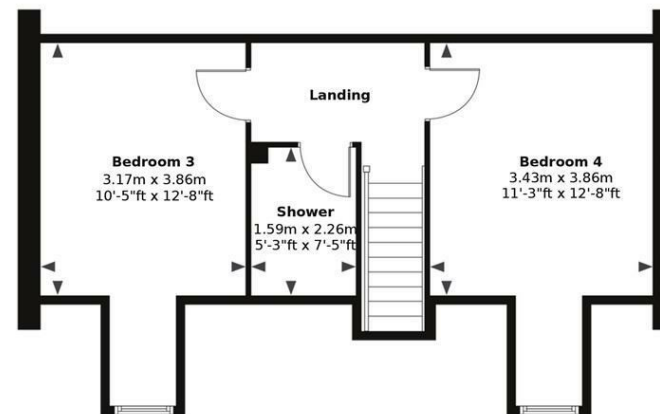




SECOND FLOOR

Second Floor – A Versatile Top Level

The Hawthorne's third level adds an extra layer of flexibility. Here you'll find two further spacious double bedrooms — Bedroom 3 (3.17m x 3.86m) and Bedroom 4 (3.43m x 3.86m) — both beautifully proportioned and full of natural light. A central shower room completes the floor, making this level ideal for teenagers, guests, or even a private retreat for extended family.



A Home Designed for Every Chapter of Life

With its five bedrooms arranged across three floors, The Hawthorne is the perfect home for growing families and those who need space to live, work, and entertain in style. From the dedicated study and open-plan family hub on the ground floor, to the luxurious master suite and versatile upper bedrooms, every detail has been carefully considered to offer comfort, elegance, and flexibility.

SHOW HOME
Larkspur
Plot 2

2 & 3 BEDROOM HOMES

- WOLDSWOOD**
2 BEDROOM HOME - PLOTS 39, 40, 58, 59
- THORNLEIGH**
2 BEDROOM HOME - PLOTS 16, 19, 20, 21, 24
- MAPLEHURST**
2 BEDROOM BUNGALOW - PLOTS 64, 65
- MEADOWCROFT**
2 BEDROOM BUNGALOW - PLOT 52
- BURTONLEY**
3 BEDROOM BUNGALOW - PLOT 53
- ROSEMEAD**
3 BEDROOM HOME - PLOTS 15, 17, 18, 22, 23, 29, 30
- ELMBRIDGE**
3 BEDROOM HOME - PLOTS 7, 10, 37, 38, 56, 57
- ASHBOURNE**
3 BEDROOM HOME - PLOTS 3, 4, 6, 9, 32
- OAKFIELD**
3 BEDROOM HOME - PLOT 66
- LARKSPUR**
3 BEDROOM HOME - PLOTS 2, 5, 8, 13

4 BEDROOM HOMES

- HAZELTON**
4 BEDROOM HOME - PLOTS 41, 45, 54, 55
- WILLOWMERE**
4 BEDROOM HOME - PLOT 33

5 BEDROOM HOMES

- BRAMBLETON**
5 BEDROOM HOME - PLOTS 47, 49
- HAWTHORNE**
5 BEDROOM HOME - PLOTS 1, 34, 35, 36, 51
- CEDARVALE**
5 BEDROOM HOME - PLOTS 42, 43, 44, 46, 48, 50

A HOME TO SUIT YOU

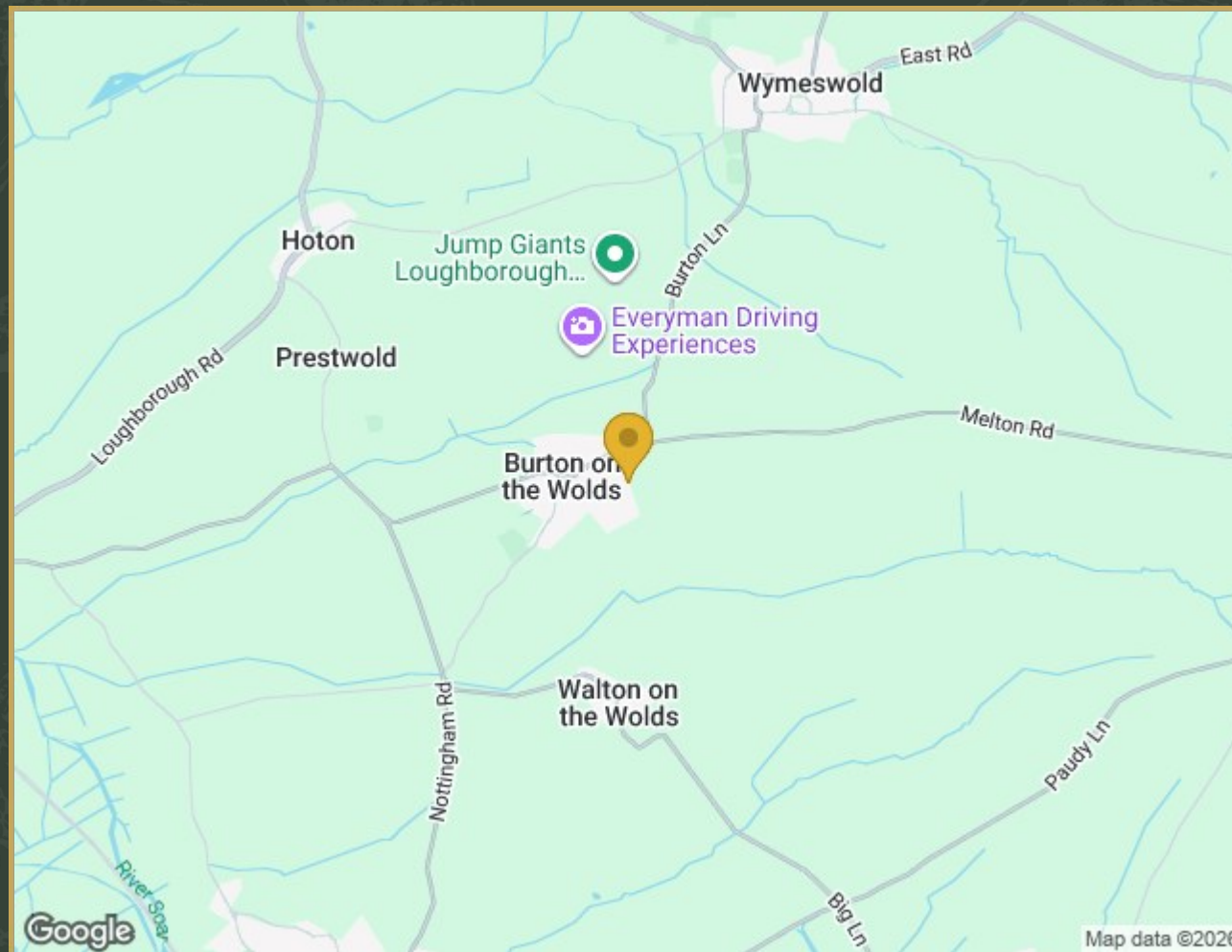


This information is for illustrative general guidance only.
Computer generated image, details may vary.
The location of affordable homes is indicative and may change.

Set within a thoughtfully planned development surrounded by open green spaces and a welcoming community, The Hawthorne offers more than just a home — it delivers a lifestyle of space, comfort, and contemporary charm.



Property Location



The Hawthorne Sowters Lane, Burton-On-The-Wolds, Loughborough,
Leicestershire, LE12 5TS

