



Linton Road, Loose, Maidstone, ME15 0AG
Offers In Excess Of £575,000

IMPRESSIVE ATTACHED PERIOD HOME WITH FABULOUS VIEWS OVER THE LOOSE CONSERVATION AREA

An attractive ragstone-built detached home occupying a highly regarded position on Linton Road in Loose, offering spacious and versatile accommodation arranged over three floors. Full of character and individuality, the property extends to approximately 1,966 sq ft including the garage, detached office and balcony, making it an ideal family home for those seeking both charm and practicality.

The ground floor features a generous lounge, a spacious kitchen/breakfast room with ample room for everyday dining, and a bright dining room/conservatory overlooking the garden, creating an excellent space for entertaining or family gatherings. A cloakroom completes the ground floor accommodation.

To the first floor are three bedrooms, including a particularly generous principal bedroom, together with a family bathroom and access onto a balcony. The second floor offers an impressive fourth bedroom with en-suite facilities, ideal as a principal suite, guest accommodation or a private space for an older child.

Externally, the rear garden is a real feature of the home, being beautifully maintained with lawn and patio areas that enjoy a sunny aspect and provide excellent space for outdoor dining and relaxation. There is also the added benefit of a parking, garage and separate office, perfect for home working, hobbies or additional storage.

Loose remains one of Maidstone's most desirable locations, known for its village feel, countryside walks, reputable schools and convenient access to the town centre, mainline stations and motorway links.

A distinctive home in a prime setting, offering character, space and flexibility. Viewing is highly recommended. Call Page and Wells Loose Office today.



GROUND FLOOR

Entrance Hall 17'2" x 8'0" (5.25m x 2.45m)

Lounge 14'11" x 13'0" (4.56m x 3.97m)

Kitchen 21'9" x 11'5" (6.64m x 3.48m)

Dining Room/Conservatory 13'3" x 11'0" (4.06m x 3.37m)

Family Bathroom

FIRST FLOOR

Bedroom 1 16'9" x 13'2" (5.11m x 4.02m)

Bedroom 2 13'2" x 7'11" (4.03m x 2.42m)

Bedroom 3 12'0" x 8'1" (3.67m x 2.48m)

WC

SECOND FLOOR

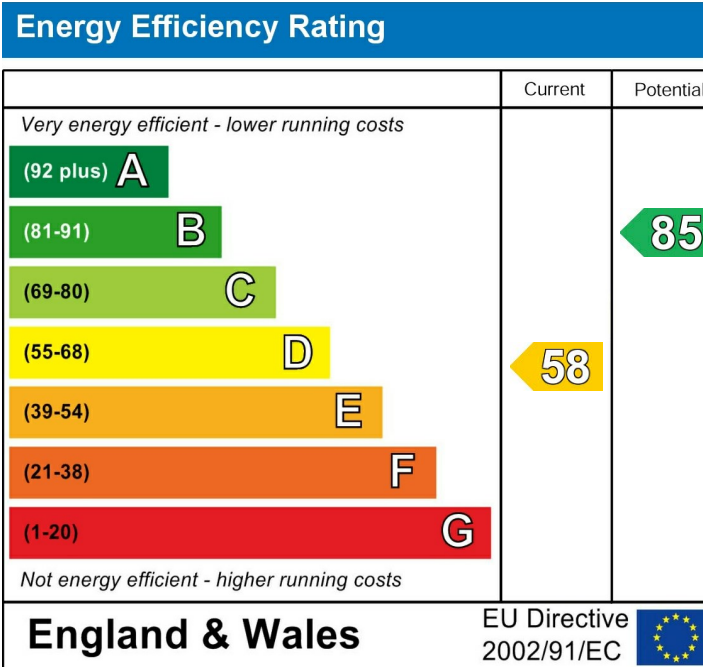
Bedroom 4 16'6" x 15'7" (5.05m x 4.77m)

En-Suite

EXTERNALLY

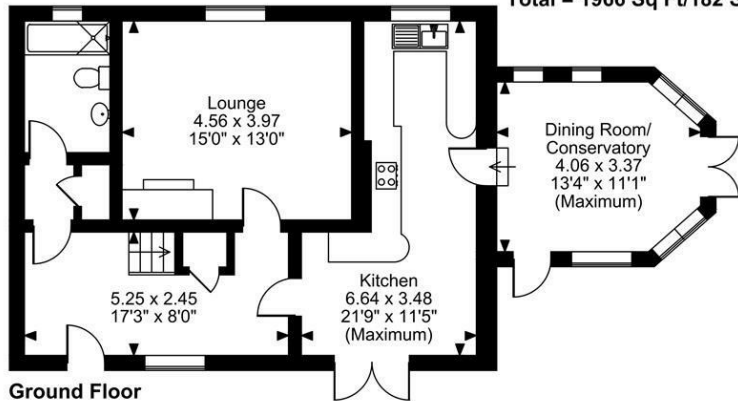
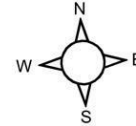
Garage 18'8" x 8'0" (5.70m x 2.46m)

Office 15'6" x 9'1" (4.73m x 2.79m)

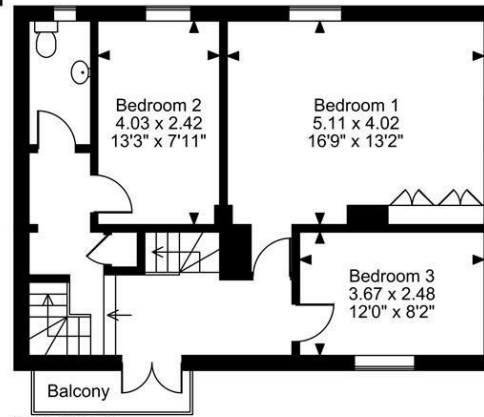


Page & Wells limited for themselves and for the vendors of this property whose agents they are give notice that: 1. These particulars do not constitute any part of, an offer or a contract. 2. All statements contained in these particulars as to this property are made without responsibility on the part of Page & Wells Limited or the Vendor. 3. None of the statements contained in these particulars as to the property is to be relied on as statements or representations of fact. 4. Any intending purchaser must satisfy himself by inspection or otherwise as to the correctness of each of the statements contained in these particulars. 5. The vendor does not make or give, and neither Page & Wells Limited nor any person in their employment has any authority to make or give any representation whatsoever in relation to this property. These particulars are supplied on the understanding that all negotiations are carried out throughout Page & Wells Limited. Properties with a reference prefixes EAA are those which Page & Wells Limited disclose an interest in accordance with the provisions of the Estates Agents Act 1979

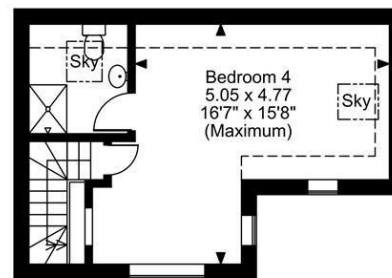
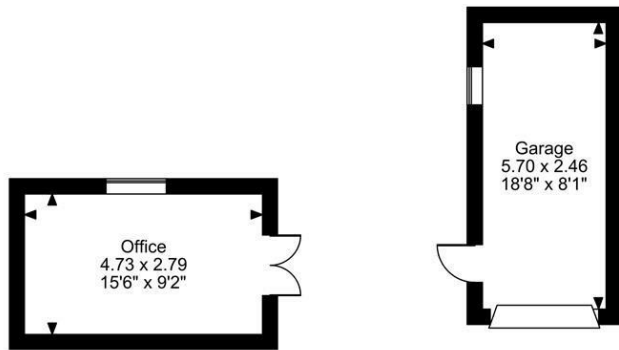
Linton Road, Loose, Maidstone
Approximate Gross Internal Area
Main House = 1673 Sq Ft/155 Sq M
Garage = 151 Sq Ft/14 Sq M
Office = 142 Sq Ft/13 Sq M
Balcony external area = 28 Sq Ft/3 Sq M
Total = 1966 Sq Ft/182 Sq M



Ground Floor



First Floor



Second Floor

FOR ILLUSTRATIVE PURPOSES ONLY - NOT TO SCALE

The position & size of doors, windows, appliances and other features are approximate only.
 © ehouse. Unauthorised reproduction prohibited. Drawing ref. dig/8685525/LCO

