



Guide Price
£270,000

Freehold

3x  1x  1x 

**Holywell Avenue,
Folkestone, Kent, CT19**

OVER 60?

Secure this property
for up to **59% less!**

Wards
Helping you move forwards



Main features

- Chain free
- Generous landscaped rear garden with side access
- Immaculately presented throughout
- Open plan lounge diner with doors opening to garden
- Three good sized bedrooms, main bathroom with downstairs toilet

Accommodation

GROUND FLOOR

Hallway
Lounge/Diner: 21'4 x 11'0 (6.51m x 3.36m)
Kitchen: 10'6 x 8'10 (3.20m x 2.69m)
Cloakroom

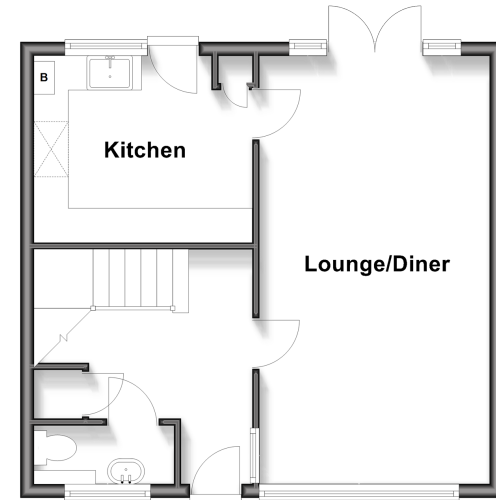
FIRST FLOOR

Landing
Bedroom 1: 15'2 x 9'3 (4.63m x 2.82m)
Bedroom 2: 15'2 x 10'9 (4.63m x 3.28m)
Bedroom 3: 10'6 x 9'1 (3.20m x 2.77m)
Bathroom

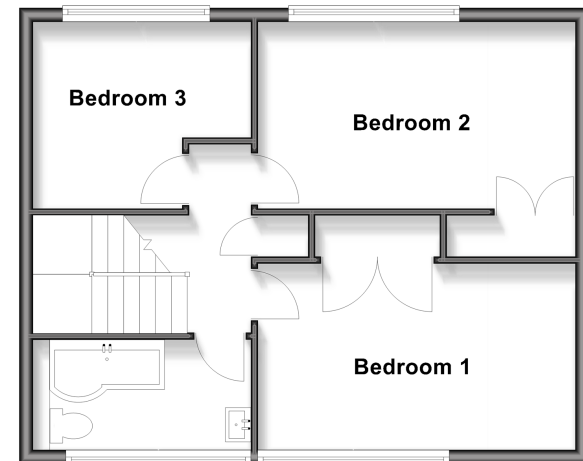
OUTSIDE

Rear Garden

Ground Floor
Approx. 41.4 sq. metres (445.3 sq. feet)



First Floor
Approx. 48.9 sq. metres (526.8 sq. feet)



Call Folkestone - 01303 256505 ■ wardsof Kent.co.uk

- Legal advice should be taken to verify fixtures/fittings, planning, alterations and/or lease details
- Appliances & services are untested, dimensions are approximate and floor plans are not to scale
- Through a Homewise Home For Life Plan people aged 60+ can secure this property for up to 50% less, by purchasing a Lifetime Lease.



12638249/20250924/ET/LS1