

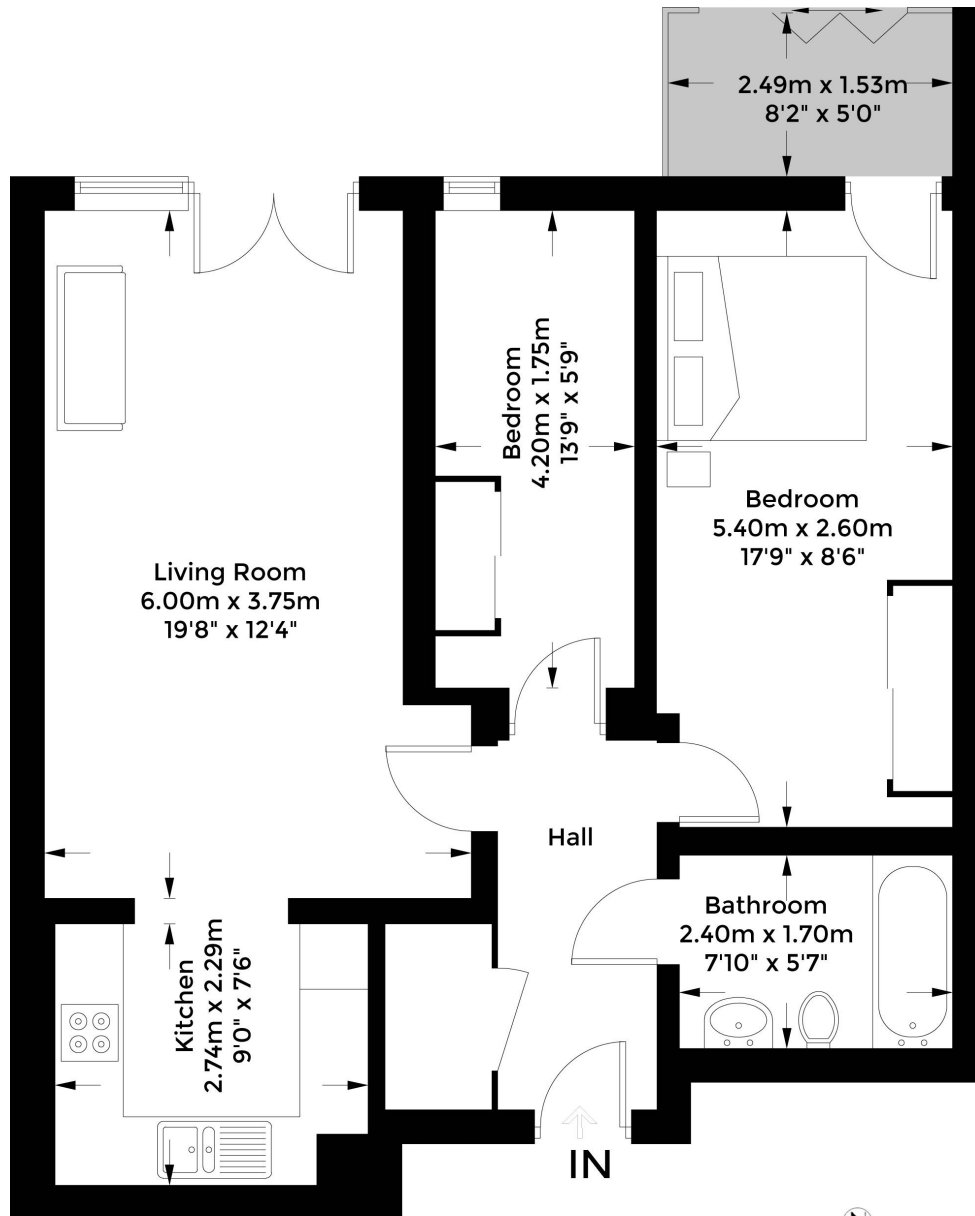


## BEACON POINT, SE10

£500,000

An amazing 1 bed+ study/guest room apartment available with fantastic river view, this 6th floor apartment. This apartment has a bright and spacious reception / dining room with balcony access, open-plan kitchen, master bedroom, study/guest room, both with built in wardrobes and a separate 3 piece bathroom.

- 24 HR Concierge
- Video Entry System
- Service Charge: £4,019.26
- Ground Rent: £350



## Sixth Floor

Approximate Gross Internal Area = 63.6 sq m / 684 sq ft

### LiFE RESIDENTIAL

6 Victoria Parade, London,  
SE10 9FR  
Sales: 020 8446 2521  
Lettings: 020 8418 3609

Energy Rating: B. We aim to make our particulars both accurate and reliable. However they are not guaranteed; nor do they form part of an offer or contract. If you require clarification on any points then please contact us, especially if you're traveling some distance to view. Please note that appliances and heating systems have not been tested and therefore no warranties can be given as to their good working order.