

# The Coach House

164 Rockbourne Road  
Sherfield on Loddon  
£355,000

**A modern, detached freehold Coach House offering  
1272sq.ft in sought-after Sherfield Park**



GAYE HACKING  
HOMES LTD

Guiding you home  
with honesty and integrity



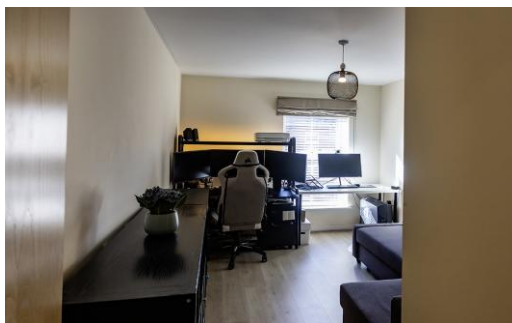
**Gayehacking** Director

01256 578098

07521 930870

enquiries@gayehacking.homes

[www.gayehacking.homes](http://www.gayehacking.homes)



- Well-presented, detached freehold two-bedroom coach house
- 1272 sq. ft.
- Bright, spacious open-plan living, kitchen and dining area
- Water softener, integrated fridge / freezer and dishwasher
- Main bedroom with en-suite and built-in wardrobe
- Second double bedroom
- Separate utility room for laundry and storage
- Single garage plus a parking space
- Peaceful courtyard setting location
- Sought-after Sherfield Park
- Excellent rail links to London
- Easy access to A33 and M3
- EPC C
- Council tax C