



THE TOWER, SW8

£6,000 pcm

Exceptional interior designed two bedroom apartment with panoramic Thames views. Open plan living, marble bathrooms, indoor garden and premium finishes. World class amenities inc. Pool, spa, cinema and 24hr Harrods Estates concierge.

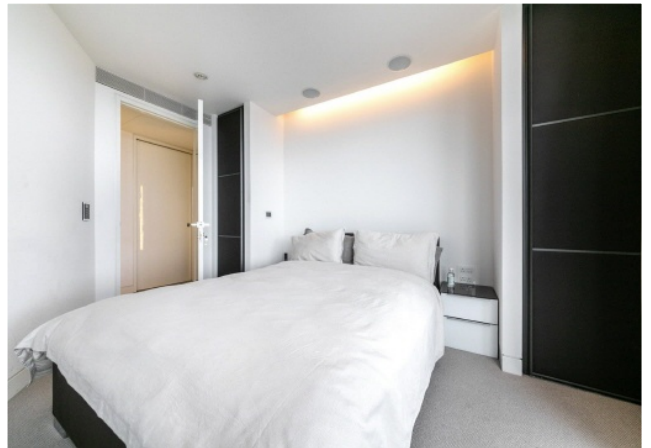
- Modern Interior Designed
- Open Plan Living Space
- Two Bathrooms
- 24 Hour Concierge
- Residents' Gym and Cinema
- Residents' Swimming Pool



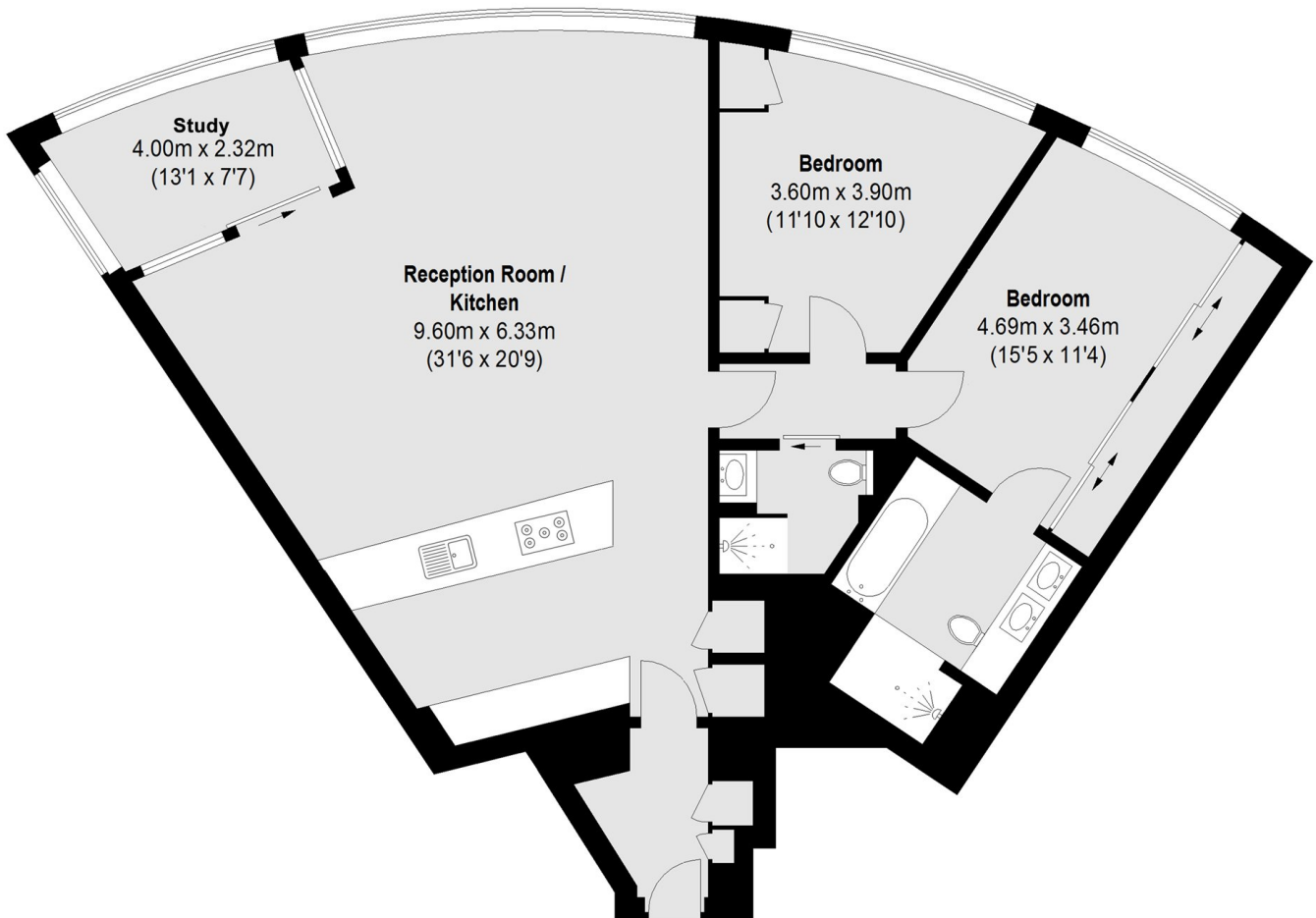
ABOUT THE HOME

Light, spacious and exceptionally well finished throughout. The open plan reception and kitchen connect naturally to a winter garden, and two well proportioned double bedrooms, the principal with en-suite. Floor to ceiling windows, mood lighting and a cooling system add to the comfort. Residents also benefit from 24-hour concierge, valet parking, a well equipped gym, pool, landscaped gardens and a business lounge.

Situated in Nine Elms, one of London's most exciting regeneration zones. Steps from Vauxhall Station (Victoria line, Zone 1), with Battersea Power Station, the South Bank & riverside dining all on the doorstep.







Total area (approx.): 111.0 sq. m (1195 Sq. ft)

LiFE RESIDENTIAL

11 Flagstaff House, London,
SW8 2LZ

Sales: 020 7476 1408

Lettings: 020 7582 7989

Energy Rating: B. We aim to make our particulars both accurate and reliable. However they are not guaranteed; nor do they form part of an offer or contract. If you require clarification on any points then please contact us, especially if you're traveling some distance to view. Please note that appliances and heating systems have not been tested and therefore no warranties can be given as to their good working order.