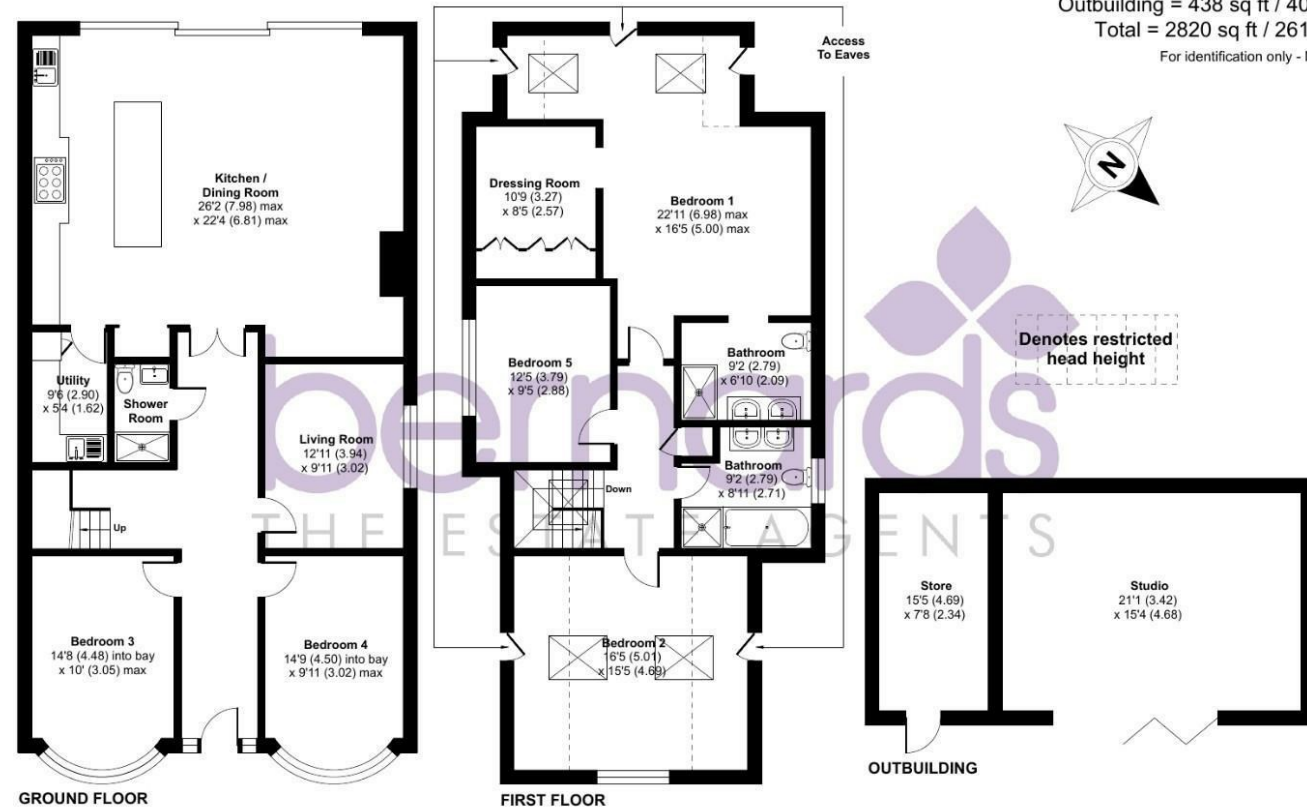
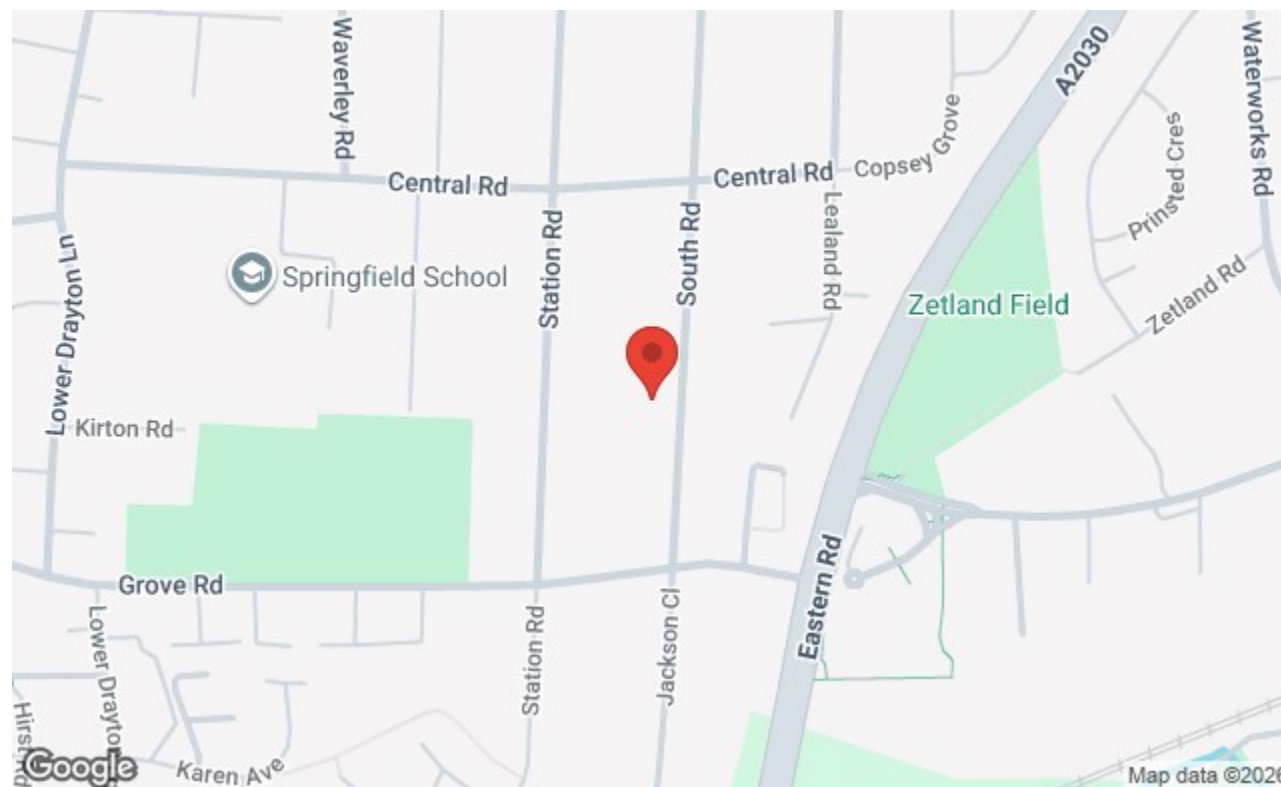


South Road, Drayton, Portsmouth, PO6

Approximate Area = 2227 sq ft / 206.8 sq m
 Limited Use Area(s) = 155 sq ft / 14.3 sq m
 Outbuilding = 438 sq ft / 40.6 sq m
 Total = 2820 sq ft / 261.7 sq m
 For identification only - Not to scale



Floor plan produced in accordance with RICS Property Measurement 2nd Edition, Incorporating International Property Measurement Standards (IPMS2 Residential). © nichicom 2026. Produced for Bernards Estate and Letting Agents Ltd. REF: 1406803



The Old Loos, 119 Lower Drayton Lane, Portsmouth, PO6 2EL
 t: 02392 728 091



Offers In Excess Of £675,000

South Road, Portsmouth PO6 1QD

bernards
 THE ESTATE AGENTS



HIGHLIGHTS

- ❖ FIVE BDEROOMS
- ❖ DETACHED
- ❖ CHALET SYTLE
- ❖ OPEN PLAN KITCHEN/DINER
- ❖ SEPRATE LOUNGE
- ❖ DOWNSTAIRS SHOWER ROOM
- ❖ EN-SUITE AND DRESSING ROOM
- ❖ GARDEN STUDIO
- ❖ OFF ROAD PARKING
- ❖ ONE NOT TO BE MISSED

Nestled on South Road in the charming area of Drayton, this impressive detached chalet-style bungalow offers a perfect blend of comfort and modern living. With five spacious bedrooms, this home is ideal for families seeking ample space and versatility. The master bedroom is a true retreat, featuring an en-suite bathroom and a dressing room, ensuring privacy and convenience.

The property boasts two well-appointed reception rooms, providing plenty of room for relaxation and entertaining. The heart of the home is undoubtedly the kitchen diner and family room, which is enhanced by the luxury of wet underfloor heating, creating a warm and inviting atmosphere. Additionally, a downstairs shower room and a utility

room add to the practicality of this delightful residence.

For those who require connectivity, the entire house is equipped with wired Cat6 internet, ensuring fast and reliable access. The garden studio also benefits from wired internet, making it an excellent space for work or leisure.

Outside, the property offers parking for two vehicles, a valuable feature in this desirable location. The combination of spacious living areas, modern amenities, and a convenient layout makes this bungalow a wonderful opportunity for anyone looking to settle in Drayton. With its thoughtful design and prime location, this home is sure to impress.

Call today to arrange a viewing

02392 728 091

www.bernardsestates.co.uk



PROPERTY INFORMATION

- ENTRANCE HALL
- KITCHEN/DINER
26'2" x 22'4" (7.98 x 6.81)
- UTILITY ROOM
9'6" x 5'3" (2.90 x 1.62)
- LIVING ROOM
12'11" x 9'10" (3.94 x 3.02)
- BEDROOM 3
14'8" x 10'0" (4.48 x 3.05)
- BEDROOM 4
14'9" x 9'10" (4.50 x 3.02)
- SHOWER ROOM
- LANDING
- BEDROOM 1
22'10" x 16'4" (6.98 x 5.00)
- EN-SUITE
9'1" x 6'10" (2.79 x 2.09)
- DRESSING ROOM
10'8" x 8'5" (3.27 x 2.57)
- BEDROOM 2
16'5" x 15'4" (5.01 x 4.68)
- BEDROOM 5
12'5" x 9'5" (3.79 x 2.88)
- BATHROOM
9'1" x 8'10" (2.79 x 2.71)
- GARDEN
- STUDIO
11'2" x 15'4" (3.42 x 4.68)
- STORE
15'4" x 7'8" (4.69 x 2.34)
- PARKING

COUNCIL TAX BAND D
The local authority is
PORTSMOUTH borough

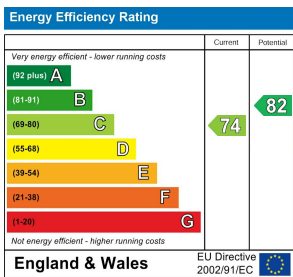
council. BAND : YEARLY
£2181

OFFER CHECK
If you are considering making an offer for this or any other property Bernard's Estate Agents are marketing, please make contact with your local office so we can verify your financial/Mortgage situation.

REMOVALS
Also here at Bernard's we like to offer our clients the complete service. In doing so we have taken the time to source a reputable removal company to ensure that your worldly belongings are moved safely. Please ask in office for further details and quotes.

SOLICITORS
Bernard's appreciate that picking a trustworthy solicitor can be difficult, so we have teamed up with a select few local solicitors to ensure your sale is dealt with in a professional and timely manner.

Please ask a member of staff for further details!



Call today to arrange a viewing
02392 728 091
www.bernardsestates.co.uk

