



## Lightsfield, Oakley - RG23 7BL

£600,000 offers over

Karndean flooring • Air conditioning unit fitted principle bedroom 2023 • Ensuite replaced April 2023 • Village location • EVC point • Solar panels & battery storage - August 2020 • Luxury fitted open plan kitchen • Separate utility room • Close to excellent local primary school

01256 321777

[www.thepropertyexplorer.co.uk](http://www.thepropertyexplorer.co.uk)

the property  
**explorer**

Located within the highly sought-after village of Oakley, this beautifully presented four-bedroom detached family home offers spacious and versatile accommodation, thoughtfully updated by the current owners to create a stylish and comfortable home ideal for modern family living. The ground floor features a generous reception room complete with a striking media wall and contemporary log burner, creating a warm and inviting living space. A separate dining room provides the perfect setting for entertaining, while the impressive kitchen/breakfast room offers excellent workspace and storage, complemented by quality Karndean flooring and a range of integrated appliances. A useful utility room, downstairs cloakroom, and integral garage complete the ground floor accommodation. Upstairs, the property benefits from four well-proportioned bedrooms. The principal suite has been cleverly reconfigured to include a dressing room and enjoys the added luxury of air conditioning and a refitted en-suite shower room. A modern family bathroom serves the remaining bedrooms. Externally, the property enjoys a private driveway, garage, and attractive rear garden, ideal for families and outdoor entertaining.



- Karndean flooring
- Air conditioning unit fitted principle bedroom 2023
- Ensuite replaced April 2023
- Village location
- EVC point
- Solar panels & battery storage - August 2020
- Luxury fitted open plan kitchen
- Separate utility room
- Close to excellent local primary school





# Lightsfield, Oakley, Basingstoke, RG23

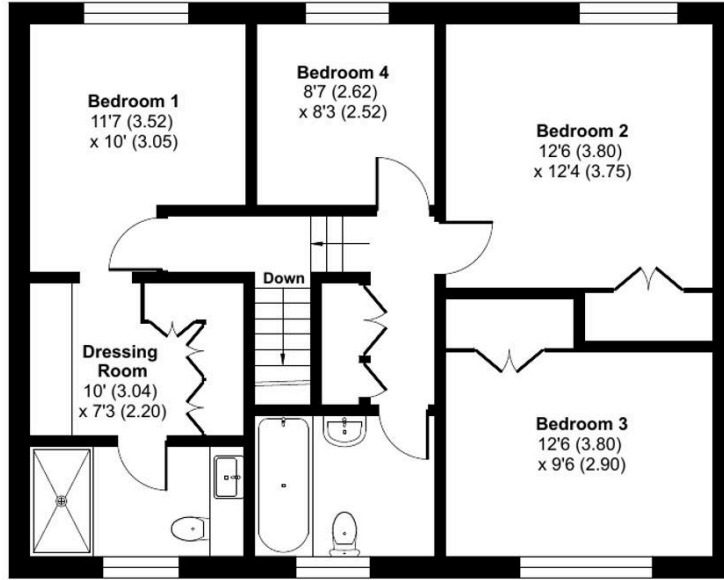


Approximate Area = 1566 sq ft / 145.4 sq m

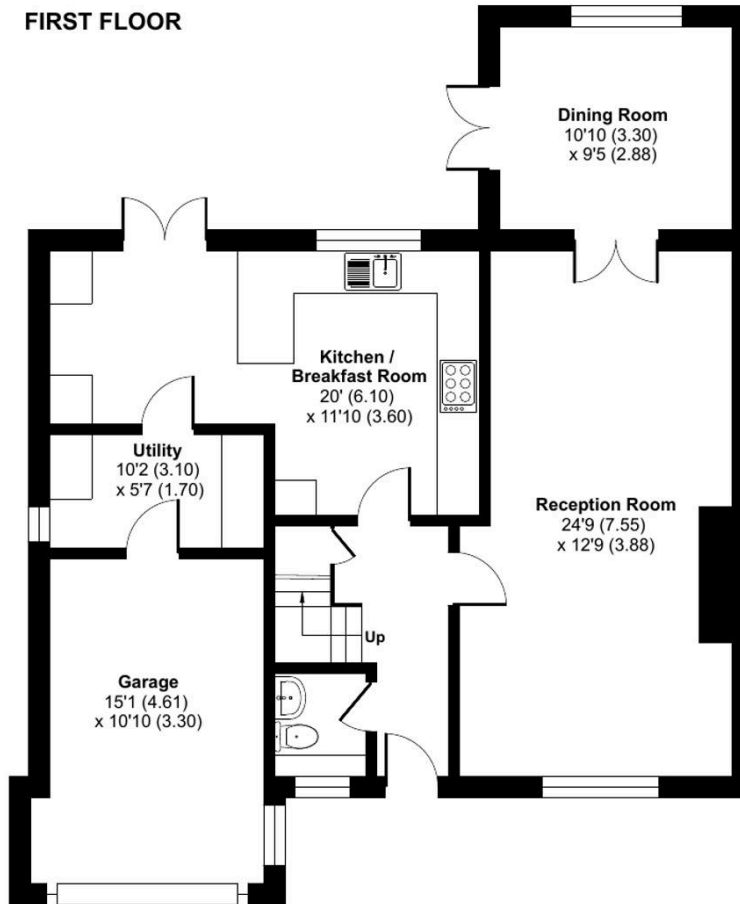
Garage = 155 sq ft / 14.3 sq m

Total = 1721 sq ft / 159.7 sq m

For identification only - Not to scale



**FIRST FLOOR**



**GROUND FLOOR**



Floor plan produced in accordance with RICS Property Measurement 2nd Edition, Incorporating International Property Measurement Standards (IPMS2 Residential). © nchecom 2026. Produced for Property Explorer. REF: 1465333