



41 Lea Crescent, Ormskirk

Ormskirk

Guide Price £187,500

41 Lea Crescent

Ormskirk, Ormskirk

Situated in a popular residential area of Ormskirk, this two-bedroom end terrace home offers generous internal space, a practical layout, and excellent potential for a range of buyers.

With well sized rooms throughout, a detached garage, and a low-maintenance rear garden, the property is perfectly suited to first-time buyers, downsizers, or investors alike.

The property is entered via a front porch, leading into a welcoming interior.

Council Tax band: B

Tenure: Freehold

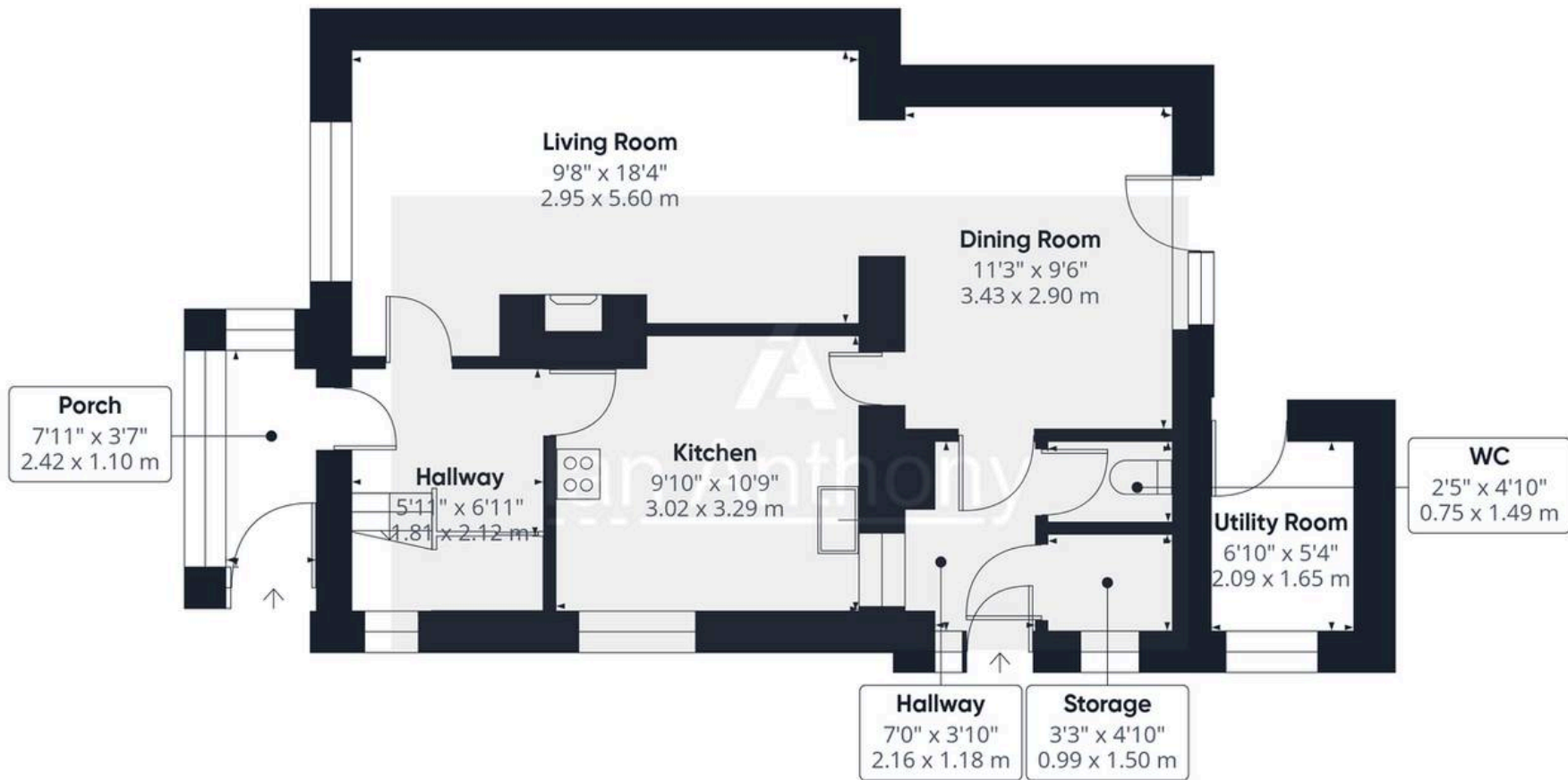
EPC Energy Efficiency Rating: D

EPC Environmental Impact Rating:

- Two bedroom end terrace home in popular Ormskirk location
- Spacious living room with separate dining room
- Downstairs WC for added convenience
- Ideal for first-time buyers
- Great potential to modernise and add value
- Detached garage offering additional storage or parking
- Low-maintenance rear garden
- Convenient for Ormskirk town centre







Approximate total area⁽¹⁾

580 ft²
53.9 m²

(1) Excluding balconies and terraces

Calculations reference the RICS IPMS 3C standard. Measurements are approximate and not to scale. This floor plan is intended for illustration only.



Ground Floor



IAN ANTHONY

5 Burscough Street, Ormskirk - L39 2EG

01695580888

enquiries@iananthonyestates.co.uk

iananthonyestates.co.uk/

