



Westbourne Terrace, W2

£1,850,000

Dexters



Westbourne Terrace, W2

This stunning, white stucco fronted property leaves a lasting impression. Located on an impressive tree-lined terrace avenue this duplex maisonette is accessed by its' own front door.

The property has been meticulously and classically refurbished to the highest of standards. On entering the property, the marble floored hall leads into a large West facing drawing room with intricate ceiling detailing and beautiful gas working marble fireplace. This in turn leads to a bespoke kitchen with a large six seater Corin and marble island which is fully integrated with modern Miele appliances. As you leave the kitchen, towards the end of the hall is a second reception room/family room.

The beautiful bespoke balustrade takes you downstairs to the bedrooms. The principal room feels luxurious with handcrafted units, a large bathroom and shower room which has access via french doors to a private decked garden.

Westbourne Terrace is an attractive tree lined street running north from Hyde Park in an area consisting of grand white stucco-fronted buildings and fashionable districts such as Westbourne Grove and Notting Hill.

Features

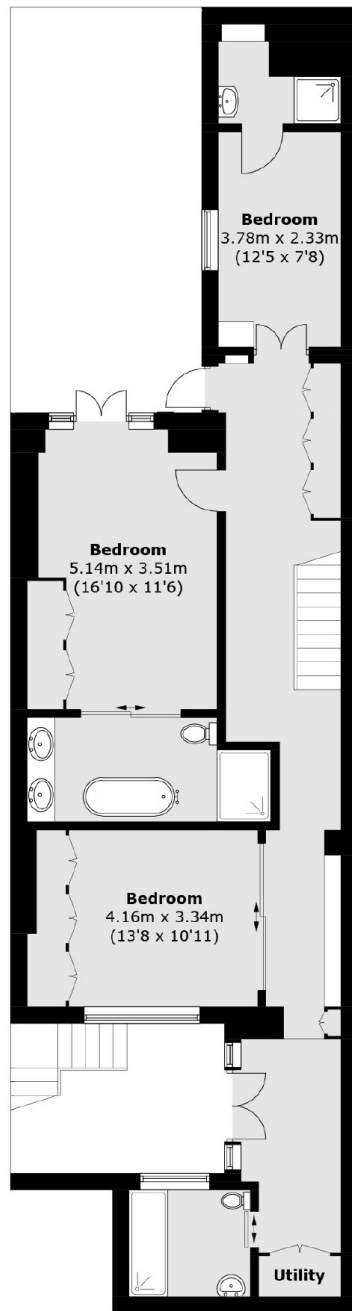
- Three Bedrooms
- Two Receptions
- Private Entrance
- Fully Refurbished
- High Ceilings
- Bespoke Fittings



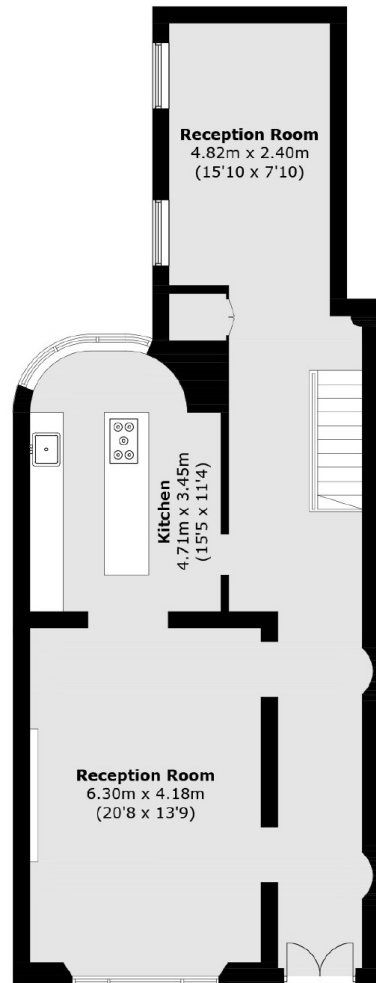




Westbourne Terrace, London, W2



Lower Ground Floor



Raised Ground Floor

Total area (approx.): 172.7 sq. m (1,859.1 sq. ft)
(Excluding Patio)