



Market Place, W1W

£1,650,000

Dexters



Market Place, W1W

A two bedroom, two bathroom loft style apartment sited on the top of a beautiful period building on Market Place, just behind Oxford Street. Features a double height living space and a long lease.

The apartments are named after George Orwell the author of the classics 1984 and Animal Farm and a regular broadcaster and reporter for the BBC who took over the building in 1942. Accounts from the time describe live broadcasts from the roof of the building during air raids over London, with detailed accounts offered from this truly unique perspective, high over Oxford Circus.

Ideally located for the boutique shops and restaurants of surrounding Marylebone, Fitzrovia, Mayfair and Soho as well as being moments from the world class shopping of Oxford Street and the West End.

Oxford Circus is just a few metres away with the Elizabeth Line located nearby at Bond Street and Tottenham Court Road.

Features

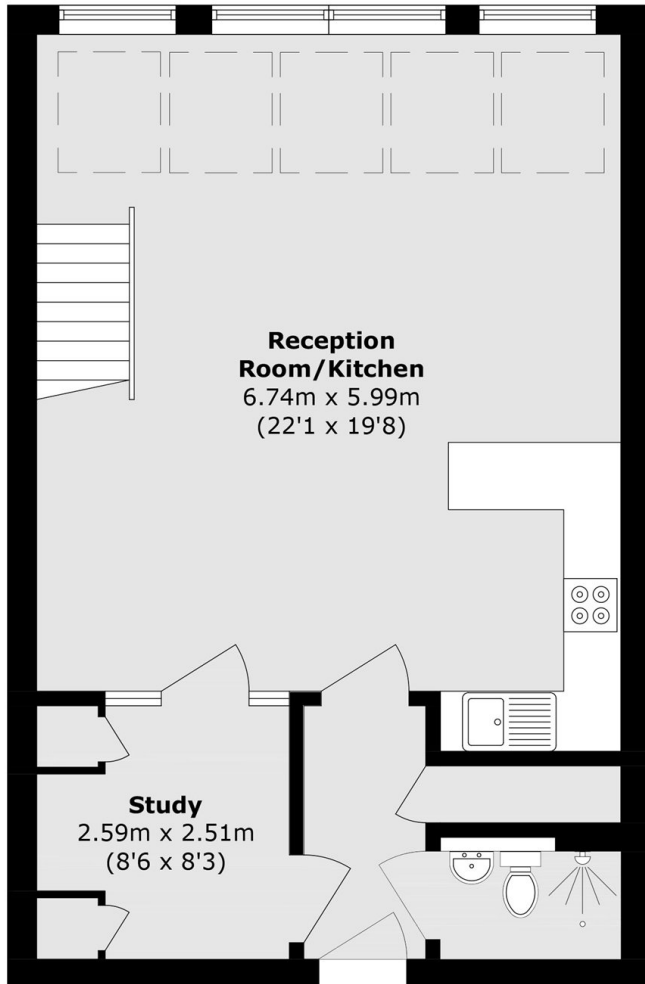
- Main Bedroom En Suite
- Second Double Bedroom
- Top Floors With Two Lifts
- Double Height Reception Room
- Southerly Facing Aspect
- Long Lease



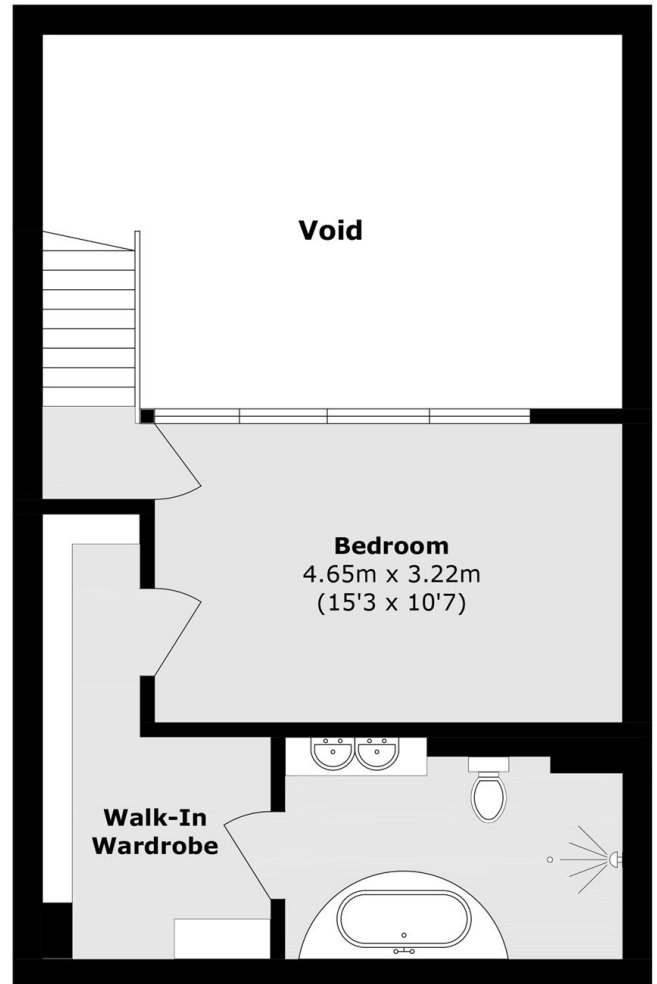




Market Place, London, W1W



Fourth Floor



Fifth Floor

Total area (approx.): 92.0 sq. m (990.2 sq. ft)