



3 Chantry Road

East Ayton, Scarborough, YO13 9EP

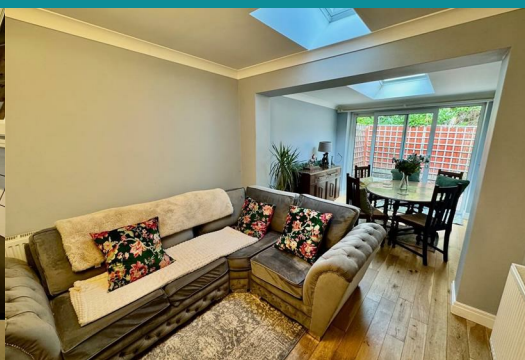
Guide Price £273,000



Situated in the sought-after village of East Ayton, Scarborough, this well-proportioned semi-detached property on Chantry Drive offers spacious and versatile accommodation arranged over two floors. East Ayton benefits from a range of local amenities including shops, schools and public transport links, together with easy access to surrounding countryside. Scarborough town centre, with its wider selection of shops, services and coastal attractions, is conveniently located nearby.

The ground floor accommodation comprises a lounge/dining room, kitchen, utility room, a ground floor bedroom and a shower room, providing flexible living options. To the first floor are four further bedrooms and a family bathroom, making the property well suited to family living.

Offered for sale with no onward chain, this property presents an excellent opportunity to acquire a substantial home in a popular village location. Call our sales office on 01723 350077 to arrange your viewing.



Hallway

Lounge 15'8" x 11'11" (4.8 x 3.65)

Lounge/Diner 22'6" x 9'9" (6.86 x 2.99)

Kitchen 15'4" x 13'8" (4.69 x 4.18)

Utility 9'1" x 8'9" (2.79 x 2.68)

Bedroom 12'7" x 9'9" (3.84 x 2.99)

Bathroom 6'11" x 5'4" (2.12 x 1.63)

Bedroom 2 11'6" x 9'9" (3.53 x 2.98)

Bedroom 3 10'5" x 8'7" (3.18 x 2.64)

Bedroom 4 14'4" x 8'4" (4.37 x 2.55)

Bedroom 5 10'9" x 7'2" (3.3 x 2.19)

Bathroom 7'11" x 5'4" (2.42 x 1.63)

Outside

With Front and rear gardens, driveway and Garage.

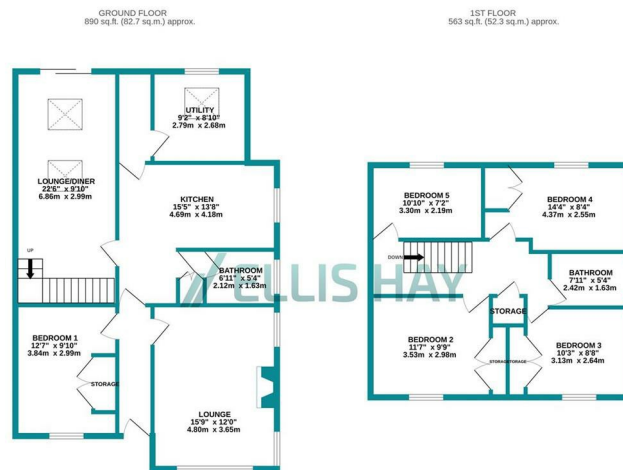
Area Map



Energy Efficiency Rating		Current	Potential
Very energy efficient - lower running costs			
(92 plus) A			83
(81-91) B			
(69-80) C			
(55-68) D		66	
(39-54) E			
(21-38) F			
(1-20) G			
Not energy efficient - higher running costs			
England & Wales		EU Directive 2002/91/EC	

Council Tax Band: C

Tenure: Freehold



TOTAL FLOOR AREA: 1453 sq ft. (135.0 sq.m.) approx.
 Whilst every attempt has been made to ensure the accuracy of the floorplan contained here, measurements of floors, ceilings, rooms, etc. may differ from those shown and are not intended to be used for any legal or financial purposes. The services, systems and appliances shown have not been tested and no guarantee is given as to the operation or efficiency of the same.

Ellis Hay for themselves, for any joint agents and for the vendors or lessors of this property whose agents they are, give notice that (i) all the particulars are set out as a general outline only for the guidance of intending purchasers or lessees, and do not constitute, nor constitute part of, an offer or contract; (ii) all descriptions, dimensions, references to condition and necessary permissions for use and occupation, and other details are given in good faith and are believed to be correct but any Intending purchasers or tenants should not rely on them as statements or representations of fact but must satisfy themselves by inspection or otherwise as to the correctness of each of them; (iii) no person in the employment of Ellis Hay, has any authority to make or give any representation or warranty whatever in relation to this property