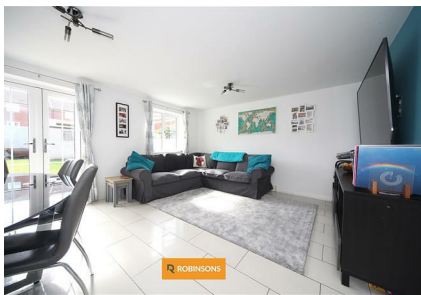
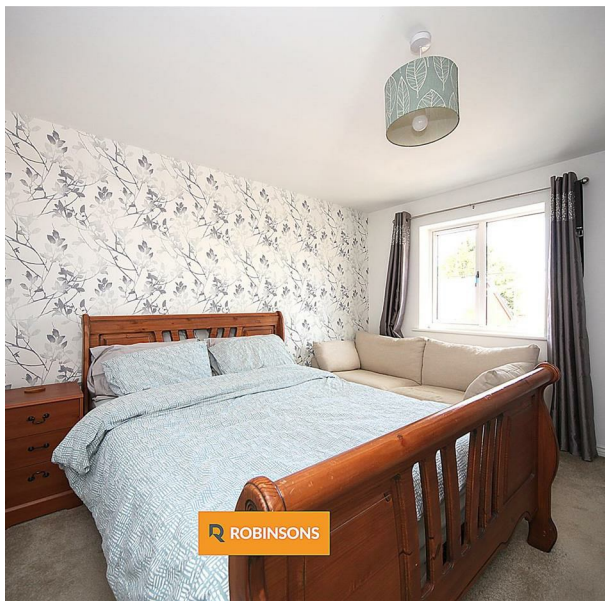


14 Goodhart Crescent, Dunstable, LU6 3FL  
Asking Price £465,000

**ROBINSONS**



A GENEROUSLY SIZED FIVE BEDROOM FAMILY HOME ARRANGED OVER THREE FLOORS, SITUATED IN A WELL REGARDED AND HIGHLY CONVENIENT PART OF DUNSTABLE, IDEALLY PLACED FOR EASY ACCESS TO LOCAL SCHOOLS, SHOPS, AND TRANSPORT LINKS INCLUDING THE A5 AND M1,

This impressive home on Goodhart Crescent is arranged across three floors and offers a fantastic layout throughout. The ground floor features a large living room measuring over 28ft in length, providing an excellent space for both relaxing and entertaining. To the rear, there is a well sized kitchen with ample storage and worktop space, along with a convenient ground floor W C.

On the first floor, you will find two well proportioned bedrooms, including a particularly spacious principal bedroom, as well as a modern family bathroom. The second floor continues to impress with two further bedrooms, one benefitting from an en suite, alongside an additional shower room, making it perfect for larger families or guests.

The total floor area of approximately 126.7 square metres highlights the generous proportions throughout, with each room thoughtfully laid out to maximise space and practicality.



Total Area: 126.7 m<sup>2</sup> ... 1364 ft<sup>2</sup>

Floorplan produced by Woodside Photography  
Floorplan is for illustration purposes only and all measurements are approximate



20 West Street  
Dunstable  
Bedfordshire  
LU6 1SX  
01582 661112  
sales@robinsons-estates.co.uk  
<https://www.robinsons-estates.co.uk>

