



House - End Terrace

13 MOUNT PLEASANT,
YARDLEY GOBION,
NORTHANTS, NN12 7TL

PCM

£1,500 PCM

FEATURES

- Character Village Property
- Hallway, Sitting Room
- Two Bedrooms, Shower Room
- Single Garage, Off Road Parking
- Period Features, Central Heating
- Kitchen/Breakfast Room
- Enclosed Mature Gardens
- EPC Energy Rating D



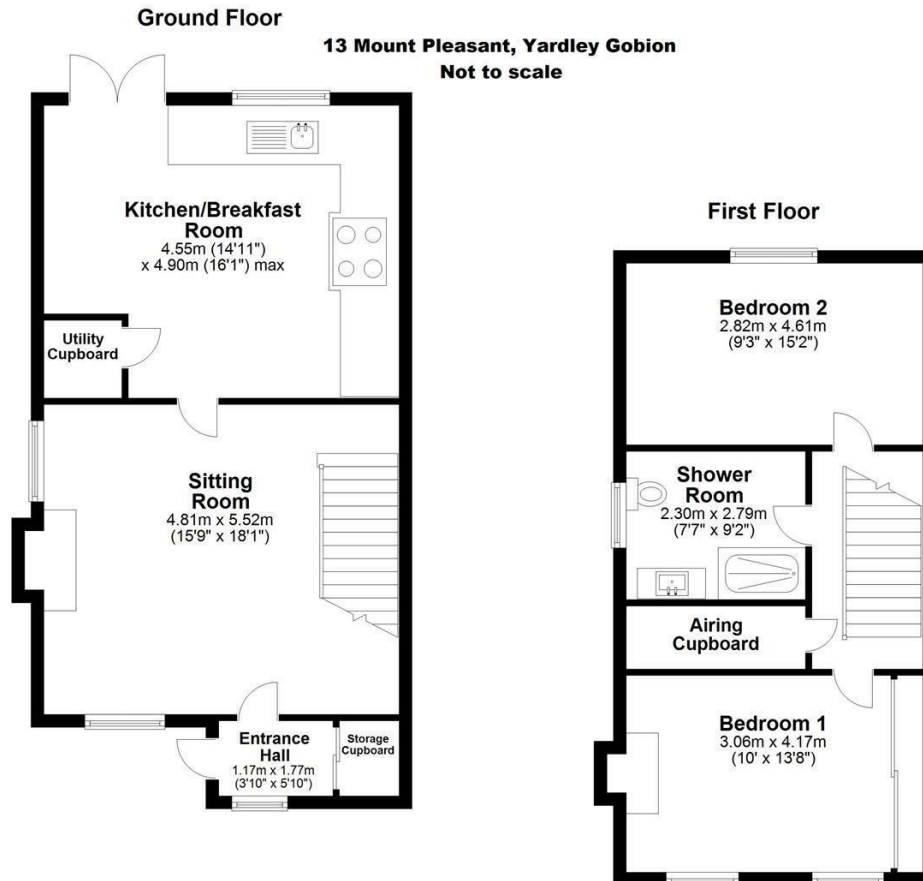
HOWKINS &
HARRISON

2 Bedroom House - End Terrace located in Northants

Howkins and Harrison are delighted to offer for let this beautiful two bedroom beautifully presented character home situated within the picturesque village of Yardley Gobion.

The property comprises of high ceilings and period features, this property offers a hallway with storage, a sitting room with cast iron open fireplace and stairs to the first floor and a good-sized kitchen/breakfast room at the rear. On the first floor is a master bedroom with full depth built in furniture and a feature cast iron fireplace, bedroom two is at the rear and there is a re-fitted shower room. To the front of the property is off road parking for 2-3 vehicles and a single garage with a fully enclosed mature garden to the rear. EPC Rating D.

Yardley Gobion is an idyllic South Northamptonshire village located between Milton Keynes and Northampton. It offers a school, sports ground and social club, restaurant and a public house. More comprehensive facilities available a short drive away in the historic coaching town of Stony Stratford and Central Milton Keynes.



Call us on

01327 359164

towcesterlets@howkinsandharrison.co.uk

Council Tax Band

C

Energy Efficiency Rating		Current	Potential
<i>Very energy efficient - lower running costs</i>			
(92 plus)	A		
(81-91)	B		
(69-80)	C		80
(55-68)	D	60	
(39-54)	E		
(21-38)	F		
(1-20)	G		
<i>Not energy efficient - higher running costs</i>			
England & Wales		EU Directive 2002/91/EC	

Agents Note: Whilst every care has been taken to prepare these particulars, they are for guidance purposes only. All measurements are approximate and are for general guidance purposes only and whilst every care has been taken to ensure their accuracy, they should not be relied upon and potential buyers are advised to recheck the measurements.

**HOWKINS &
HARRISON**