



Turpins Rise, Windlesham

£560,000



Turpins Rise, Windlesham, Surrey

Extended four bedroom end of terrace home with garage and spacious ground floor that can be used as annexe type accommodation.

FEATURES

Extended home of around 1204 sq. ft
On the popular Snobs Ride development
Built by Charles Church
Double glazing
Gas central heating

ACCOMMODATION

Entrance hall
Downstairs cloakroom
Open plan kitchen/dining room
Sitting room
Downstairs bedroom with en-suite shower room
Three further upstairs bedrooms
Family bathroom

OUTSIDE

Driveway parking
Front area laid to lawn
Private rear garden
Garage

EPC RATING

C

LOCAL AUTHORITY/COUNCIL TAX

Surrey Heath – Band E





Approximate Gross Internal Area = 100.1 sq m / 1077 sq ft
 Garage = 11.8 sq m / 127 sq ft
 Total = 111.9 sq m / 1204 sq ft

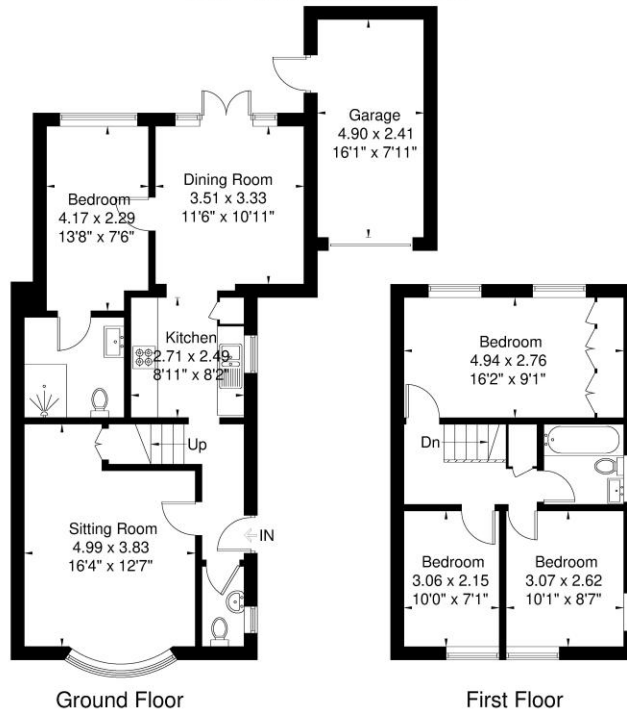


Illustration for identification purposes only,
 measurements are approximate, not to scale.

Disclaimer: We wish to inform prospective purchasers that we have prepared these sales particulars as a general guide. We have not carried out a detailed survey, nor tested the services, appliances and specific fittings. Room sizes are approximate and rounded: they are taken between internal wall surfaces and therefore include cupboards / shelves, etc. Accordingly, they should not be relied upon for carpeting, curtains / blinds and kitchen equipment, whether fitted or not, are deemed removable by the vendor unless specifically itemized within these.



NEWTON ROWE
 SALES & LETTINGS

The Old Dairy, 7 Updown Hill, Windlesham, Surrey GU20 6AF
 enquiries@newtonrowe.co.uk | 01276 986900