

FULBOURNE ROAD, LONDON

£3,500 Per Calendar Month
 5 Bed House



Features:

- 5 Bedrooms
- 3 Bathrooms
- Furnished
- American Style Fridge Freezer
- Low Maintenance Garden
- Ample Storage
- Bright and Airy
- Available August
- Council Tax Band C
- Air Conditioner In Loft Rooms

This beautifully balanced five-bedroom terraced home is ideally positioned in the heart of E17, perfectly placed between the vibrant amenities of Walthamstow, the open greenery of Epping Forest, and the excellent transport links of Wood Street station.

The property offers a thoughtfully designed layout, featuring a bright double reception room, a spacious kitchen/diner, a convenient ground floor WC, a modern first-floor family bathroom, and a converted loft with ensuite WC. To the rear, a private garden provides a peaceful outdoor retreat, while the immaculate finish throughout ensures the home is ready to move straight into.

REQUEST A VIEWING
 0203 397 9797

E11, E7, E12 & E15
 hello11@stowbrothers.com
 0203 397 2222

E4 & N17
 hello4@stowbrothers.com
 0203 369 6444

E17 & E10
 hello17@stowbrothers.com
 0203 397 9797

E18 & IG8
 hello18@stowbrothers.com
 0203 369 1818

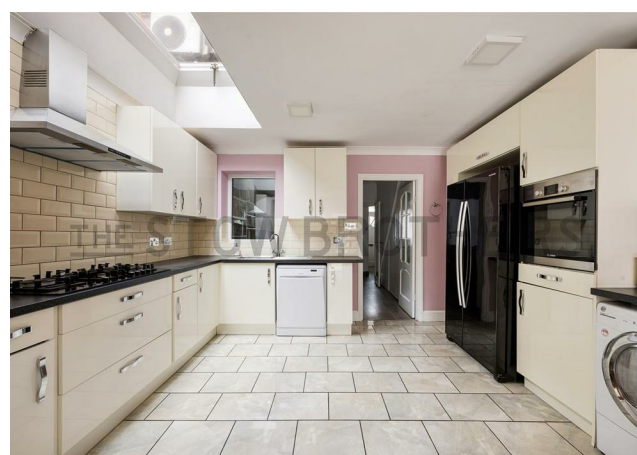
E8, E9, E5, N16, E3 & E2
 hellohackney@stowbrothers.com
 0208 520 3077

New Homes
 newhomes@stowbrothers.com
 0203 325 7227

Investment & Development
 id@stowbrothers.com
 0208 520 6220

Property Maintenance
 propertymanagement@stowbrothers.com
 0203 325 7228

STOWBROTHERS.COM
 @STOWBROTHERS



IF YOU LIVED HERE...

Behind its timeless frontage lies an impressive 1,340 square ft home, thoughtfully designed to balance period character with contemporary style.

The bright double reception room is flooded with natural light from large bay windows, while neutral decor enhances the feeling of space throughout.

To the rear, the stylish kitchen/diner combines sleek units with high-spec appliances, softened by blush-toned finishes that create a modern yet welcoming atmosphere. There's ample space for dining and entertaining, while a convenient ground floor WC adds everyday practicality.

The first floor offers three smart bedrooms alongside a beautifully finished family bathroom, complete with terrazzo-style tiling and a walk-in shower.

The converted loft provides two additional rooms, including one with an ensuite WC and useful eaves storage.

Outside, the landscaped rear garden has been designed for low-maintenance living and benefits from a desirable west-facing aspect, making it an ideal spot to relax and enjoy the afternoon and evening sun.

If you're after green space, both Epping Forest and Lloyd Park are just a short stroll away, each lovely in their own way.

Meanwhile, Wood Street is thriving with youthful energy. Exciting new shops and eateries sit alongside old favourites such as the unique Wood Street Indoor Market and the much-loved garden centre Lancasters. Not sure where to start? Try Wood Street Bear, popular brunch spot Dudley's, or award-winning bakery Chocolatine. Even closer to home you'll find the charming coffee shop Ruttle & Rowe.

When it's time to travel further afield, you're walking distance from Wood Street station, where direct Weaver line services will take you to Liverpool Street in around 20 minutes. Or hop one stop to Walthamstow Central and switch to the Victoria line for quick access to the West End.



WHAT ELSE?

- The hub of Highams Park is a mile north, if you want to mix up your amenities.
- Parents will be pleased to know you have plenty of well regarded schools in the area.
- For your new local you couldn't ask for better than The Dog & Duck, a stylish family friendly gastropub.s

REQUEST A VIEWING
0203 397 9797

FOLLOW US → @STOWBROTHERS
STOWBROTHERS.COM