



Codling Road, Bury St. Edmunds, IP32 7HF

Rent - £1,600 PCM Deposit - £1,846

Shires Residential are pleased to offer this spacious detached house on the popular Moreton Hall development. The property consists of an entrance hall, kitchen, utility room, living room, dining room and cloakroom. To the first floor there are four bedrooms, en-suite shower room and bathroom. There is a large driveway to the front and pleasant garden to the rear.

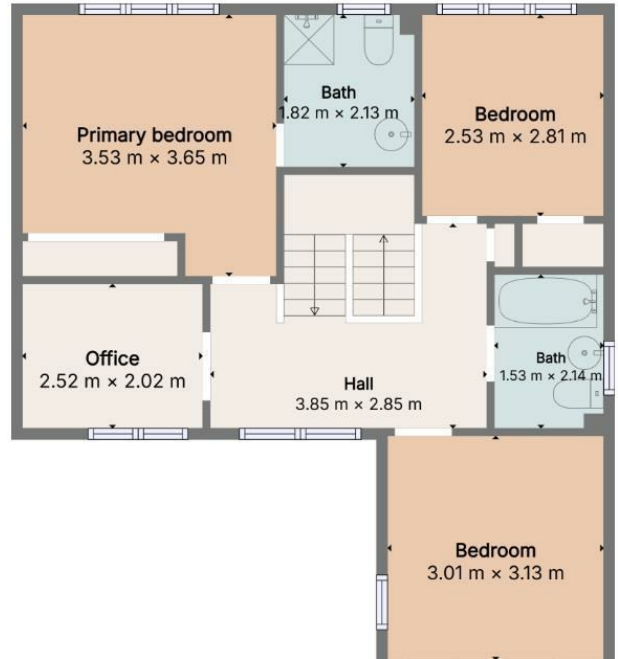
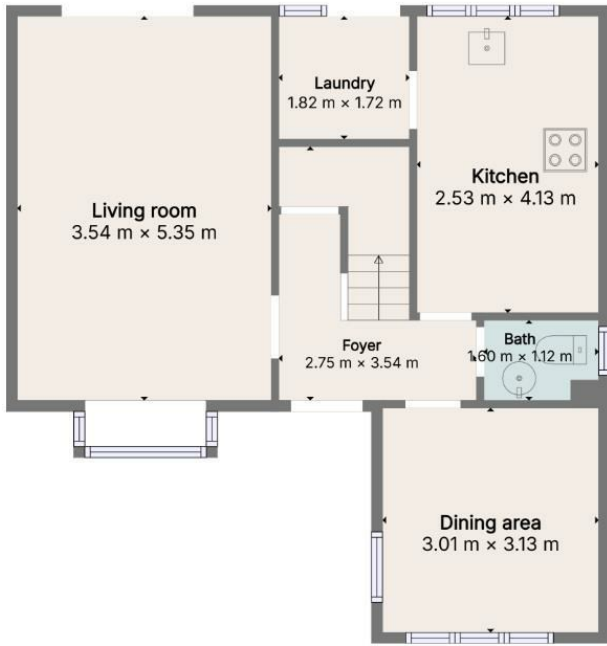
Agent's Note:

Please be aware that images of the property may have been digitally enhanced, edited, or staged using artificial intelligence, and may not reflect the current presentation or furnishings.

- DETACHED HOUSE
- FOUR BEDROOMS
- UTILITY ROOM
- COUNCIL TAX BAND - D
- AVAILBLE BEGINNING OF SEPTEMBER
- SPACIOUS RECEPTION AREA
- GAS HEATING & ENERGY RATING - C
- FAMILY BATHROOM & EN-SUITE SHOWER ROOM
- OFF ROAD PARKING & ENCLOSED REAR GARDEN



Council Tax Band: D - EPC Rating: C 72



Sizes and dimensions are approximate, actual may vary.

