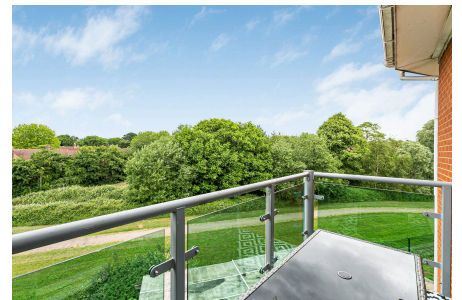
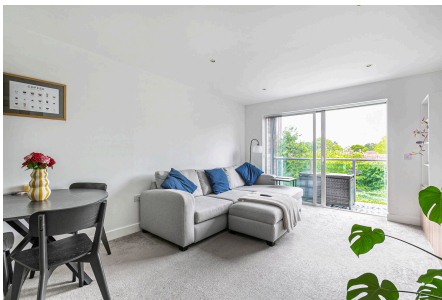


## Medhurst Drive, Bromley, BR1

Offers Over £325,000

2 2 1



Please Quote Ref TH0310 For All Enquiries - Beautifully presented two bedroom second (top) floor apartment (763 Sq.Ft) with allocated parking and private balcony overlooking gorgeous communal gardens, ideally located in a sought after private gated development close to Beckenham Hill station, Beckenham Place Park and Bromley town centre. Superbly maintained and appointed, the property offers bright, well planned accommodation with stylish interiors and quality finish throughout - the perfect base for a modern lifestyle. Features include an inviting open plan reception/kitchen, modern bathroom and principal en-suite, gas central heating, double glazing, ample inbuilt storage, quality floor coverings and neutral decor.



## Key Features

- Stunning Two Bedroom Second (Top) Floor Apartment (763 Sq.Ft)
- Stylish Interiors and Neutral Finish
- Private Balcony with Green Views
- Allocated Parking
- Close to Transport Links
- Sought After Gated Development
- Bright and Spacious Open Plan Reception/ Kitchen
- Modern Bathroom and Principal En-Suite
- Long Lease
- Easy Access Shops and Amenities

Approximate Gross Internal Area 763 sq ft - 71 sq m

