

Holdings

A Modern Estate Agent



2 Church Side, Loughborough, LE12 9RL

Offers over £140,000

Holdings Estate Agents are delighted to bring to market this charming three bedroom cottage, situated in the conservation area in Shepshed overlooking the Church grounds. In brief internally it offers a lounge, kitchen, bathroom and three bedrooms. Outside there is a useful garage for storage.

Summary

Situated within the heart of Shepshed's conservation area and enjoying attractive views towards the church, this charming and deceptively spacious three-bedroom cottage is full of character and period appeal. Ideally located within walking distance of the town centre and local amenities, the property combines traditional features with flexible accommodation arranged over and above the archway.

The accommodation is entered via a multi-pane door into a welcoming lounge featuring exposed beams, a high ceiling and an exposed brick fireplace housing a wood-burning stove, creating a warm and inviting living space. An inner hallway leads to the staircase rising to the first floor, while the kitchen is fitted with a range of units and benefits from exposed brickwork, cottage-style double glazed windows and space for appliances. The ground floor also includes a refitted bathroom complete with a Mira Sport electric shower over the bath.

To the first floor are three genuine double bedrooms, all offering generous proportions and individual character. The principal bedroom enjoys a cast iron fireplace, while the rear bedroom benefits from a pleasant south-facing aspect. The third bedroom is particularly distinctive, spanning above the archway and adding to the home's unique and deceptive layout.

Externally, the property enjoys low-maintenance raised beds to the rear along with a substantial workshop/garage equipped with power and lighting, ideal for storage, hobbies or home working. This delightful cottage presents a rare opportunity to acquire a characterful home in a sought-after central location with an abundance of charm and flexible living space throughout.

Disclaimer

1. Intending purchasers will be asked to produce identification documentation.
2. While we endeavour to make our sales particulars fair, accurate, and reliable, they are only a general guide to the property.
3. The measurements indicated are supplied for guidance only and, as such, must be considered incorrect.
4. Please note we have not tested the services or any of the equipment or appliances in this property; accordingly, we strongly advise prospective buyers to commission their survey or service reports

before finalising their offer to purchase.

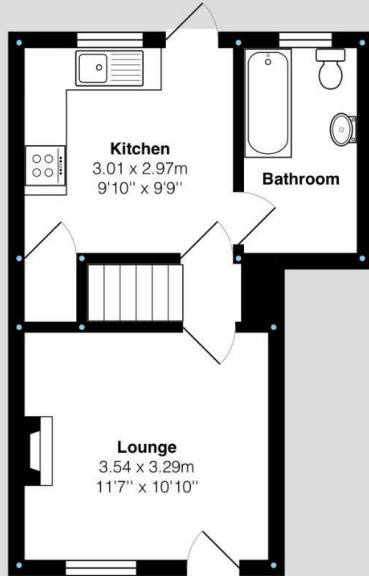
5. These particulars are issued in good faith but do not constitute representations of fact or form part of any offer or contract. The matters referred to in these particulars should be independently verified by prospective buyers. Neither Holders Estate Agents nor its agents have any authority to make or give any representation or warranty concerning this property.

Extra Information

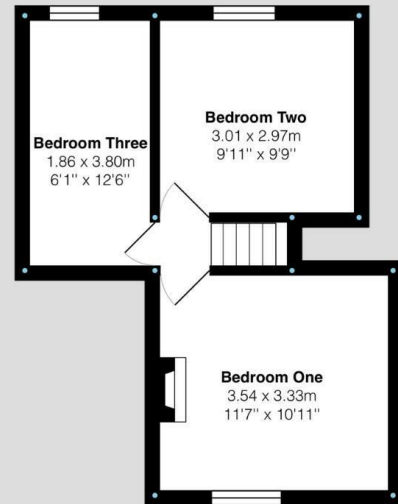
To check Internet and Mobile Availability please use the following link: checker.ofcom.org.uk/engb/broadband-coverage To check Flood Risk please use the following link: check-long-term-flood-risk.service.gov.uk/postcode

Floor Plan

Ground Floor:



First Floor:



Church Side, Shepshed

Internal Square Footage: Approx 620 sq.ft

Holderr
A Modern Estate Agent

Church Side, Shepshed

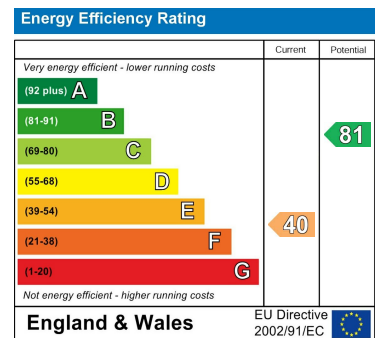
Internal Square Footage: Approx 620 sq.ft

Holderr
A Modern Estate Agent

Area Map



Energy Efficiency Graph



These particulars, whilst believed to be accurate are set out as a general outline only for guidance and do not constitute any part of an offer or contract. Intending purchasers should not rely on them as statements of representation of fact, but must satisfy themselves by inspection or otherwise as to their accuracy. No person in this firm's employment has the authority to make or give any representation or warranty in respect of the property.

1 Field Street, Shepshed, LE12 9AL

Tel: 01509n 451100 Email: hello@holdersestateagents.co.uk