



Manor Vale, TW8

£375,000

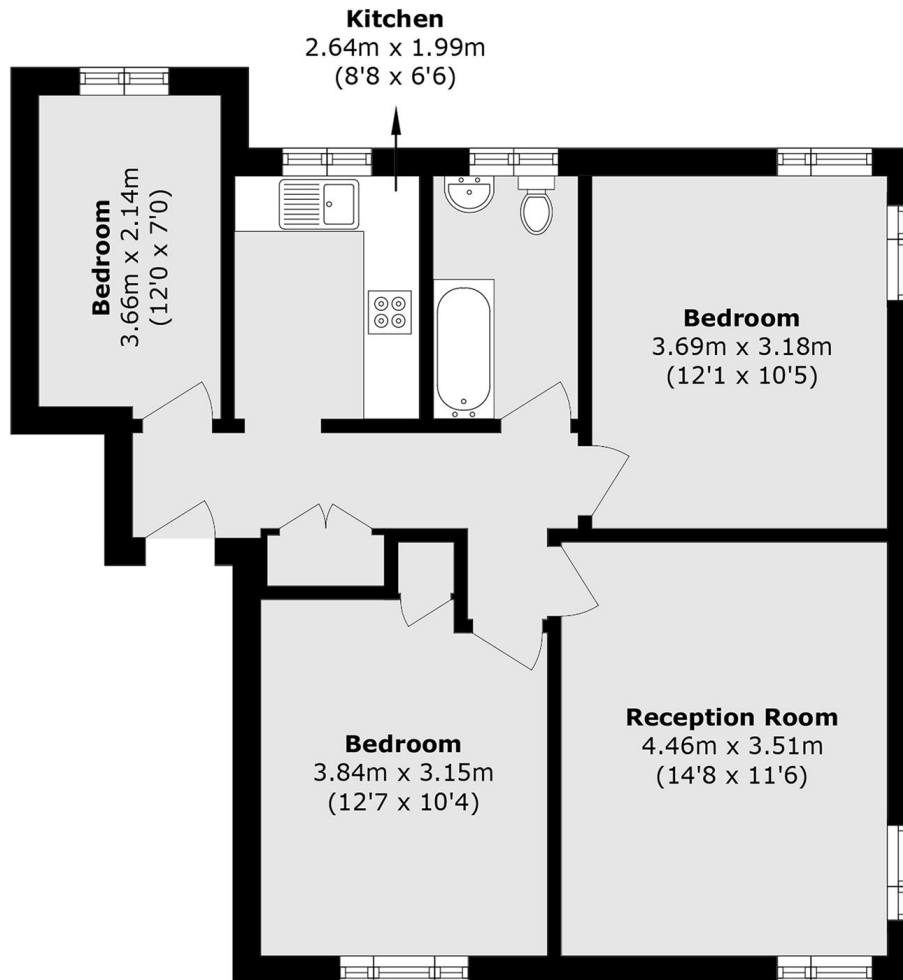
Located on the ground floor is this three bedroom flat that offers a perfect blend of space and comfort. Finished to a great condition throughout, the property is ideal for first-time buyers, downsizers or investors.

Manor Vale is located close to Boston Manor Park, Boston Manor Piccadilly line station and within walking distance to Brentford station with direct train to Waterloo.

Features

- Purpose Built
- Three Bedrooms
- Ground Floor
- Great Condition
- Communal Gardens
- Good Transport Links

Manor Vale, Brentford, TW8



Total area (approx.): 66.3 sq. m (713.6 sq. ft)