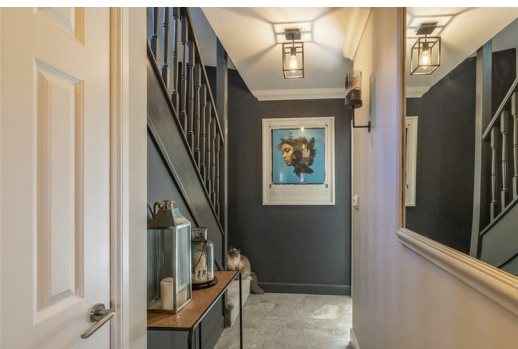




SAXON SHORE  
— ESTATE AGENTS —



## 4 Belvedere Close, Faversham, ME13 7GQ Offers in excess of £500,000

Introducing this well presented, four bedroom town house on Belvedere Close in Faversham. Located close to the creek, just a short walk away from the town centre and mainline train station.

Accommodation spans across three floors and comprises an entrance hall, a spacious open plan lounge/kitchen/diner with access onto the garden and a W/C to the ground floor.

Upstairs on the first floor is a utility room, a double bedroom and a sitting room with two Juliet balconies allowing in plenty of natural light.

On the second floor are three good sized bedrooms, two of which have fitted wardrobes, and one has an ensuite shower room, and a full bathroom.

Outside to the front is a driveway providing ample off street parking. To the rear is a sunny terraced garden with patio areas and lawn.

## Driveway



## Entrance Hall



## WC

5'2" x 2'11" (1.6 x 0.91)



## Kitchen/Diner

7'3" x 16'0" x 12'6" (2.23 x 4.9 x 3.82)



## Lounge

8'6" x 14'4" (2.6 x 4.37)



## Landing



## Sitting room

10'5" x 16'0" x 17'6" (3.2 x 4.9 x 5.35)



## Bedroom 4

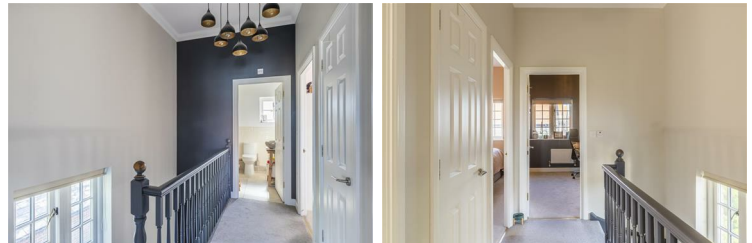
9'2" x 11'1" (2.8 x 3.38)



## Utility Room

6'10" x 7'3" (2.1 x 2.23)

## Landing



## Bedroom 1

9'2" x 14'6" (2.8 x 4.42)



**Bathroom**

6'10" x 7'3" (2.1 x 2.23)



**Ensuite**

5'9" x 6'0" (1.77 x 1.84)



**Bedroom 2**

9'2" x 11'1" (2.8 x 3.38)



**Bedroom 3**

7'7" x 10'5" (2.33 x 3.2)



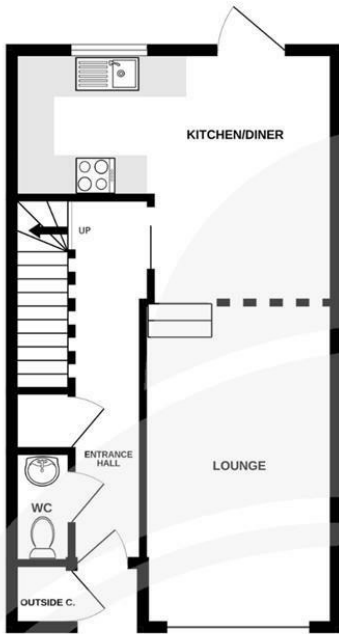
**Garage**



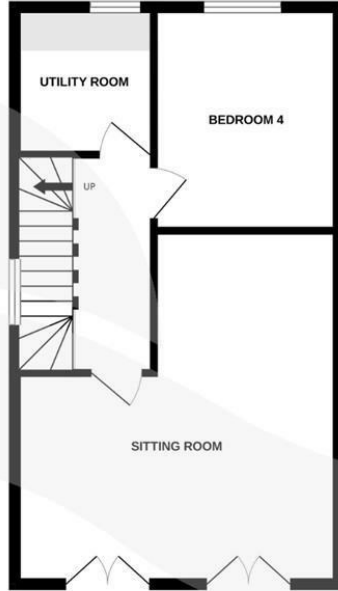
**Garden**



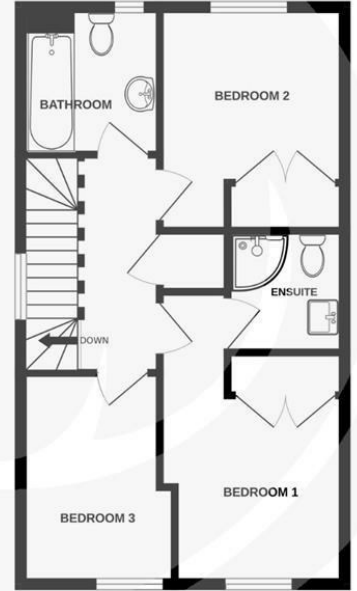
GROUND FLOOR  
41.8 sq.m. (450 sq.ft.) approx.



1ST FLOOR  
42.8 sq.m. (461 sq.ft.) approx.



2ND FLOOR  
42.6 sq.m. (458 sq.ft.) approx.



TOTAL FLOOR AREA : 127.2 sq.m. (1369 sq.ft.) approx.

Whilst every attempt has been made to ensure the accuracy of the floorplan contained here, measurements of doors, windows, rooms and any other items are approximate and no responsibility is taken for any error, omission or mis-statement. This plan is for illustrative purposes only and should be used as such by any prospective purchaser. The services, systems and appliances shown have not been tested and no guarantee as to their operability or efficiency can be given.  
Made with Metropix ©2025

