



Trafalgar Road, SE10

£650,000

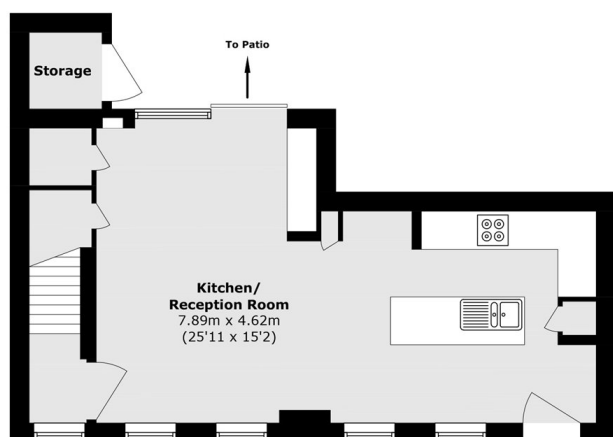
An opportunity to acquire this unique three bedroom two bathroom period family home which is split across three levels and situated in a sought after location. The property further benefits from under floor heating and air-con throughout. A viewing is highly recommended

Situated on quiet residential street located moments from Maze Hill Mainline Station providing direct links to London Bridge, Cannon Street and Kings Cross. The open green spaces of Greenwich Park are located a short walk away as are the many historical attractions of Greenwich including the National Maritime Museum, Royal Observatory and the Royal Naval College. There are an array of local shops, restaurants and cafes along Trafalgar Road for residents to enjoy while larger supermarkets are also within easy reach. There are also a number of popular local schools for families to consider.

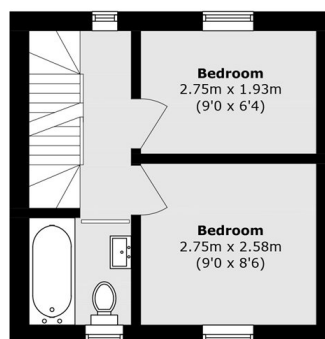
Features

- Three Bedrooms
- Two Bathrooms
- Period
- Split Across Three Floors
- Outside Space
- Sought After Location

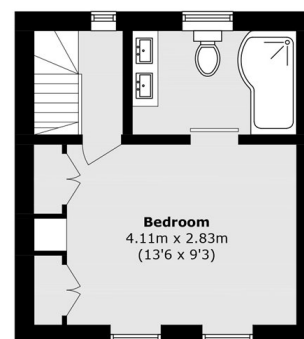
Trafalgar Road, London, SE10



Ground Floor



First Floor



Second Floor

Total area (approx.): 75.0 sq. m (807.3 sq. ft)
External Storage area (approx.): 1.4 sq. m (15.1 sq. ft)