



Bell Lane, Bury St. Edmunds, IP28 6AJ

Rent - £2,250 PCM

Deposit - £2,596

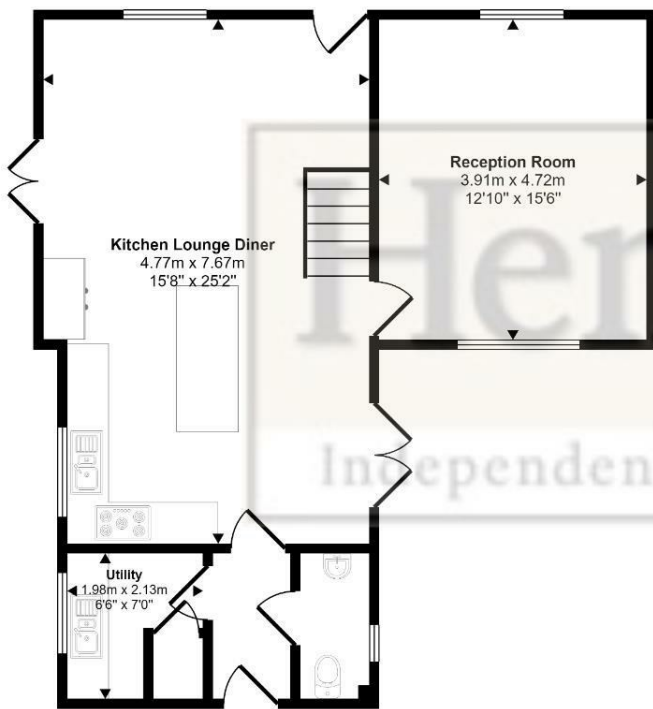
Extremely well presented THREE bedroom detached property in the popular village of Barton Mills. The property boasts modern living throughout benefitting from 3 bedrooms, 2.5 bathrooms, spacious living areas, off road parking & fully enclosed rear garden

- DETACHED HOME
- 3 BEDROOMS
- MODERN KITCHEN
- FAMILY BATHROOM & EN-SUITE
- ENCLOSED REAR GARDEN & PARKING
- CLOSE TO RAF BASES
- GAS HEATING & ENERGY RATING - C
- APPROXIMATE SIZE 1474 SQFT
- COUNCIL TAX BAND - D
- AVAILABLE MID FEBRUARY



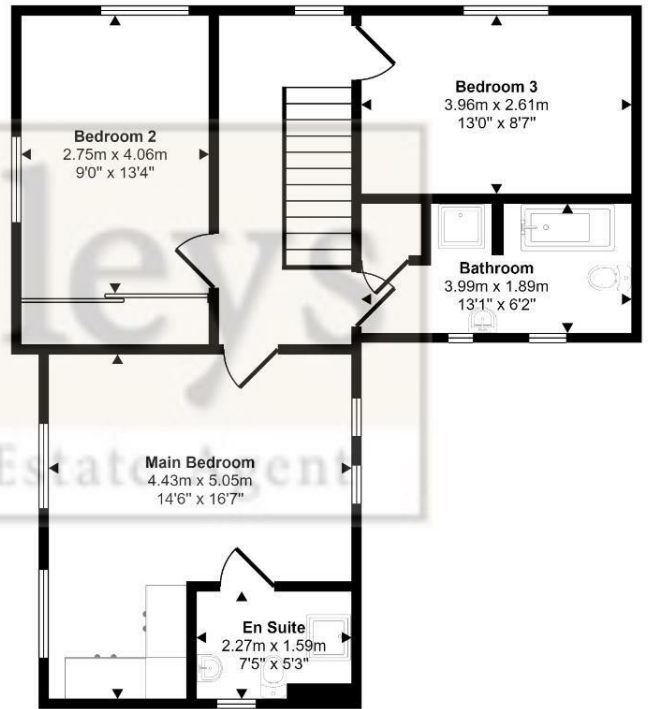
Council Tax Band: D - EPC Rating: C 78

Approx Gross Internal Area
130 sq m / 1398 sq ft



Ground Floor

Approx 64 sq m / 694 sq ft



First Floor

Approx 65 sq m / 705 sq ft

This floorplan is only for illustrative purposes and is not to scale. Measurements of rooms, doors, windows, and any items are approximate and no responsibility is taken for any error, omission or mis-statement. Icons of items such as bathroom suites are representations only and may not look like the real items. Made with Made Snappy 360.

