



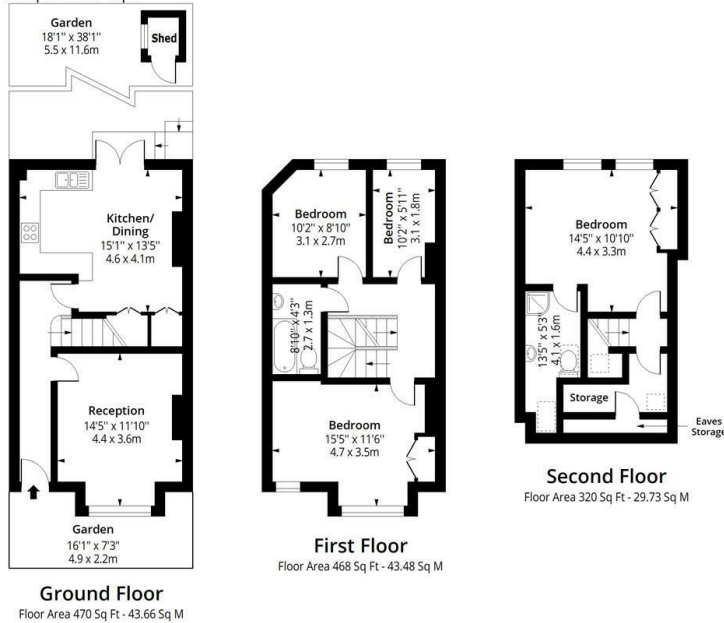
8 Chertsey Street, London, SW17 8LG

£3,800 Per month

- Four-bedroom semi-detached family home
- Spacious reception room
- Close to Tooting Broadway and Tooting Bec stations
- Recently refurbished throughout
- Principal bedroom with en-suite shower room
- Available immediately
- Brand-new carpets fitted
- Private rear garden

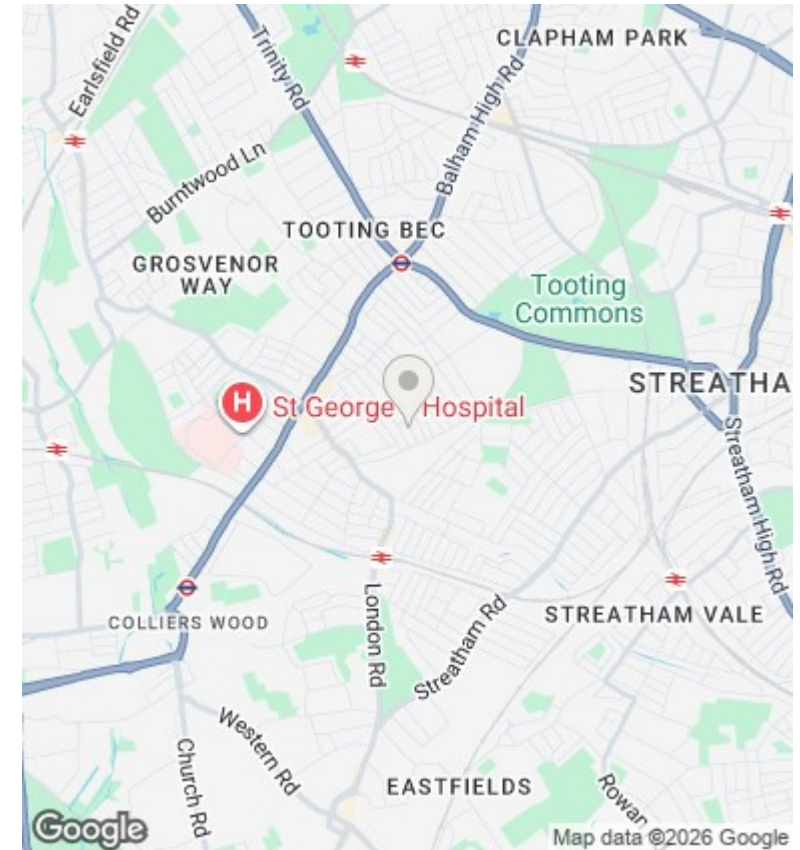
Chertsey Street SW17

Approx. Gross Internal Area 1258 Sq Ft - 116.87 Sq M
 Approx. Gross Eaves Area 16 Sq Ft - 1.49 Sq M



Measured according to RICS IPMS2. Floor plan is for illustrative purposes only and is not to scale. Every attempt has been made to ensure the accuracy of the floor plan shown, however all measurements, fixtures, fittings and data shown are an approximate interpretation for illustrative purposes only. 1 sq m = 10.76 sq feet.
 lpaplus.com

Date: 6/1/2026



Directions

Viewings

Viewings by arrangement only. Call 0208 075 4927 to make an appointment.

Council Tax Band

D

EPC Rating:

D

Energy Efficiency Rating		
	Current	Potential
Very energy efficient - lower running costs		
(92 plus) A		
(81-91) B		84
(69-80) C		
(55-68) D	59	
(39-54) E		
(21-38) F		
(1-20) G		
Not energy efficient - higher running costs		
England & Wales	EU Directive 2002/91/EC	