



East of 
ESTATE AGENTS

East & West of 

Whimbrel Court
Topsham £595,000

Whimbrel Court

Topsham £595,000

A beautifully presented three-bedroom home located within a sought-after Topsham development. Within walking distance of local amenities and featuring a spacious open-plan layout, with a contemporary kitchen, stunning sitting room/dining room with bifold doors opening to the landscaped garden, cloakroom, master ensuite and family bathroom and benefitting from two parking spaces.

Semi Detached | Stunning Modern Home | Sought After EX3 Development | Two Parking Spaces | Large Open Plan Living With Bifold Doors | Beautiful Kitchen | Three Bedrooms | Master Ensuite, Family Bathroom | Landscaped Garden, EV Charging Point | No Ongoing Chain

DESCRIPTION

Built in 2019 and forming part of the highly regarded EX3 development on the edge of Topsham, this beautifully presented three-bedroom semi-detached home offers stylish, modern living with light-filled interiors and a thoughtfully landscaped garden designed for easy maintenance.

The property opens into a welcoming entrance hallway with stairs rising to the first floor and a contemporary cloakroom/WC. From here, a door leads into the impressive open-plan kitchen, dining and living space - a wonderfully bright and sociable room that forms the heart of the home. Bifold doors open directly onto the garden, allowing the space to flow seamlessly outdoors during the warmer months.

The kitchen is both elegant and practical, with a window to the front and side aspect bringing in plenty of natural light. It is fitted with quartz worktops, generous storage, an eye-level oven and gas hob, while engineered oak flooring with underfloor heating runs throughout the ground floor, adding warmth and continuity. A large under stairs cupboard provides useful additional storage.



Upstairs, the first floor offers three well-proportioned bedrooms. The principal bedroom features a striking picture window to the front and benefits from its own ensuite shower room. Bedroom two, currently used as a creative studio, and bedroom three both enjoy pleasant open views towards Topsham Rugby Club. A modern family bathroom serves the remaining bedrooms.

Outside, the garden has been attractively hard landscaped for low-maintenance living, with mature planted borders softening the space and a pretty paved patio area perfectly suited for outdoor dining and entertaining. Side access leads conveniently back to the front of the property where a useful EV charging point can be found.

Well positioned for the amenities, riverside walks and vibrant community of Topsham, as well as excellent connections to Exeter, this is a superb contemporary home in a sought-after location.

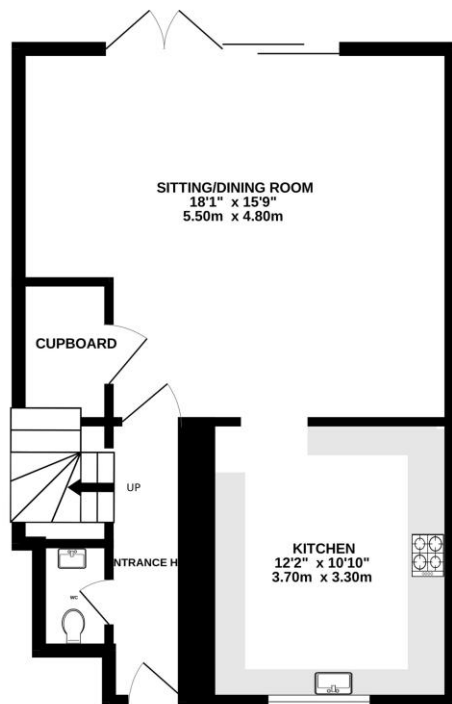
LOCATION

Situated in the highly sought-after EX3 development, which has introduced a range of modern homes together with improved local infrastructure and green spaces, further enhancing this popular area's appeal while remaining within easy reach of Topsham's traditional town centre. The property enjoys a convenient yet peaceful setting within easy reach of the town's excellent local amenities. Topsham is renowned for its charming historic streets, waterside walks along the River Exe, and a vibrant selection of independent shops, cafés and restaurants. Approximately four miles away lies the cathedral city of Exeter, offering an extensive range of shopping, dining and cultural facilities. Topsham also benefits from its own railway station with regular services to Exeter and the coastal town of Exmouth.

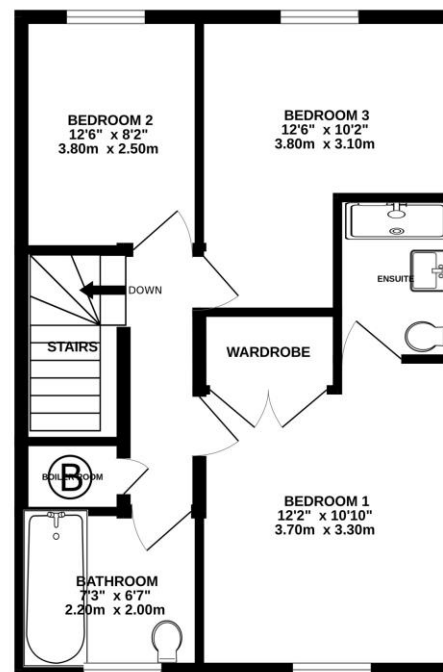
The surrounding area offers excellent opportunities for outdoor recreation, including sailing on the River Exe and walking or cycling along the scenic Exe Estuary Trail. For those travelling further afield, the nearby M5 motorway provides convenient connections to the wider South West and beyond.



GROUND FLOOR
491 sq.ft. (45.6 sq.m.) approx.



1ST FLOOR
468 sq.ft. (43.5 sq.m.) approx.



TOTAL FLOOR AREA : 959 sq.ft. (89.1 sq.m.) approx.
Measurements are approximate. Not to scale. Illustrative purposes only
Made with Metropix ©2026

AGENTS NOTES

To the best of the Vendors knowledge, they have advised the following: -

Tenure: Freehold

Council Tax Band:

Council: Exeter City Council

Parking: Two Parking Spaces

Garden: Lovely Rear Garden

Electricity: Mains

Heating: Mains Gas Boiler

Water supply: Mains

Sewerage: Mains

Green Fee: £277.80 PA

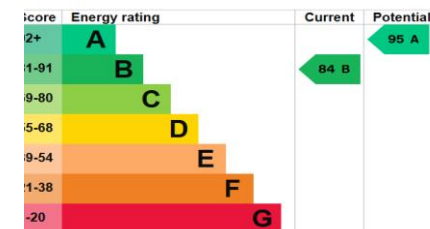
Broadband: Full Fibre Broadband

With 1600 MPS Download &

115MPS Upload

Mobile Signal: Several networks currently showing as available at the property including EE &

Vodafone



Agents Note: Whilst every care has been taken in the preparation of these sales particulars, they are for general guidance only. All measurements, descriptions and other details are approximate and should not be relied upon as statements of fact. Prospective purchasers must satisfy themselves, as to the accuracy of the information by inspection, measurement or otherwise. If inadvertently omitted or inaccurate details come to light after distribution, East and West of Exe reserves the right to withdraw, amend and reissue this brochure without notice or liability for any financial loss prior to exchange of contracts. East and West of Exe has no authority to make legal representations or warranties in relation to the property, including but not limited to boundaries, environmental matters, planning, building regulations and title matters, and cannot enter into any contract on behalf of the Vendor. All offers are subject to contract and the Vendor reserves the right to refuse any offer without giving reason. We do not accept responsibility for any expenses incurred by prospective purchasers at any stage of the transaction, in relation to properties that have been sold, let, or withdrawn. These particulars are prepared in accordance with the Consumer Protection from Unfair Trading Regulations (2008) and the Business Protection from Misleading Marketing Regulations (2008). Any material information known to the agent has been disclosed; however, buyers must make their own enquiries to confirm any details that are material to their purchasing decision.



EXETER OFFICE
18 Southernhay West Exeter EX1 1PJ
Tel: 01392 833999
enquiries@eastofexe.co.uk
www.eastofexe.co.uk

EAST DEVON OFFICE
61 Fore Street Topsham Exeter EX3 0HL
Tel: 01392 345070
enquiries@eastofexe.co.uk
www.eastofexe.co.uk

WEST OF EXE OFFICE
Main Road Exminster EX6 8DB
Tel: 01392 833999
enquiries@westofexe.co.uk
www.westofexe.co.uk