



£140,000

Paton Court

Nottingham, NG14 6RL

PROPERTY SUMMARY

High Specification Two Bedroom Apartment with Open Plan Living, En-Suite Bedroom and Allocated Parking

Finished to a high specification throughout, this beautifully presented two-bedroom apartment offers stylish and contemporary living within a sought-after development in the popular village of Calverton. Ideal for first-time buyers, professionals or those looking to downsize, it combines modern finishes with a practical layout.

The accommodation comprises a bright and spacious open plan kitchen, living and dining area, creating the perfect space for everyday living and entertaining. The contemporary kitchen benefits from integrated appliances and ample storage, flowing seamlessly into the generous lounge.

The principal bedroom enjoys the luxury of a modern en-suite shower room, while the second double bedroom provides flexible space for guests, family or a home office. A stylish family bathroom completes the accommodation.

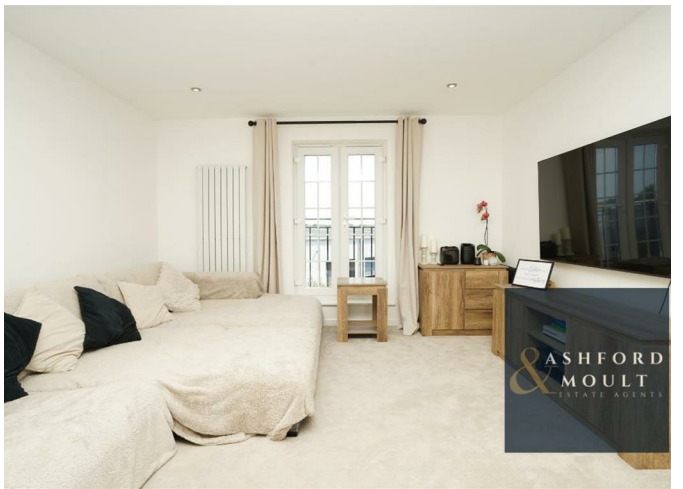
2



2



1





**ASHFORD
& MOULT**
ESTATE AGENTS



**ASHFORD
& MOULT**
ESTATE AGENTS



2	
2	
1	

Energy Efficiency Rating		
	Current	Potential
<i>Very energy efficient - lower running costs</i>		
(92 plus) A		
(81-91) B		
(69-80) C	77	79
(55-68) D		
(39-54) E		
(21-38) F		
(1-20) G		
<i>Not energy efficient - higher running costs</i>		
England & Wales	EU Directive 2002/91/EC	

Agents Note: Whilst every care has been taken to prepare these particulars, they are for guidance purposes only. All measurements are approximate and are for general guidance purposes only and whilst every care has been taken to ensure their accuracy, they should not be relied upon and potential buyers/tenants are advised to recheck the measurements

	OFFICE ADDRESS 56 Main Street Calverton Nottinghamshire NG14 6FN	OFFICE DETAILS 01158 656675 sales@ashfordandmoulton.co.uk