

William Morris Way, SW6

£590,000

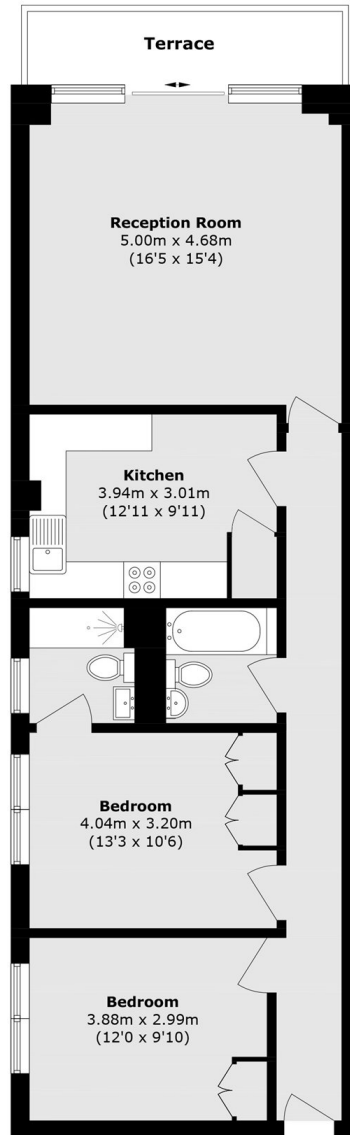
A beautifully presented ground floor apartment offering two generous double bedrooms and two modern bathrooms, set within a highly sought-after riverside development located on the banks of the River Thames. The property features a separate, fully integrated kitchen with high-quality appliances, and a bright, spacious reception room with bi-fold doors opening directly onto a private patio. The flat benefits from a private underground parking space.

Regents on the River is a superb gated riverside development set within beautifully landscaped gardens and offering the reassurance of a 24/7 porter service. Perfectly positioned, it benefits from the excellent amenities and transport links of Imperial Wharf, Fulham Broadway, and Wandsworth Town. Residents can enjoy the boutique independent shops, restaurants, and cafés along Wandsworth Bridge Road, while the prestigious Chelsea Harbour Club is just moments away.

Features

- Two Double Bedrooms
- Concierge and Porter
- Underground Parking Space
- Private Patio
- Spacious Living Room
- Long Lease

William Morris Way, London, SW6



Total area (approx.): 84.7 sq. m (911.7 sq. ft)
Terrace (approx.): 6.1 sq. m (65.6 sq. ft)