

42 New Barns Avenue, Chorlton, Manchester, M21 7DG



JP&Brimelow
ESTATE AGENTS



3 3 3 C

VIDEO TOUR AVAILABLE An attractive & immaculately presented, THREE BEDROOM, modern townhouse. This extended property is situated on a good sized corner plot, nestled within a sought-after residential development off Nell Lane in Chorlton.

With Chorlton Park and Chorlton Park Primary School on the doorstep, and three secondary schools within a 10-minute walk. A few minutes' walk away is Barlow Moor Road Metrolink station, giving direct access to City Centre, Media City and Manchester International Airport.

Offering over 1400sqft of accommodation the property is spread over three floors and in brief consist of; a porch, an entrance hall, a snug to the front aspect, a W.C, a useful utility room, and a stunning open plan wrap around dining, kitchen/lounge area. The dining room sits to the front aspect, leading through to the beautifully fitted kitchen which offers a central kitchen island and lounge area which benefits from views and access out into the rear garden via sliding patio doors spanning the width of the property.

To the first floor there are two well proportioned bedrooms, and a three-piece bathroom suite.

Stairs leading to the second-floor landing reveal the principal bedroom which is complete with a beautiful en-suite shower room, and benefits from useful eaves storage.

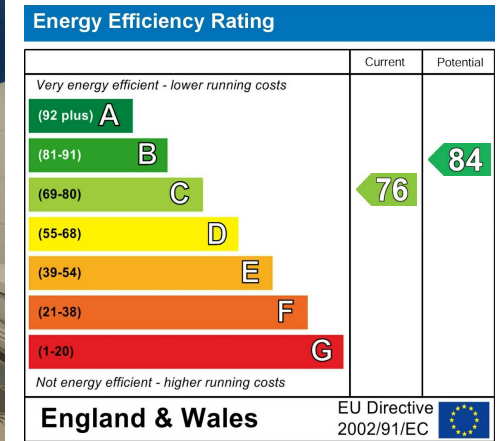
The property benefits from gas fired central heating, an alarm system, high ceilings, an enclosed rear garden, and tandem parking to the rear offering off road parking for two vehicles.

£550,000



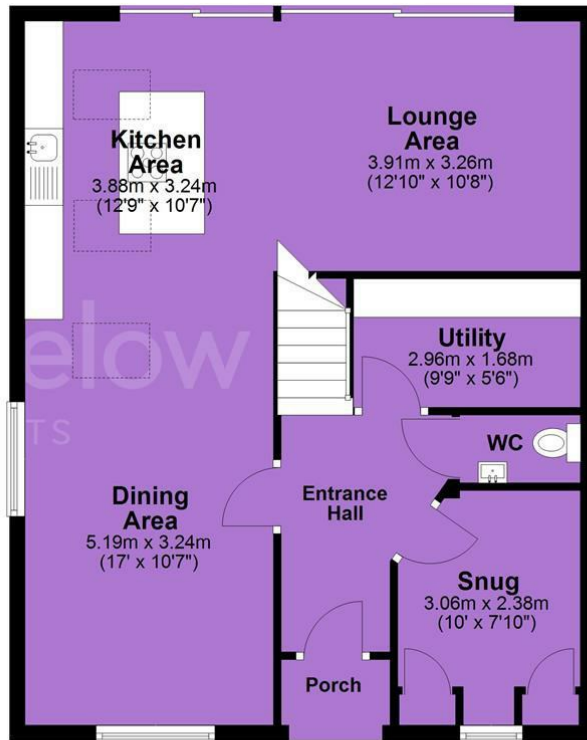


EPC Chart

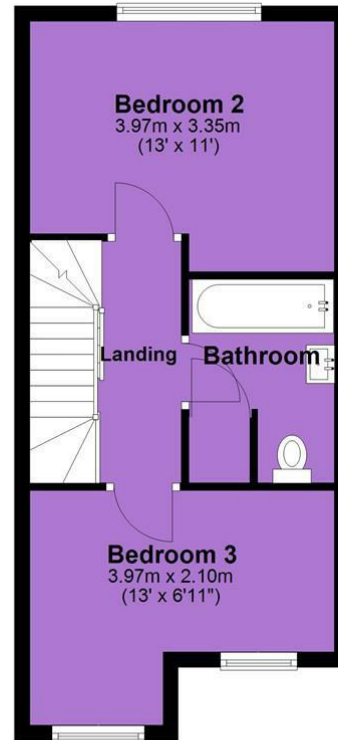


Tenure: Freehold Council Tax Band: D

Ground Floor



First Floor



Second Floor



JP & Brimelow Estate Agents Ltd
430 Barlow Moor Road, Manchester, M21 8AD
Tel: 0161 8822233
E: sales@jpbrimelow.co.uk www.jpandbrimelow.co.uk



JP & Brimelow
ESTATE AGENTS

NOTICE: JP & Brimelow Estate Agents Ltd for themselves and for the vendors or lessors of this property whose agents they are give notice that:

- (i) the particulars are set out as a general outline only for the guidance of intending purchasers or lessees, and do not constitute, nor constitute part of, an offer or contract;
- (ii) all descriptions, dimensions, references to the condition and necessary permissions for use and occupation, and other details are given in good faith and are believed to be correct but any intending purchasers or tenants should not rely on them as statements or representations of fact but must satisfy themselves by inspection or otherwise as to the correctness of each of them;
- (iii) no person in the employment of JP & Brimelow Estate Agents Ltd has any authority to make or give any representation or warranty whatever in relation to this property.

jpandbrimelowstateagents

@jpandbrimelow

