



QUEENSWAY, W2

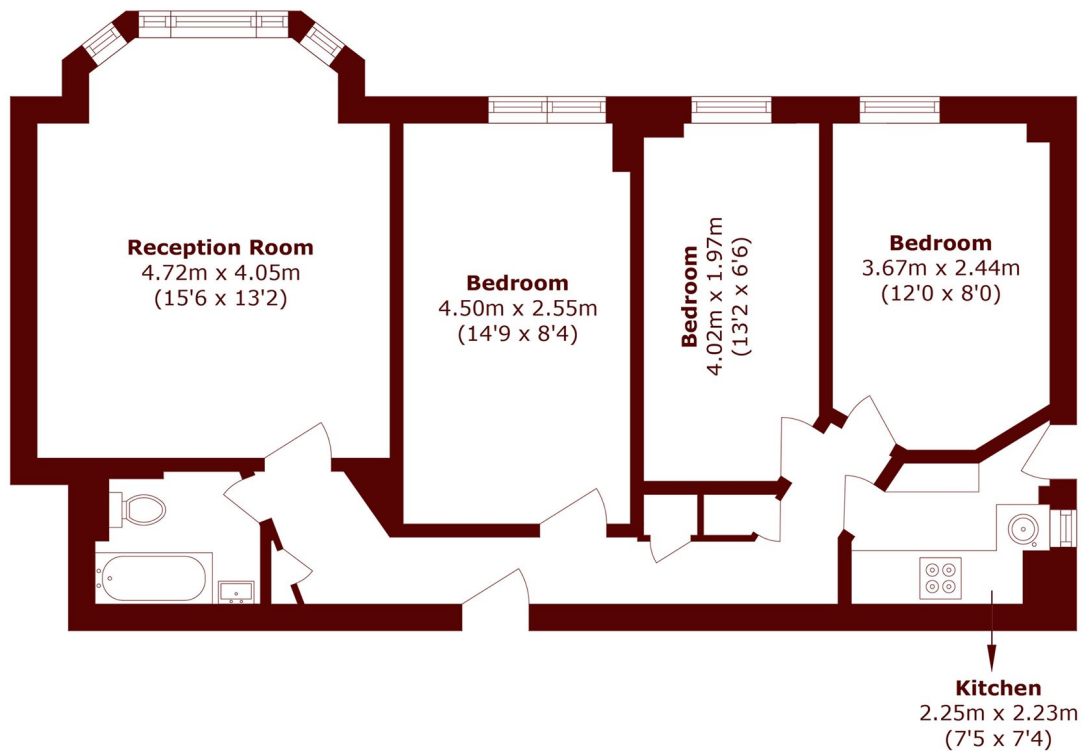
£750 per week (£3,250 per month)

Spacious and well-maintained three double bedroom apartment set within this highly sought-after portered building on Queensway.

Three bedrooms
Wooden floors
Well presented

Lift access
Concierge
Moments from Hyde park

STEP INSIDE QUEENSWAY



Third Floor

Total area (approx.): 64.2 sq. m (691.0 sq. ft)

Notting Hill
020 7313 6910

Energy Rating: D We aim to make our particulars both accurate and reliable. However, they are not guaranteed; nor do they form part of an offer or contract. If you require clarification on any points then please contact us, especially if you're traveling some distance to view. Please note that appliances and heating systems have not been tested and therefore no warranties can be given as to their good working order

MARSH &
PARSONS